



CARLISLE MANSION, WESTMINSTER

5 BEDROOM APARTMENT
PRICE: £4,000,000



HOME FEATURES

SIZE

2,727 sq.ft.

BEDROOMS

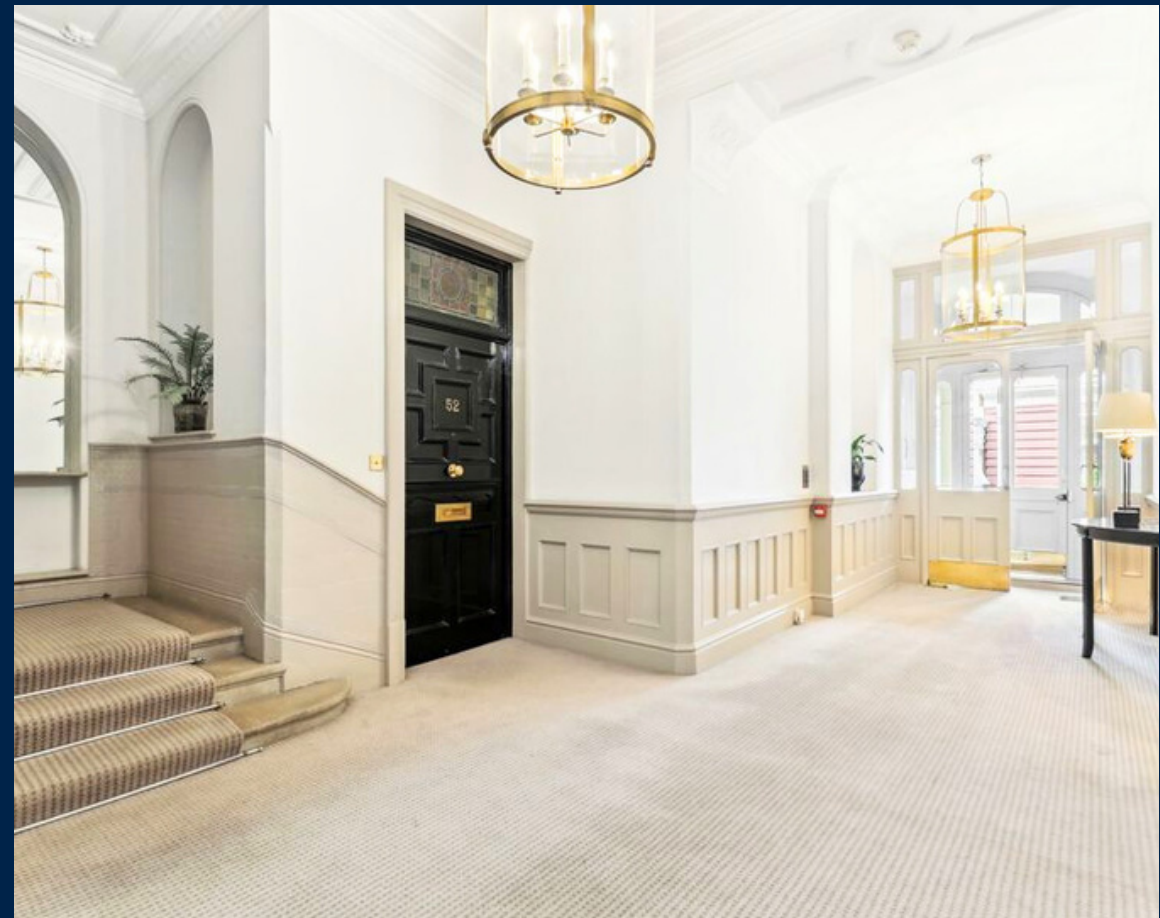
5

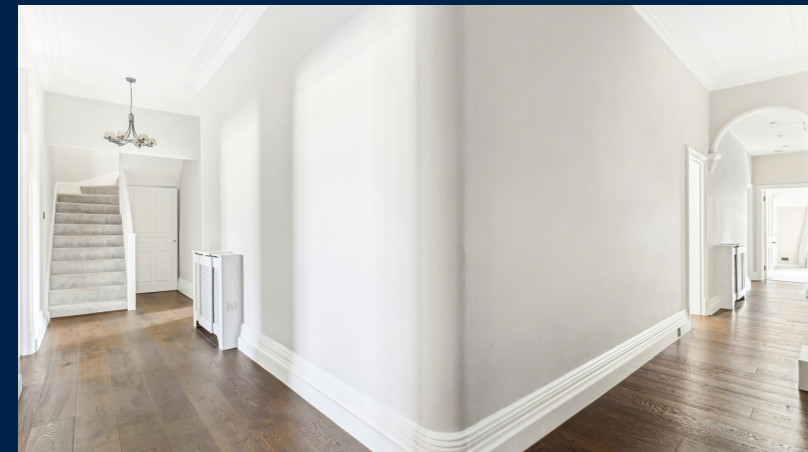
BATHROOMS

6

EPC

E





This magnificent penthouse apartment sits inside a traditional red brick, Victorian mansion block of Carlisle Mansions, situated within the Westminster Cathedral Conservation Area.

This five bedroom duplex is set over the fourth and the fifth floors of the building and is spread over 2,727 sq ft of space. A double reception features nice big windows allowing a lot of natural light into the property, and the kitchen is spacious and full fitted. There are three bedrooms on the lower level and two on the upper level, all with en-suite bathrooms. There is further storage space on the top level as well.

Natural wood flooring has been used throughout and there is excellent natural light throughout the property. Carlisle Mansions is a prestigious mansion building and Carlisle Place is an important residential road in the heart of Westminster, close to Victoria and St James's Park. The property is close to several shopping and restaurant offerings. It is a few minutes away from Victoria station which offers the District and Circle Lines and the Victoria Station offering rail and coach services out of London.

BEDROOMS

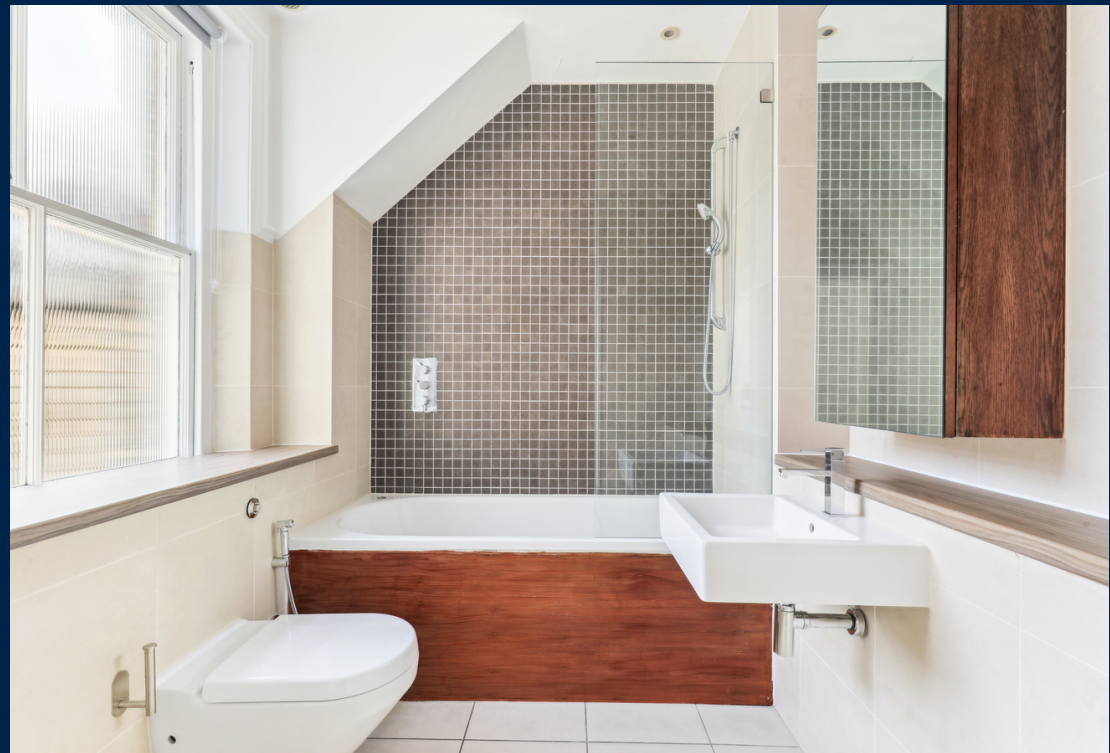
- LARGE WINDOWS
- PLUSH CARPETING
- ALL BEDROOMS EN-SUITE
- BUILT-IN STORAGE
- ELEGANT CHANDELIERS





HIGHLIGHTS

- WOOD FLOORING IN MAIN LIVING AREAS
- FIREPLACE IN LIVING ROOM
- ELEGANT FINISHES
- LOTS OF STORAGE SPACE
- HIGH-QUALITY FINISHES
- PRESTIGIOUS LOCATION
- CLOSE TO SHOPS AND RESTAURANTS



FLOORPLAN



FLOOR 1



FLOOR 2

GROSS INTERNAL AREA
Below Ground: 2088 sq. ft, FLOOR 2: 639 sq. ft
TOTAL: 2727 sq. ft

Measurements are calculated by cubicasa technology. Deemed highly reliable but not guaranteed.





JAISHREE BRICE

SENIOR ASSOCIATE DIRECTOR

Jaishree is a highly motivated, goal-driven real estate professional with global experience. Her focus area is Prime Central London, specifically Mayfair, Marylebone, Belgravia, Knightsbridge and Chelsea. She advises on both investment properties and family homes. Jaishree joined UK Sotheby's International Realty in early 2022 and within the first month closed her first super prime deal. She was a high achieving realtor for more than 11 years in Singapore, working primarily with private clients from the UK, US, and across Asia. This has given her the ability to understand various cultures and work successfully with people of different nationalities. With a Master's Degree in Economics, Jaishree comes from a corporate background and brings strategic thinking, professional discipline and commitment to her real estate work. Jaishree has a great relationship with her clients who value her sincere advice and work with her across borders.

CONTACT INFO

OFFICE: +44 (0) 204 586 7135

EMAIL: JAISHREE.BRICE@SOTHEBYSREALTY.CO.UK

MOBILE: +44 (0) 7389 898 450

WEBSITE: WWW.SOTHEBYSREALTY.CO.UK

United
Kingdom | Sotheby's
INTERNATIONAL REALTY