



Brockley Cross, SE4 | £425,000

02087029999

newhomes@pedderproperty.com

pedder
NEW HOMES

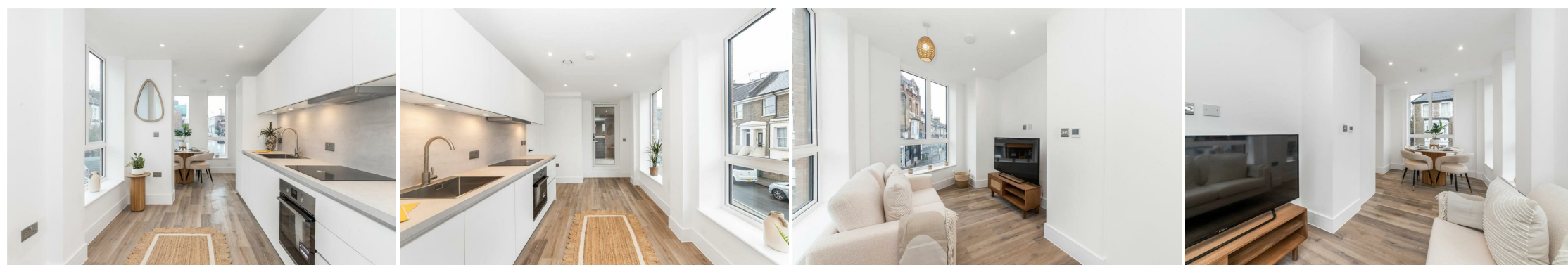


In General

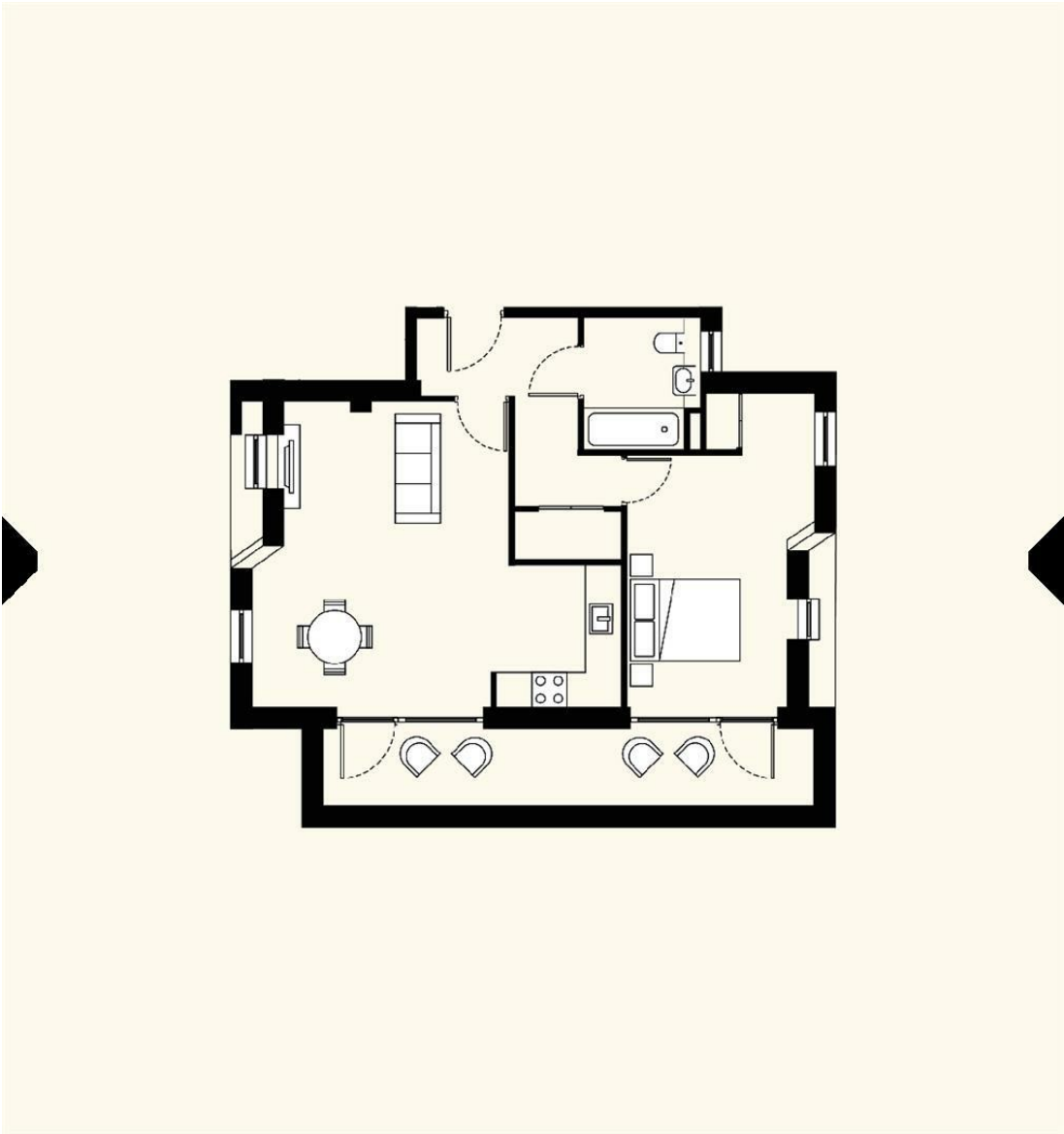
- 1 Bedroom apartment
- 592 SqFt
- Excellent location
- Private terrace
- Close to Brockley station (overground)
- New build development
- High specification
- 10 Year building warranty
- Share of freehold
- Close to shops, restaurants and amenities

In Detail

Brockley Cross is brand new development comprised of seven meticulously crafted one and two bedroom apartments each with private outside space.



Floorplan



Energy Efficiency Rating		
	Current	Potential
Very energy efficient - lower running costs		
102 plus) A		
81-101 B		
69-80 C		
55-68 D		
39-54 E		
21-38 F		
1-20 G		
Not energy efficient - higher running costs		
England & Wales	EU Directive 2002/91/EC	

Pedder Property Ltd trading as Pedder for themselves and for the vendor/landlord of this property whose agents they are, give notice that (1) these particulars do not constitute any part of an offer or contract, (2) all statements contained within these particulars are made without responsibility on the part of Pedder or the vendor/landlord, (3) whilst made in good faith, none of the statements contained within these particulars are to be relied upon as a statement of representation or fact, (4) any intending purchaser/tenant must satisfy him/herself by inspection or otherwise as to the correctness of each of the statements contained within these particulars, (5) the vendor/landlord does not make or give either Pedder or any person in their employment any authority to make or give representation or warranty whatsoever in relation to this property.