



Honor Oak Park, SE23 | £675,000

02087029999

[newhomes@pedderproperty.com](mailto:newhomes@pedderproperty.com)

**pedder**  
NEW HOMES





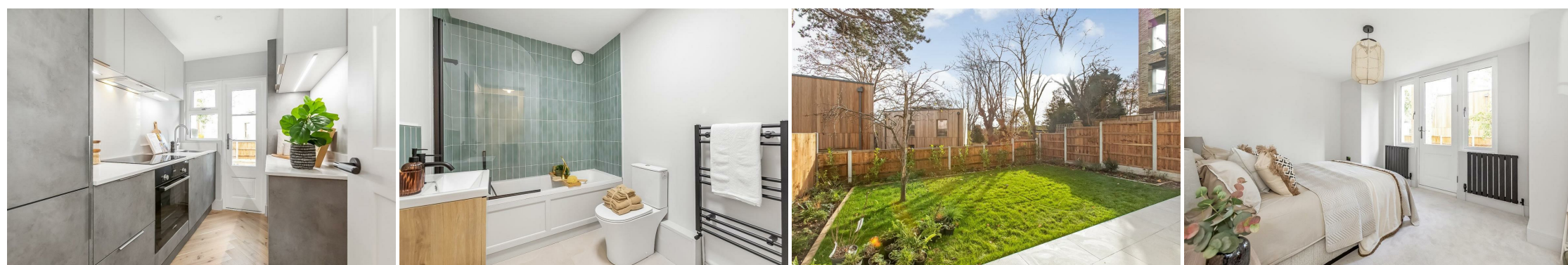


# In General

- Restored Mansion House
- Timer Sash Windows
- Quartz Worktops
- Herringbone Flooring
- Private Garden
- Secure Cycle Storage
- Share of Freehold
- Bosch Appliances
- Close to Overground Station (Honor Oak)
- Opposite One Tree Hill

# In Detail

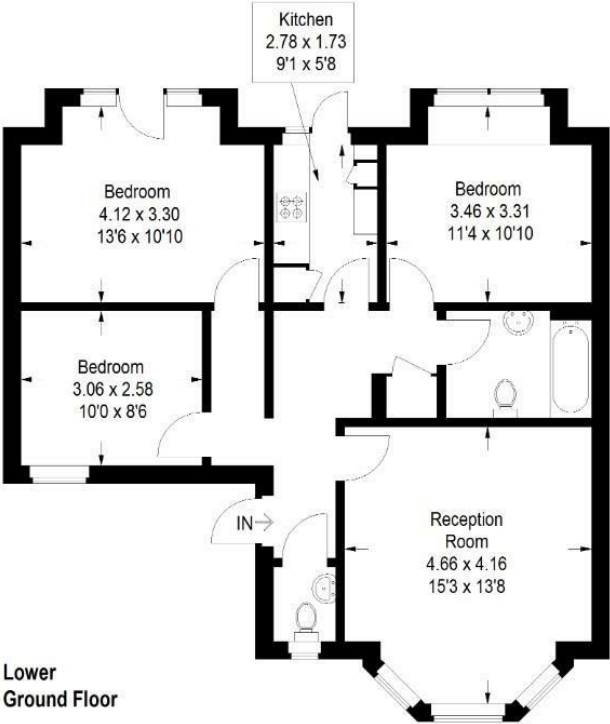
**\*\*Showhome available to view now\*\*** Evergreen Place is a restored Mansion House containing nine brand new apartments in the heart of Honor Oak.



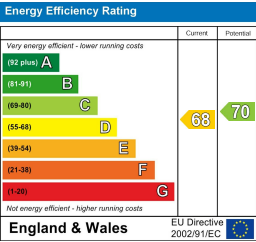
# Floorplan

Evergreen Place, SE23

Approximate Gross Internal Area  
73.7 sq m / 793 sq ft



Copyright www.pedderproperty.com © 2025  
These plans are for representation purposes only as defined by RICS - Code of Measuring Practice. Not drawn to Scale. Windows and door openings are approximate. Please check all dimensions, shapes and compass bearings before making any decisions reliant upon them.



Pedder Property Ltd trading as Pedder for themselves and for the vendor/landlord of this property whose agents they are, give notice that (1) these particulars do not constitute any part of an offer or contract, (2) all statements contained within these particulars are made without responsibility on the part of Pedder or the vendor/landlord, (3) whilst made in good faith, none of the statements contained within these particulars are to be relied upon as a statement of representation or fact, (4) any intending purchaser/tenant must satisfy him/herself by inspection or otherwise as to the correctness of each of the statements contained within these particulars, (5) the vendor/landlord does not make or give either Pedder or any person in their employment any authority to make or give representation or warranty whatsoever in relation to this property.