



Upland Road, SE22 | £1,300,000

02087029999

newhomes@pedderproperty.com

pedder
NEW HOMES

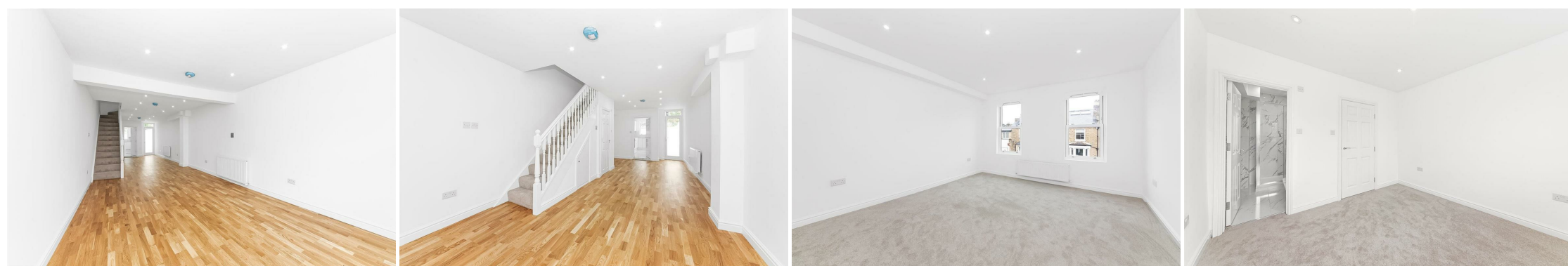


In General

- Renovated four bedroom house
- Private Garden
- Over 1000 sqft
- Two en-suites
- Close to Dulwich village and Lordship lane
- Large open plan reception room

In Detail

A beautifully renovated Victorian four-bedroom home in one of East Dulwich's most desirable locations.



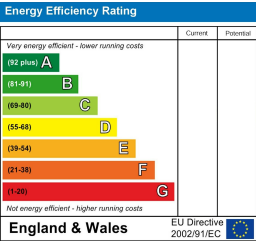
Floorplan

Upland Road, SE22

Approximate Gross Internal Area
126.9 sq m / 1366 sq ft



Copyright www.pedderproperty.com © 2025
These plans are for representation purposes only as defined by
RICS - Code of Measuring Practice. Not drawn to Scale. Windows
and door openings are approximate. Please check all dimensions,
shapes and compass bearings before making any decisions
reliant upon them.



Pedder Property Ltd trading as Pedder for themselves and for the vendor/landlord of this property whose agents they are, give notice that (1) these particulars do not constitute any part of an offer or contract, (2) all statements contained within these particulars are made without responsibility on the part of Pedder or the vendor/landlord, (3) whilst made in good faith, none of the statements contained within these particulars are to be relied upon as a statement of representation or fact, (4) any intending purchaser/tenant must satisfy him/herself by inspection or otherwise as to the correctness of each of the statements contained within these particulars, (5) the vendor/landlord does not make or give either Pedder or any person in their employment any authority to make or give representation or warranty whatsoever in relation to this property.