



Taymount Mansion, SE23 | £575,000

02087029999

newhomes@pedderproperty.com

pedder
NEW HOMES

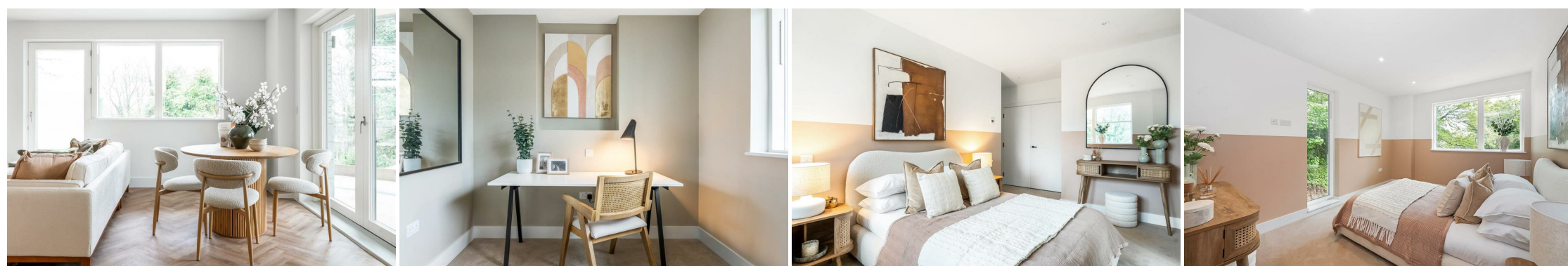


In General

- New build development
- Landscaped roof terrace
- Pronorm German kitchens
- Smeg appliances
- Stunning views of central London
- 10 Year building warranty
- Underfloor heating
- 999 Year lease
- Overground line
- Secure cycle storage

In Detail

A stunning collection of sixteen one, two, and three bedroom apartments. *50% Sold - Show Home available to view now!*



Floorplan



Energy Efficiency Rating		
	Current	Potential
Very energy efficient - lower running costs		
102 plus) A		
(81-91) B		
(69-80) C		
(55-68) D		
(39-54) E		
(21-38) F		
(1-20) G		
Not energy efficient - higher running costs		
England & Wales	EU Directive 2002/91/EC	

Pedder Property Ltd trading as Pedder for themselves and for the vendor/landlord of this property whose agents they are, give notice that (1) these particulars do not constitute any part of an offer or contract, (2) all statements contained within these particulars are made without responsibility on the part of Pedder or the vendor/landlord, (3) whilst made in good faith, none of the statements contained within these particulars are to be relied upon as a statement of representation or fact, (4) any intending purchaser/tenant must satisfy him/herself by inspection or otherwise as to the correctness of each of the statements contained within these particulars, (5) the vendor/landlord does not make or give either Pedder or any person in their employment any authority to make or give representation or warranty whatsoever in relation to this property.