



3 Old Highway, Hoddesdon, Herts, EN11 0LS

£1,550 PCM

- Period Features
- Fitted Bathroom
- Gas Central Heating
- Excellent condition
- Fitted Kitchen
- Two Double Bedrooms
- Walking distance TO RYE HOUSE station
- Long term rental available



# 3 Old Highway, Herts EN11 0LS

\*\*\*Another BRANDNEW listing from the WF/AD PROPERTY GROUP\*\*\*

A delightful 2 double bedroom cottage located close to Rye House BR Station, the property is offered unfurnished, gas central heating, rear garden, on street parking, double glazing, very good condition throughout. Available long term rental.

Situated nearby to RYE HOUSE Station ( London Liverpool Street 30 minutes ) Northumberland Park 15 minutes to watch the Mighty Spurs

NEWLY DECORATED  
NEW CARPETS AND FLOORING

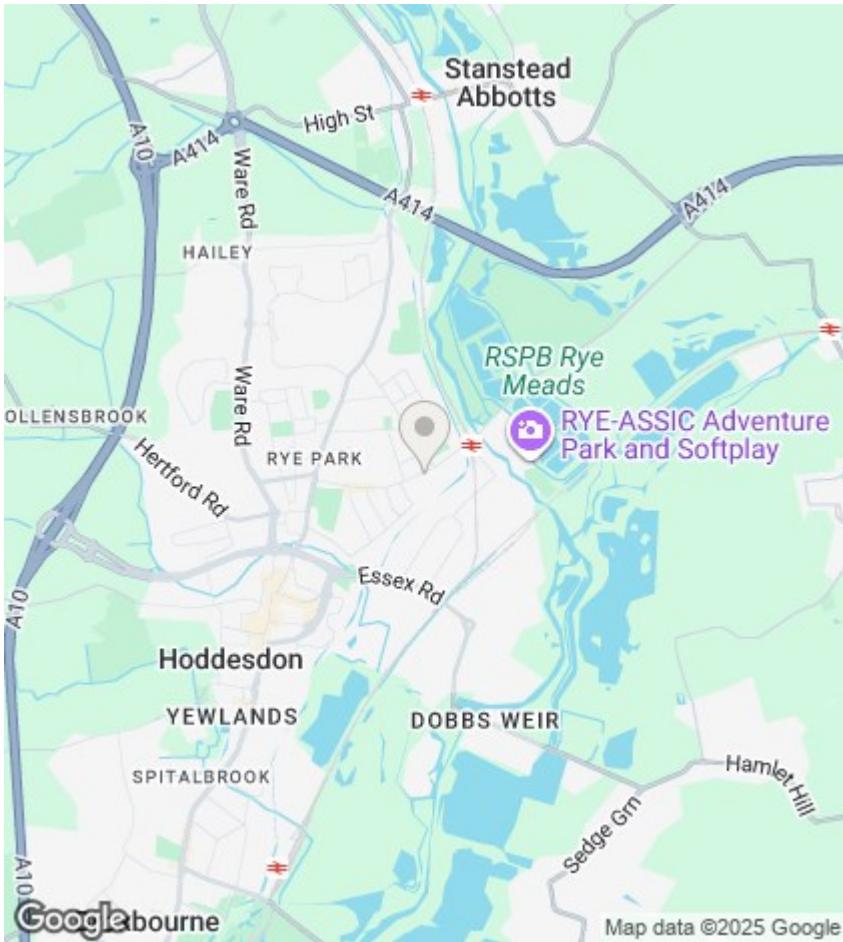
Porchway Entrance to :



Council Tax Band: C







## Directions

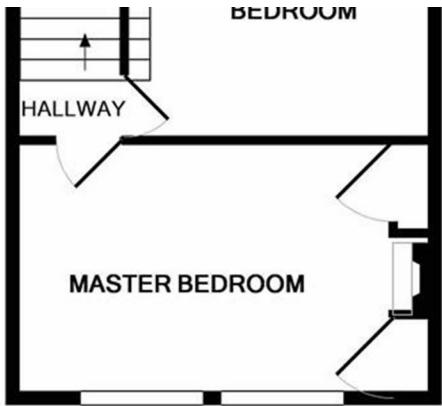
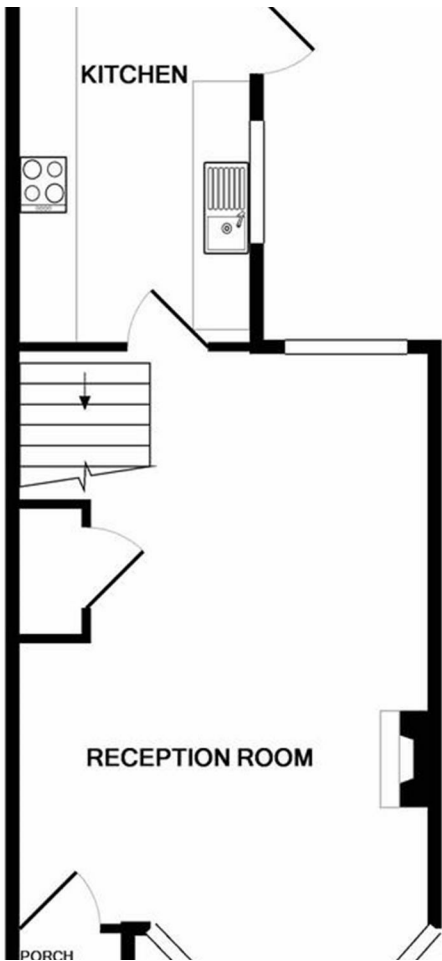
## Viewings

Viewings by arrangement only. Call 01992 470335 to make an appointment.

## EPC Rating:

D

Energy Efficiency Rating		
	Current	Potential
Very energy efficient - lower running costs		
(92 plus) <b>A</b>		
(81-91) <b>B</b>		83
(69-80) <b>C</b>		
(55-68) <b>D</b>	55	
(39-54) <b>E</b>		
(21-38) <b>F</b>		
(1-20) <b>G</b>		
Not energy efficient - higher running costs		
England & Wales	EU Directive 2002/91/EC	



1ST FLOOR

Whilst every attempt has been made to ensure the accuracy of the floor plan contained here, measurements of doors, windows, rooms and any other items are approximate and no responsibility is taken for any error, omission, or mis-statement. This plan is for illustrative purposes only and should be used as such by any prospective purchaser. The services, systems and appliances shown have not been tested and no guarantee as to their operability or efficiency can be given  
Made with Metropix ©2017