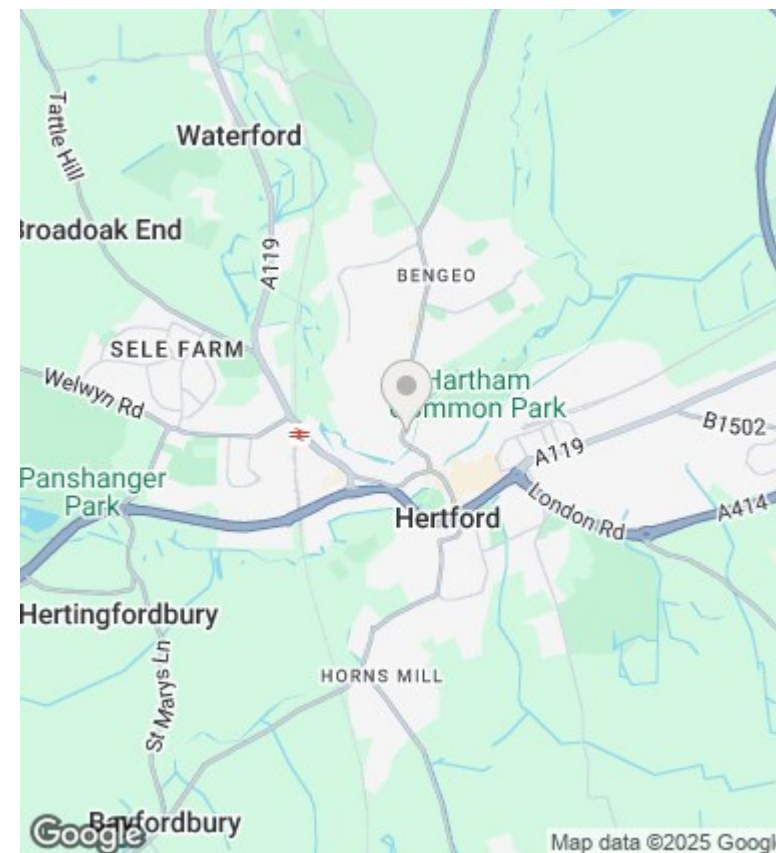
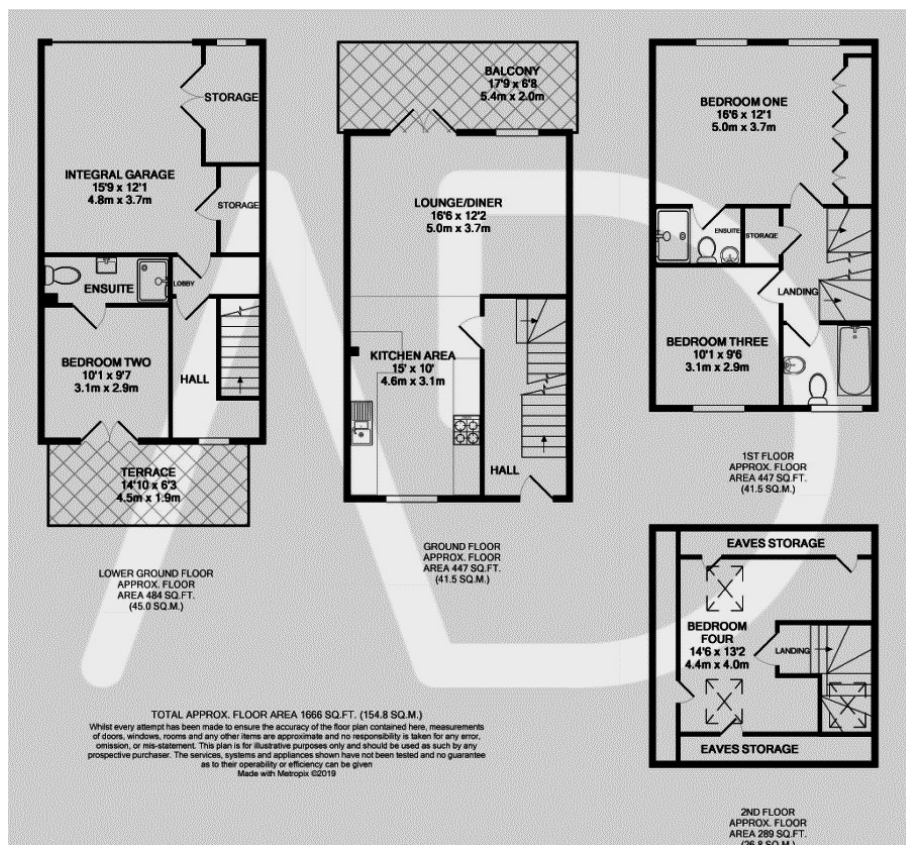




1 Youngs Mews, Port Hill, Hertford, SG14 1QT

£2,500 PCM

- Four Bedroom Town House
- Luxury Kitchen with appliances
- Large Balcony
- Excellent Location
- Two Ensuities and Bathroom
- Garage and Off Street Parking
- Hertford Town Centre
- Close to Station and Shops



Directions

Viewings

Viewings by arrangement only. Call 01992 470335 to make an appointment.

Council Tax Band

EPC Rating:

C

Energy Efficiency Rating		
	Current	Potential
Very energy efficient - lower running costs		
(92 plus) A		
(81-91) B		85
(69-80) C	72	
(55-68) D		
(39-54) E		
(21-38) F		
(1-20) G		
Not energy efficient - higher running costs		
England & Wales	EU Directive 2002/91/EC	