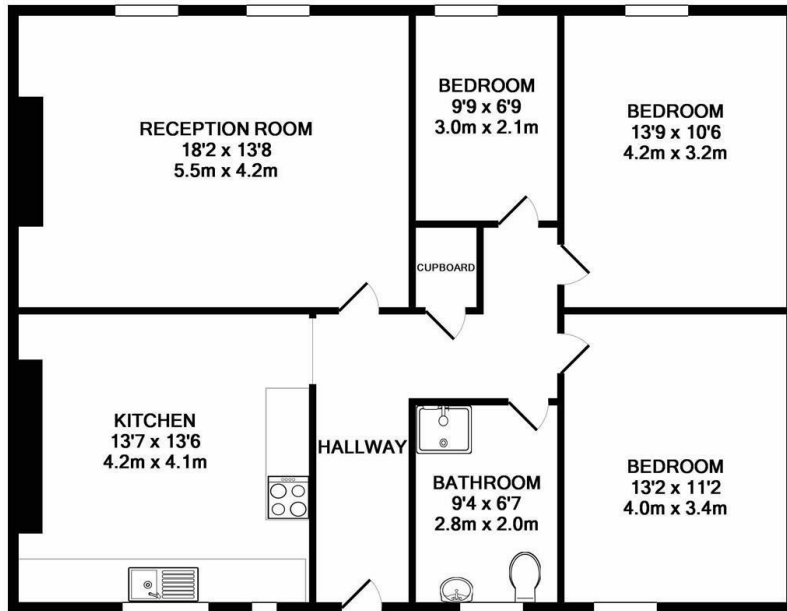




2nd floor flat, 91-93 Fore Street, Hertford, SG14 1AS

£1,100 PCM

- THREE BEDROOMS
- SPACIOUS KITCHEN / DINER
- LONG TERM RENTAL
- TOP FLOOR
- LARGE LIVING ROOM
- CLOSE TO HERTFORD EAST
- TOWN CENTRE APARTMENT
- SMALL BALCONY
- NO PARKING



TOTAL APPROX. FLOOR AREA 942 SQ.FT. (87.5 SQ.M.)
 Whilst every attempt has been made to ensure the accuracy of the floor plan contained here, measurements of doors, windows, rooms and any other items are approximate and no responsibility is taken for any error, omission, or mis-statement. This plan is for illustrative purposes only and should be used as such by any prospective purchaser. The services, systems and appliances shown have not been tested and no guarantee as to their operability or efficiency can be given
 Made with Metropix ©2017



Directions

Viewings

Viewings by arrangement only. Call 01992 470335 to make an appointment.

Council Tax Band

EPC Rating:

E

| Energy Efficiency Rating | | Current | Potential |
|---|--|-------------------------|-----------|
| Very energy efficient - lower running costs | | | |
| (92 plus) A | | | |
| (81-91) B | | | 73 |
| (69-80) C | | | |
| (55-68) D | | 50 | |
| (39-54) E | | | |
| (21-38) F | | | |
| (1-20) G | | | |
| Not energy efficient - higher running costs | | | |
| England & Wales | | EU Directive 2002/91/EC | |