



ANTHONY
DAVIES



- **Extended Three Bedroom House**
- **Immaculately Presented**
- **Sought after Road**
- **Stunning White Gloss Kitchen/Breakfast**

Elmbridge, Harlow, CM17 0JX

£495,000

A truly immaculate and extended three bedroom end of terrace family home nicely positioned in this sought after road just off of Churchgate Street. Accommodation boasting a stunning white gloss high quality kitchen/breakfast room, living room, separate dining room, downstairs cloakroom, two double bedrooms with further single room and family bathroom. Beautifully kept secluded rear garden with side access, storage cupboards and direct access into the garage.

Room Measurements

ENTRANCE DOOR TO: -

ENTRANCE HALLWAY

LIVING ROOM

14' 2" x 12' 2" (4.32m x 3.71m)

KITCHEN/BREAKFAST ROOM

17' 10" x 13' 11" (5.44m x 4.24m)

DINING ROOM

17' 10" x 10' 9" (5.44m x 3.28m)

DOWNSTAIRS CLOAKROOM

FIRST FLOOR LANDING

BEDROOM ONE

12' 4" x 11' 6" (3.76m x 3.51m)

BEDROOM TWO

11' 11" x 11' 6" (3.63m x 3.51m)

BEDROOM THREE

9' 7" x 6' 9" (2.92m x 2.06m)

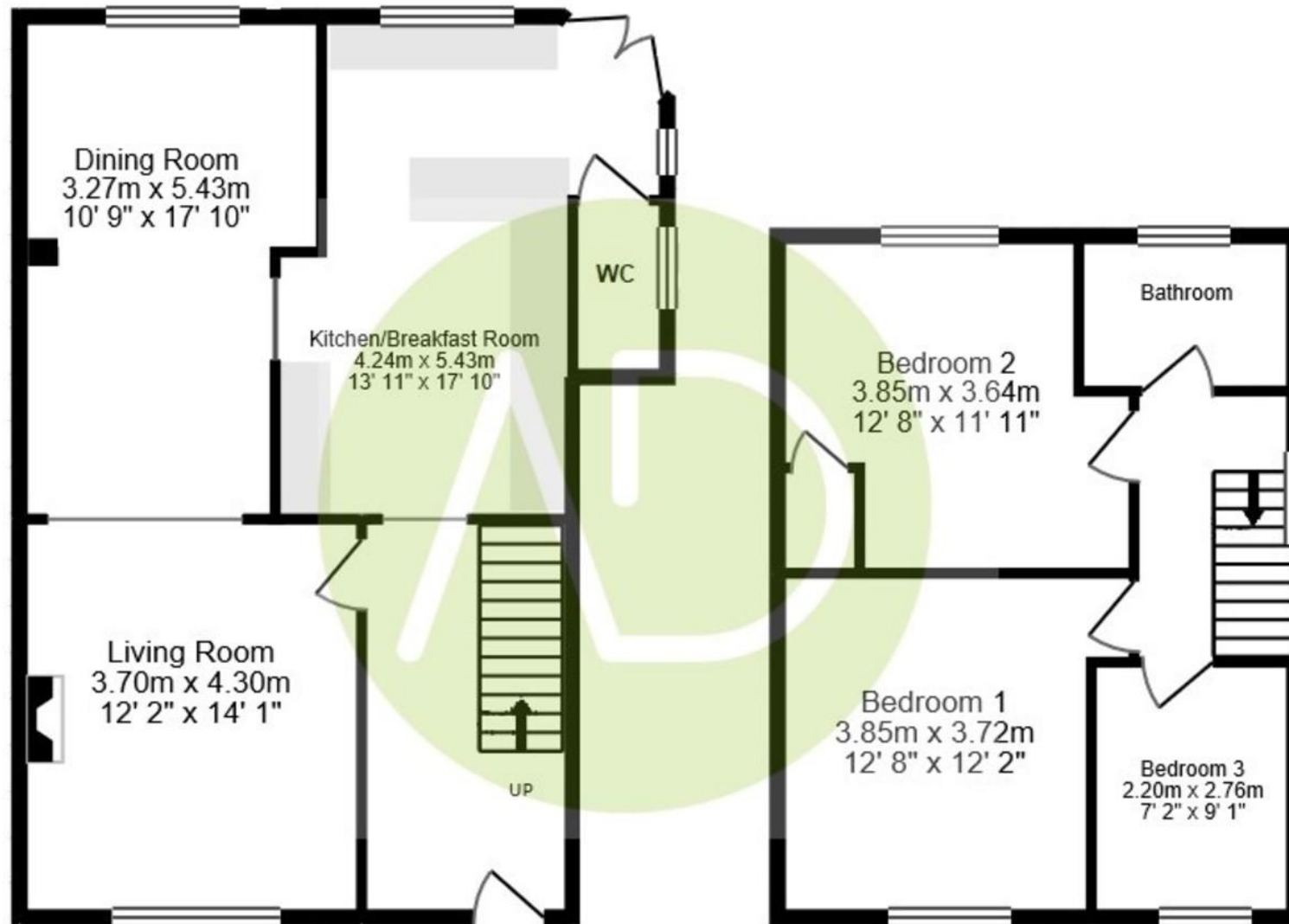
FAMILY BATHROOM

BEAUTIFUL REAR GARDEN

GARAGE







Whilst every attempt has been made to ensure the accuracy of the floor plan contained here, measurements of doors, windows, rooms and any other items are approximate and no responsibility is taken for any error, omission, or mis-statement. This plan is for illustrative purposes only and should be used as such by any prospective purchaser. The services, systems and appliances shown have not been tested and no guarantee as to their operability or efficiency can be given

27A High Street,
Hoddesdon, Hertfordshire,
EN11 8SX

www.anthony-davies.com
01992 470335
admin@anthony-davies.com

Agents Note: Whilst every care has been taken to prepare these sales particulars, they are for guidance purposes only. All measurements are approximate and for general guidance purposes only and whilst every care has been taken to ensure their accuracy, they should not be relied upon and potential buyers are advised to recheck the measurements