

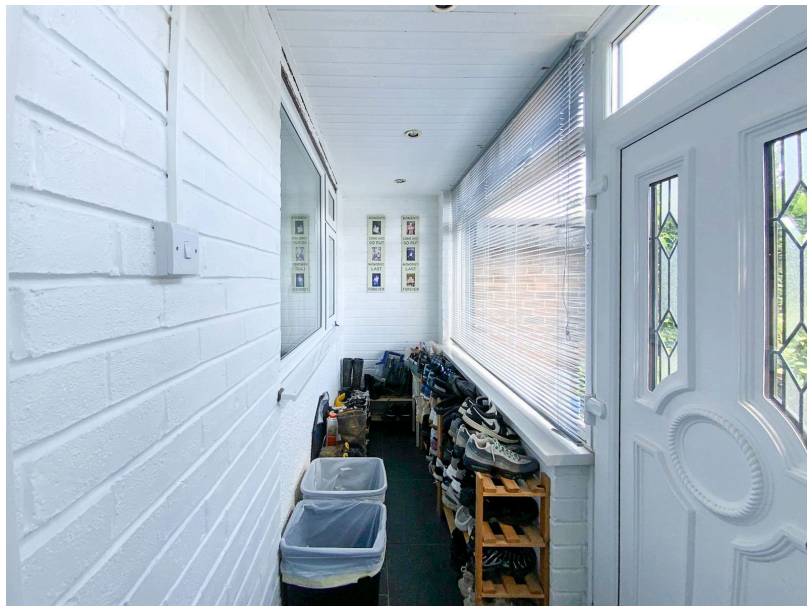


COUNTRY
HOLMES

Roundhill Close, Hadfield, Glossop, SK13 2BH

£355,000

🛏 3 🚿 1 🛋 2



- Three Bedroom Semi Detached Property
- Two Reception Rooms
- Garden Room
- Private Rear Garden
- Triple Car Driveway & Integral Garage
- Cul-de-Sac Position
- Well Presented Throughout



Country Holmes are delighted to offer this beautifully maintained three-bedroom semi-detached home, ideally positioned in a quiet cul-de-sac within the highly desirable village of Hadfield. Offering spacious living throughout, including a modern kitchen/diner, conservatory, and three well-proportioned bedrooms, this property is perfect for growing families. With a generous driveway, integral garage, enclosed rear garden, and easy access to local amenities, scenic trails, and direct rail links to Manchester, this is a fantastic opportunity to secure a quality home in a sought-after location.



Score	Energy rating	Current	Potential
92+	A		
81-91	B		
69-80	C		76 C
55-68	D	61 D	
39-54	E		
21-38	F		
1-20	G		