



Glossop Road, Marple Bridge

£950,000

COUNTRY
HOLMES

Glossop Road, Marple Bridge

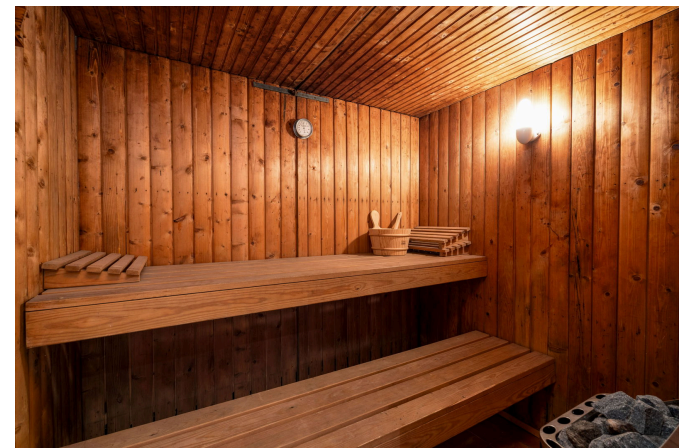
Country Homes are pleased to present this charming and versatile three/four-bedroom detached bungalow, thoughtfully arranged over three floors and enjoying an enviable elevated position with far-reaching panoramic views. This delightful property offers flexible living space, including two separate reception rooms, a well-appointed three-piece family bathroom, and a private en suite to the principal bedroom.

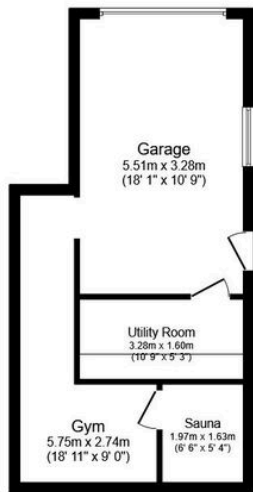
Additional features include a useful utility area, a home gym, and a relaxing sauna — perfect for those who value comfort and wellness. Outside, the property benefits from ample off-road parking, a garage, and beautifully landscaped gardens to both the front and rear, offering a peaceful and picturesque setting to enjoy throughout the seasons.

This is a wonderful opportunity to acquire a unique home in a desirable location, ideal for families or those looking for a little extra space in a tranquil environment.



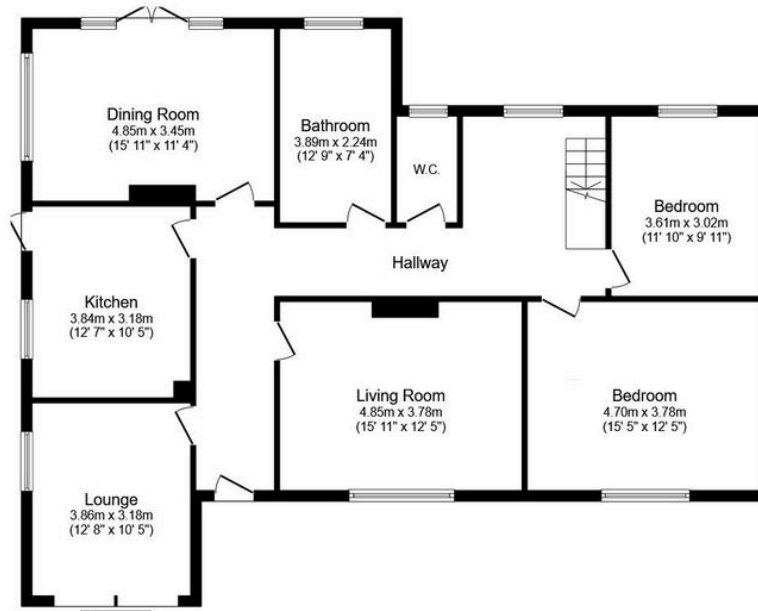






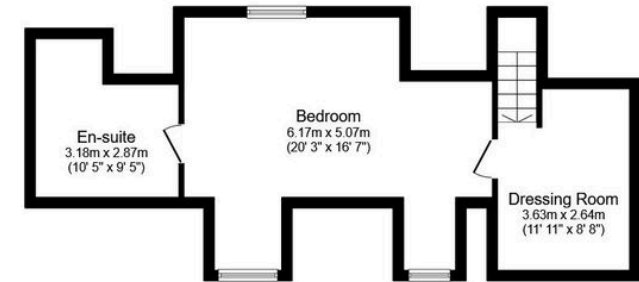
Basement

Floor area 37.3 sq.m.
(401 sq.ft.)



Ground Floor

Floor area 128.7 sq.m. (1,385 sq.ft.)



First Floor

Floor area 42.3 sq.m. (455 sq.ft.)

Total floor area: 208.2 sq.m. (2,241 sq.ft.)

This floor plan is for illustrative purposes only. It is not drawn to scale. Any measurements, floor areas (including any total floor area), openings and orientations are approximate. No details are guaranteed, they cannot be relied upon for any purpose and do not form any part of any agreement. No liability is taken for any error, omission or misstatement. A party must rely upon its own inspection(s). Powered by www.Propertybox.io