



COUNTRY
HOLMES

The Stocks, Tintwistle

£365,000

3 2



Charming and full of character, this beautifully presented detached cottage offers THREE bedrooms plus an ATTIC ROOM, spread over FOUR spacious floors. With features like exposed beams, stone floors, and Mullion windows, it blends classic charm with modern comfort.

Tucked in the heart of a sought-after village, enjoy peaceful surroundings, countryside walks, private parking, and a lovely two-tier garden—perfect for relaxing or entertaining.

A rare chance to own a unique and inviting home in an exceptional location.



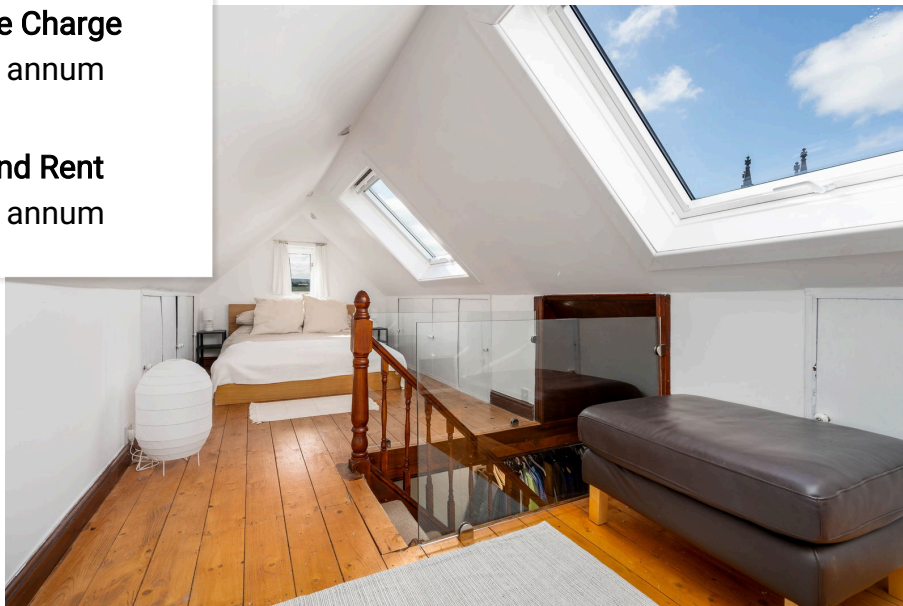


Floor Area
sq. ft.

Tenure
Leasehold

Service Charge
£ per annum

Ground Rent
£ per annum



Matterport Property Report

8 The Stocks

Gross Floor Area - Full Property 1,398 sq. ft. | Floor 1 391 sq. ft.

Sizes and dimensions are approximate, actual may vary

Visit 3D space on
Matterport



Energy Efficiency Rating

	Current	Potential
Very energy efficient - lower running costs		
(92 plus) A		
(81-91) B		82
(69-80) C	72	
(55-68) D		
(39-54) E		
(21-38) F		
(1-20) G		
Not energy efficient - higher running costs		
England & Wales	EU Directive 2002/91/EC	

01457 761310 | glossop@countryholmes.co.uk | www.countryholmes.co.uk
18 High Street West, Glossop, Derbyshire, SK13 8BH