



COUNTRY  
HOLMES



Hague Street, Glossop, SK14 8NS

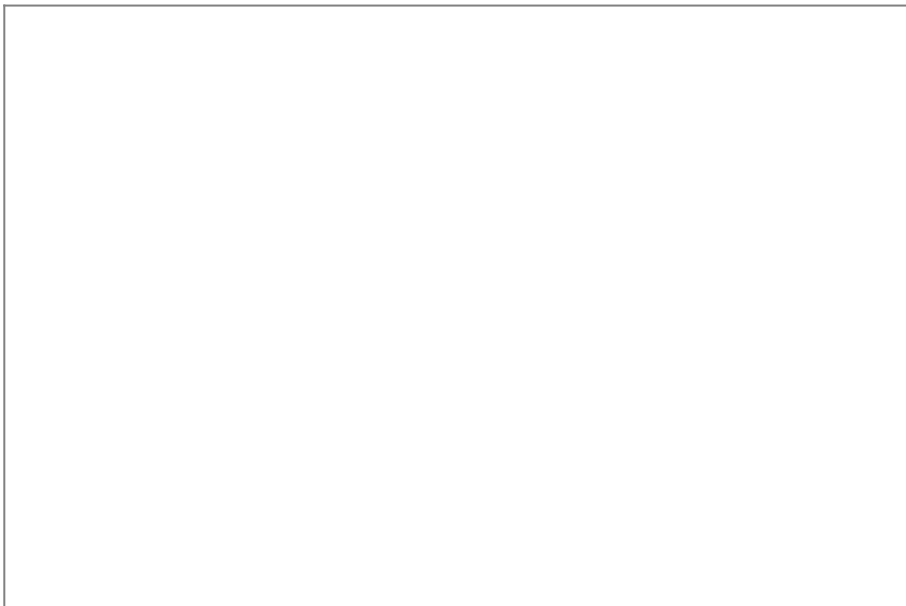
£375,000

3 1 2

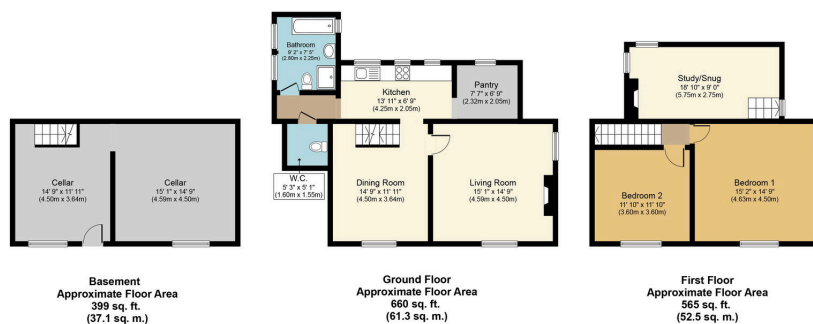


- Three bedrooms
- Sought after location
- Grade II listed
- Freehold
- Character & period charm throughout
- No onward chain
- Council tax band E
- On-street parking





A fabulous period property in need of refurbishment with enormous potential both inside and out. Formerly two weavers cottages dating back to 1815, the two buildings have since been combined into a single dwelling under the tenure of qualified architect Edwin Phillip Andrew, from 1959 to the present day.



Whilst every attempt has been made to ensure the accuracy of the floor plan contained here, measurements of doors, windows, rooms and any other items are approximate and no responsibility is taken for any error, omission, or mis-statement. The measurements should not be relied upon for valuation, transaction and/or funding purposes. This plan is for illustrative purposes only and should be used as such by any prospective purchaser or tenant. The services, systems and appliances shown have not been tested and no guarantee as to their operability or efficiency can be given.  
Copyright V360 Ltd 2024 | www.houseviz.com

01457 761310 | glossop@countryholmes.co.uk | www.countryholmes.co.uk  
18 High Street West, Glossop, Derbyshire, SK13 8BH