



Slatelands Road, Glossop, SK13 6LH

£265,000

COUNTRY  
HOLMES



## Slatelands Road, Glossop, SK13 6LH

An excellent renovation project of which is mainly cosmetic is this THREE BEDROOM property and subject to planning and the relevant consents could be extended to create a fabulous family home. In brief the property comprises; entrance hallway leading to the Lounge, dining room and kitchen. Stairs lead up to the first floor where there are three good size bedrooms and a large family bathroom







## Agent Remarks

An excellent renovation project of which is mainly cosmetic is this THREE BEDROOM property and subject to planning and the relevant consents could be extended to create a fabulous family home. In brief the property comprises; entrance hallway leading to the Lounge, dining room and kitchen. Stairs lead up to the first floor where there are three good size bedrooms and a large family bathroom. There are stairs to the loft which could easily be converted with the appropriate building regulations. The property has a detached garage and drive. To the front is a stone-paved area leading to the front door. The rear garden is flagged but has raised beds and looks over local woodland.

## 3D Interactive Doll House Tour Instruction For Use

To use the tour please click the ARROW in the pictures section on Rightmove. You can have a guided tour, just click Play and stop anytime for a browse around, you can restart by re-clicking play again to continue the tour automatically. Click on the Doll House icon to see the 3D model of the house in its entirety or click any room to enter in this mode and walk yourself around.

Press the man icon to walk around at your leisure. Click to view the real-time floorplan this is the actual layout as it is in real-time. You can also view each floor on its own by clicking then the floor number. You can even take measurements by clicking the ruler and then clicking on each of the two points you want to measure. Finally, if you click on the





## Lounge

4.22m x 3.61m (13'10" x 11'10")

A good size lounge with front and side window.

## Dining Room

4.17m x 3.91m (13'8" x 12'10")

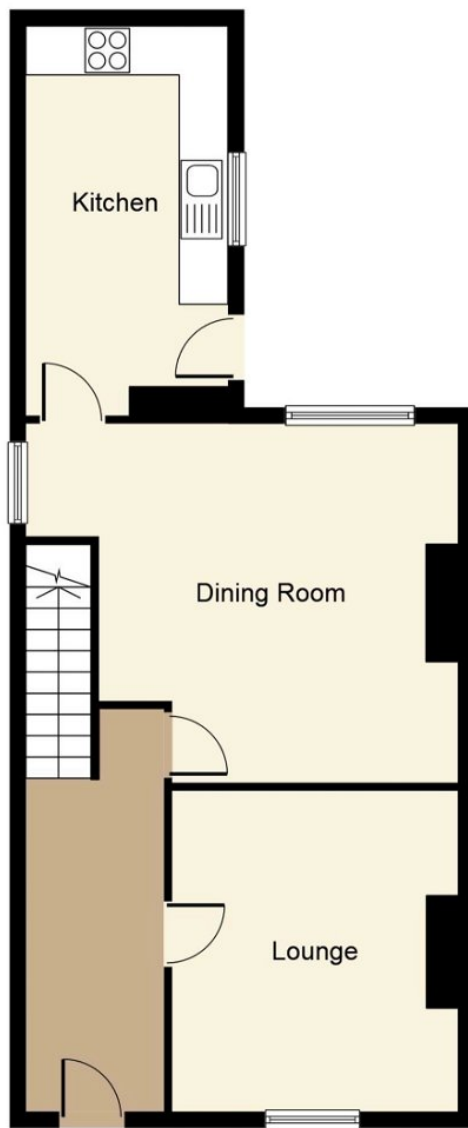
Another good size room with two windows and understairs storage.

## Kitchen

3.58m x 1.65m (11'9" x 5'5")

Range of wall and base units, gas hob with extractor, electric oven space for appliances and wall mounted Worcester boiler, stainless sink and drainer, ceiling spots.





**Ground Floor**



**First Floor**



Whilst every attempt has been made to ensure the accuracy of the floor plan contained here, measurements of doors, windows, rooms and any other items are approximate and no responsibility is taken for any error, omission, or mis-statement. The measurements should not be relied upon for valuation, transaction and/or funding purposes. This plan is for illustrative purposes only and should be used as such by any prospective purchaser or tenant. The services, systems and appliances shown have not been tested and no guarantee as to their operability or efficiency can be given.

Copyright V360 Ltd 2023 | [www.houseviz.com](http://www.houseviz.com)

01457 761310 | [glossop@countryholmes.co.uk](mailto:glossop@countryholmes.co.uk) | [www.countryholmes.co.uk](http://www.countryholmes.co.uk)  
18 High Street West, Glossop, Derbyshire, SK13 8BH