



1 STAIR BRIDGE

STAIR

www.corumproperty.co.uk





3 | BEDROOMS

2 | BATHROOMS

2 | PUBLIC ROOMS

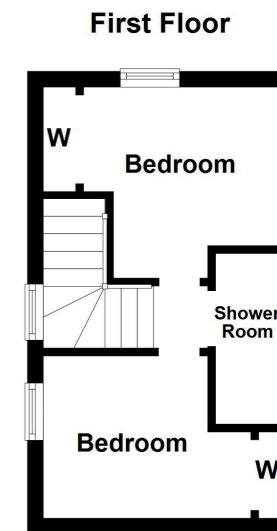
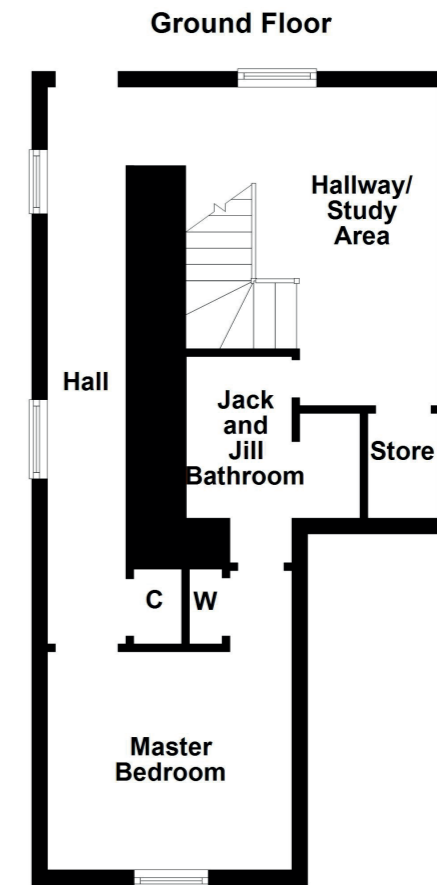
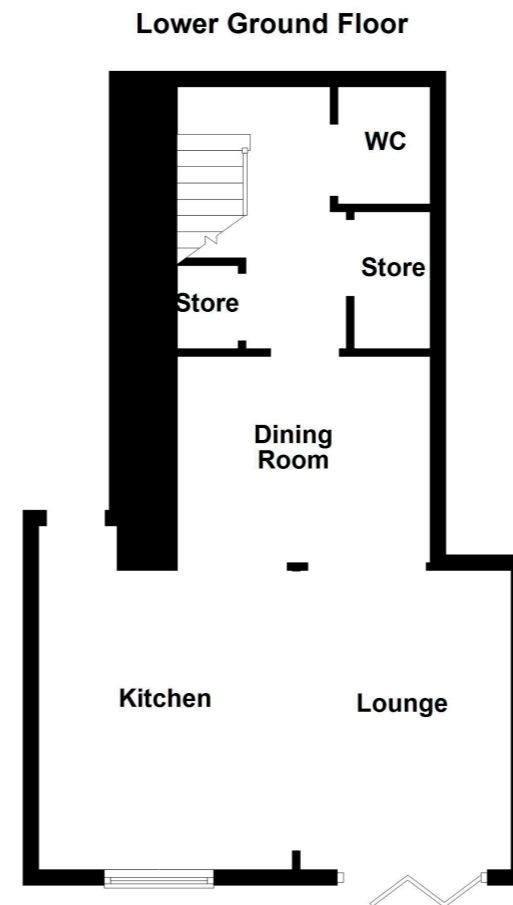
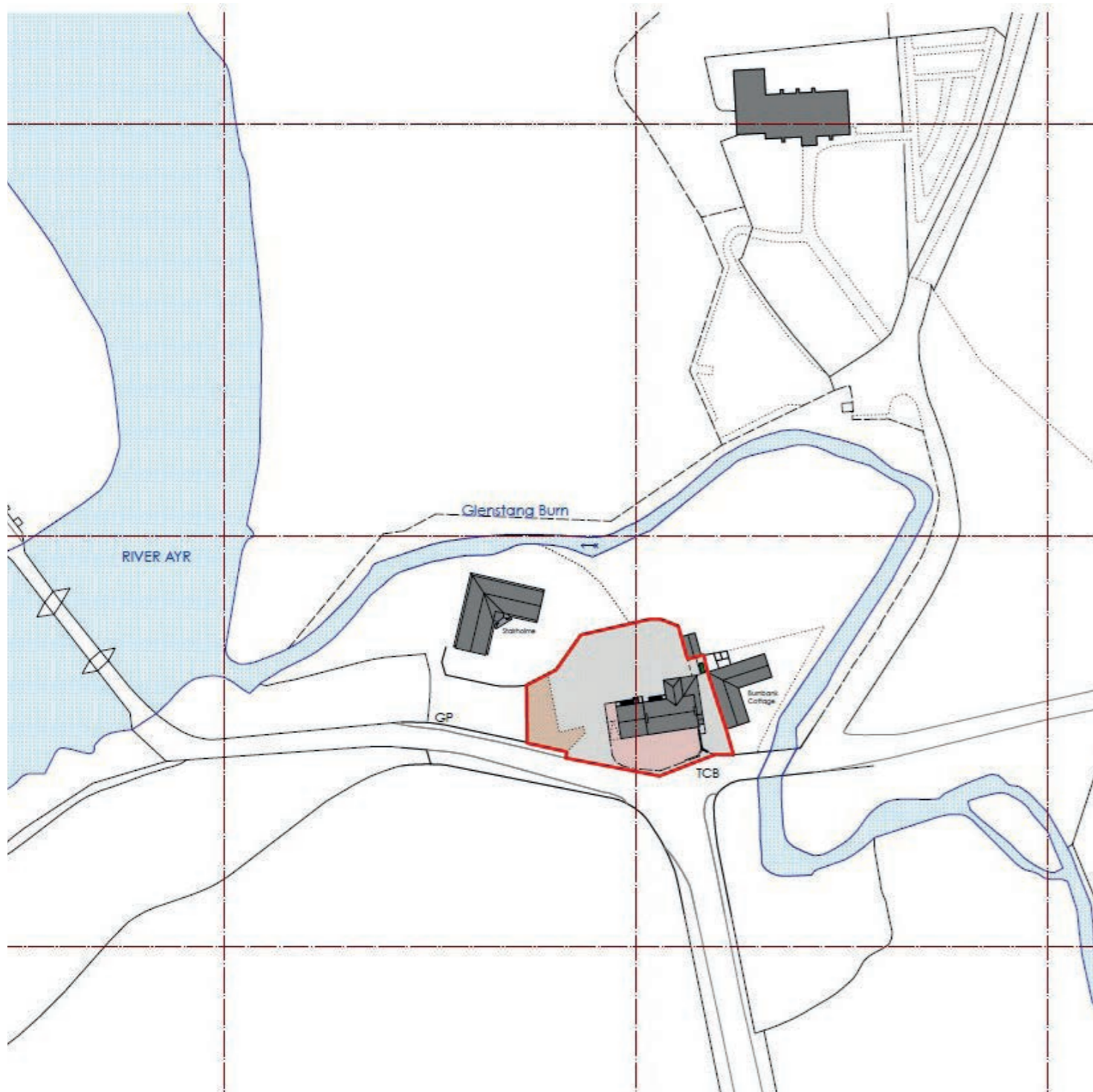
An impressive end terraced family home within an exclusive development of just three luxury homes, created from the former Stain Inn, with off road parking, private garden grounds and an idyllic rural setting on the River Ayr.

Nestled in the delightful parish of Stair, surrounded by rolling Ayrshire countryside and adjacent to the River Ayr, the Stair Inn has been a local landmark for centuries and is located just minutes from the market town of Ayr, the A77/ M77 road network and the seaside town of Prestwick. This magnificent building has now been repurposed and fully refurbished to create three terraced town houses, with private gardens, off road parking at the rear and luxury spacious interior. Number 1 has a preferred position at the end of the terrace which allows for its own private driveway and entrance, with an original stone archway and an incredible amount of living space.

In more detail, the property extends to an entrance hallway on the ground floor with a large hallway/ study area, a luxury bathroom and master bedroom. Stairs lead down to an open plan living area, with an attractive split level feature, bi fold doors out to the garden, a dining room and gorgeous shaker style kitchen finished in a light grey colour, with a WC and two large storage cupboards. There is also a doorway out to the side from this level. On the top floor there is a beautiful shower room and two large double bedrooms. The gardens are enclosed, with a communal parking area to the rear and a private driveway to the side with parking for three to four vehicles.

For further information on the development and for access to the site, please contact our Ayr office where our team will be able to assist with more detailed enquiries.





The property enjoys a lovely semi-rural position close to the the hamlet of Stair, which forms part of the River Ayr valley and is located around 7 miles from Ayr. It is without doubt an area of outstanding natural beauty surrounded by beautiful Ayrshire countryside. The town of Ayr provides a more comprehensive range of amenities including supermarket and retail shopping, transport and recreational facilities.

AY4371 | Sat Nav: 1 Stair Bridge, Stair, KA5 5HW

For the full home report visit www.corumproperty.co.uk

* All measurements and distances are approximate Floorplans are for illustration purposes and may not be to scale.

WE'RE **SOLD** ON
YOUR FUTURE



c o r u m

Corum Ayr
10 Beresford Terrace, Ayr, KA7 2EG

Tel: 01292 880 888

Email: ayr@corumproperty.co.uk

www.corumproperty.co.uk