



WHITECROFT

6 GRANGEMUIR ROAD, PRESTWICK

www.corumproperty.co.uk





- 5 | BEDROOMS
- 3 | BATHROOMS
- 2 | PUBLIC ROOMS

A substantial and immediately impressive detached family home, with generous and flexible accommodation, private gardens and perfectly located within walking distance of Prestwick town centre and the popular seafront.

Whitecroft is set on a large plot on the corner of Grangemuir Road and Midton Road, ideally situated equidistant from the heart of the town and the seafront. Built in 1885, this detached villa has been extended and converted over time to create a fantastic family home, including significant refurbishments by the current owners. The interior has a flexible layout, with an ample amount of modern living space on the ground floor, a downstairs master bedroom suite and four large bedrooms on the upper floor. It is beautifully presented throughout, with neutral decor and luxury fittings, while many of the period features have been sympathetically retained. The garden grounds are generous and also allow for off road parking, with a car port/ garage.

In more detail, the internal accommodation extends to an entrance vestibule, a hallway with under stairs storage and a sweeping staircase leading to the upper floor, an incredible lounge with a feature wood burning stove, dual aspect windows and ample space for dining, an extended dining kitchen, with ample wall and base units, bi-folding doors leading out to the garden and underfloor heating, a separate utility room and a downstairs shower room, also with under floor heating, a family room and a downstairs double bedroom, with French doors out to the garden and an en suite shower room. On the upper floor there is a family bathroom suite, storage off the landing and four large bedrooms, including three double bedrooms.

Externally there are gardens to the front, laid with decorative shrubs and aggregate. There is private, gated access off Midton Road into the rear garden, which is beautifully hard-landscaped, with Indian slate paving, artificial turf and a large driveway that leads to a double car port with garage storage, light and power.





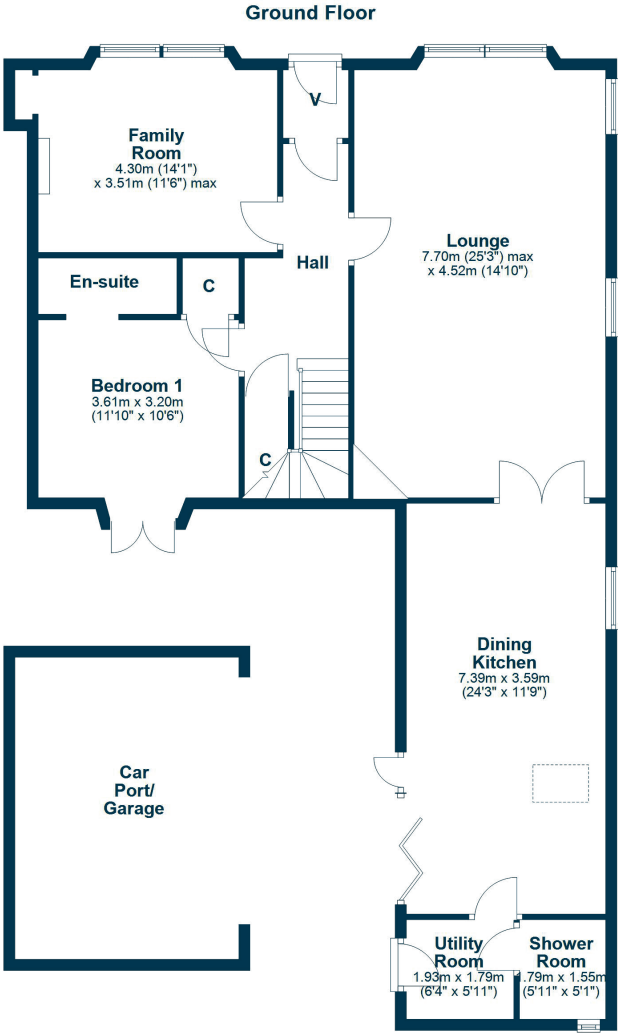












The property is located within close proximity to the bustling town centre of Prestwick, which provides a plethora of boutique shops, bars and restaurants. In addition the seafront/promenade is close by and there are excellent road and rail links to Glasgow and surrounding areas.

AY5283 | Sat Nav: 'Whitecroft' 6 Grangemuir Road, Prestwick, KA9 1PX

For the full home report visit www.corumproperty.co.uk

* All measurements and distances are approximate Floorplans are for illustration purposes and may not be to scale.



WE'RE **SOLD** ON
YOUR FUTURE



Corum Ayr
10 Beresford Terrace, Ayr, KA7 2EG

Tel: 01292 880 888

Email: ayr@corumproperty.co.uk

www.corumproperty.co.uk