



ROSE COTTAGE

21 KIRKOSWALD ROAD, MAIDENS

www.corumproperty.co.uk





2 | BEDROOMS

1 | BATHROOMS

1 | PUBLIC ROOMS

A truly spacious traditional cottage situated on a generous plot in the beautiful fishing village of Maidens, with spectacular sea views from the rear and flexible accommodation.

Kirkoswald Road runs from the north directly into the coastal village of Maidens and is comprised of predominantly traditional homes with a charming and attractive frontage. 'Rose Cottage' is a fantastic example of an exceptionally spacious and deceptive terraced cottage that has stunning views from the upstairs rear window out to Arran and Ailsa Craig. There is flexible living accommodation, with excellent potential to extend the property out to the rear in order to create an impressive family home, subject to the normal planning consents. The cottage has been a successful holiday let and is also set in generous, mature garden grounds that include a summer house, a detached garden store and off road parking facility.

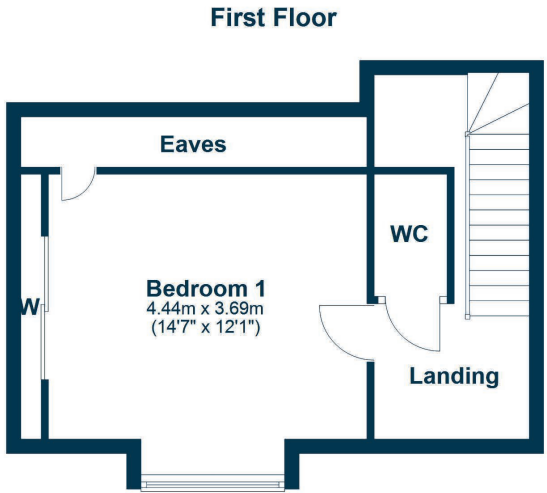
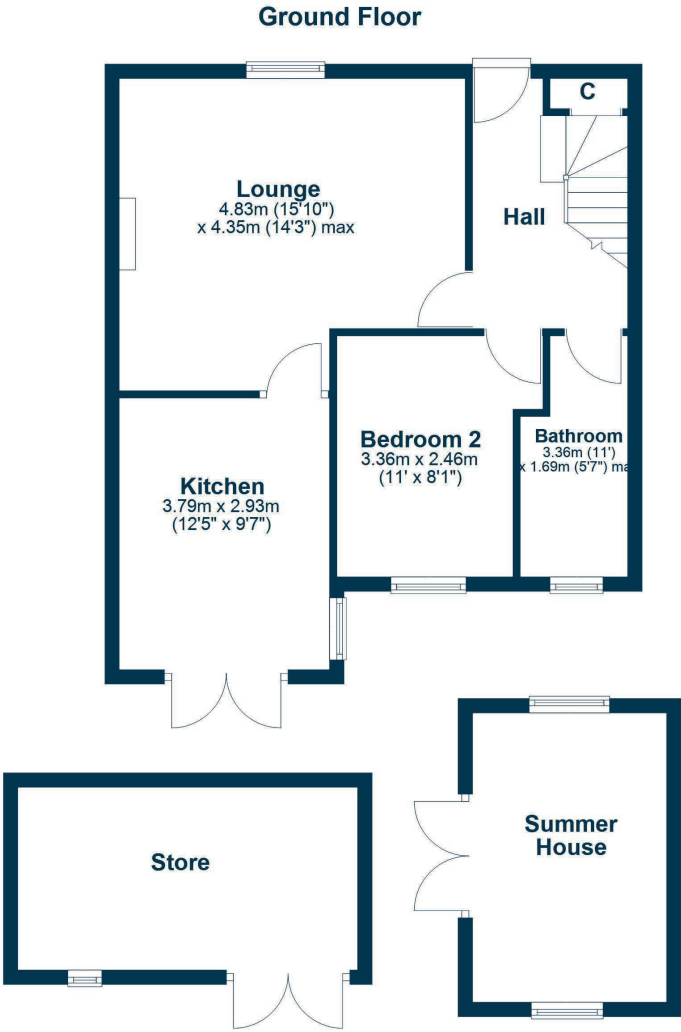
In more detail, the internal accommodation extends to an entrance hallway with a storage cupboard, a spacious lounge with a feature fireplace and wood burning stove, a modern fitted kitchen with ample wall and base units and French doors out to the rear garden, a downstairs double bedroom and a fitted family bathroom suite, with a shower over the bath. On the upper floor there is a WC off the landing and a large double bedroom, with fitted mirrored wardrobes and views at the rear out across the bay and out to Arran and Ailsa Craig. There is also access into the eaves.

Externally there are is hard landscaping to the front and access at the side round to the rear, with decorative aggregate allowing off road parking. There is a paved patio area and a walled garden, with lawn, a summer house, a garden store that is fully plastered with electricity, a pergola, mature trees and shrubs.









Maidens is a beautiful coastal fishing village located some 14 miles South West of Ayr and around 50 miles from Glasgow. It has a long sandy beach and wonderful foreshore that leads directly into the renowned Culzean Castle and Country Park. The village retains peace and tranquillity as well as a sense of history, as it was here at Maidens that Robert the Bruce landed when he sailed from Rathlin Island. The world famous Trump Turnberry Golf Resort (5 minutes by car) is synonymous with high class cuisine, championship golf and spa facilities. There are fantastic country walks, local shops in the village and a primary school.

AY5214 | Sat Nav: Rose Cottage, 21 Kirkoswald Road, Maidens, KA26 9NJ

For the full home report visit www.corumproperty.co.uk

* All measurements and distances are approximate Floorplans are for illustration purposes and may not be to scale.



WE'RE **SOLD** ON
YOUR FUTURE



Corum Ayr
10 Beresford Terrace, Ayr, KA7 2EG

Tel: 01292 880 888

Email: ayr@corumproperty.co.uk

www.corumproperty.co.uk