



CRANSTON LODGE

2C CHALMERS ROAD, AYR

www.corumproperty.co.uk





3 | BEDROOMS

2 | BATHROOMS

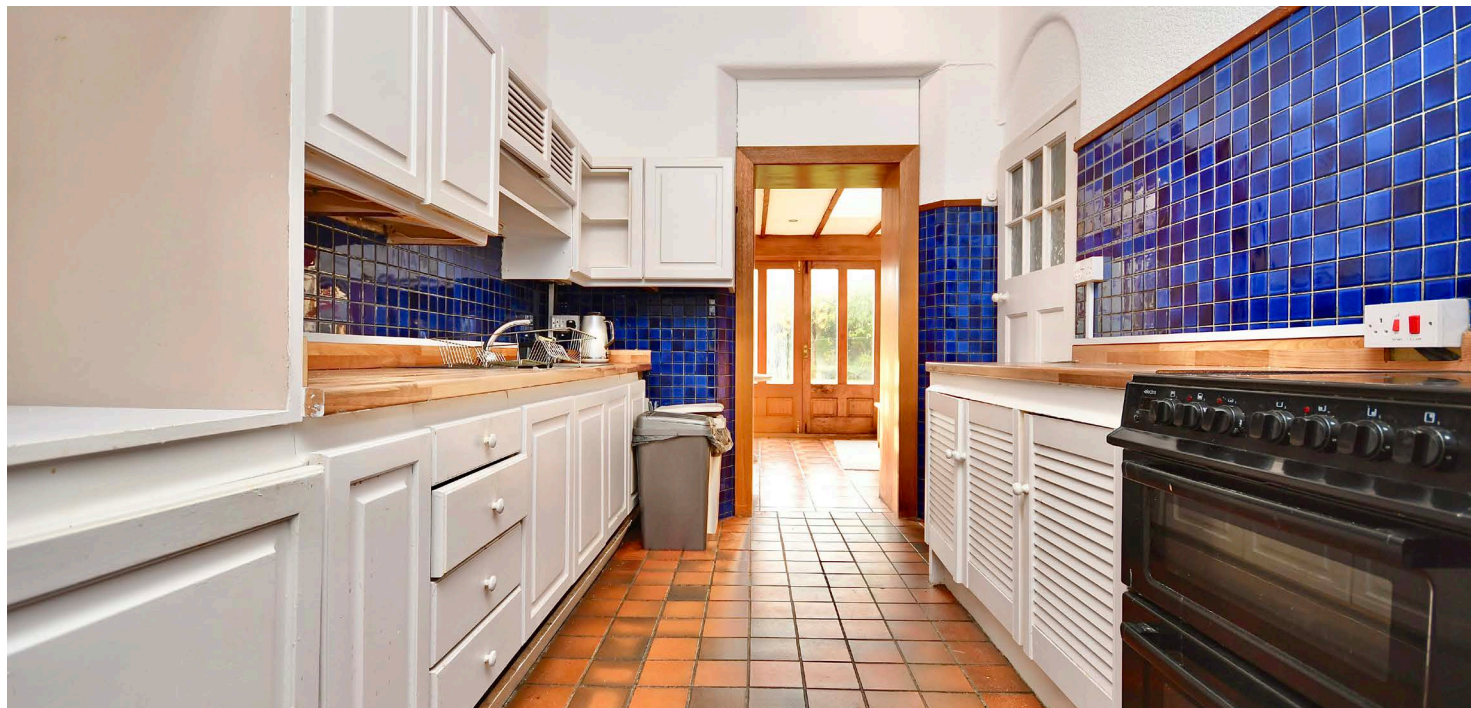
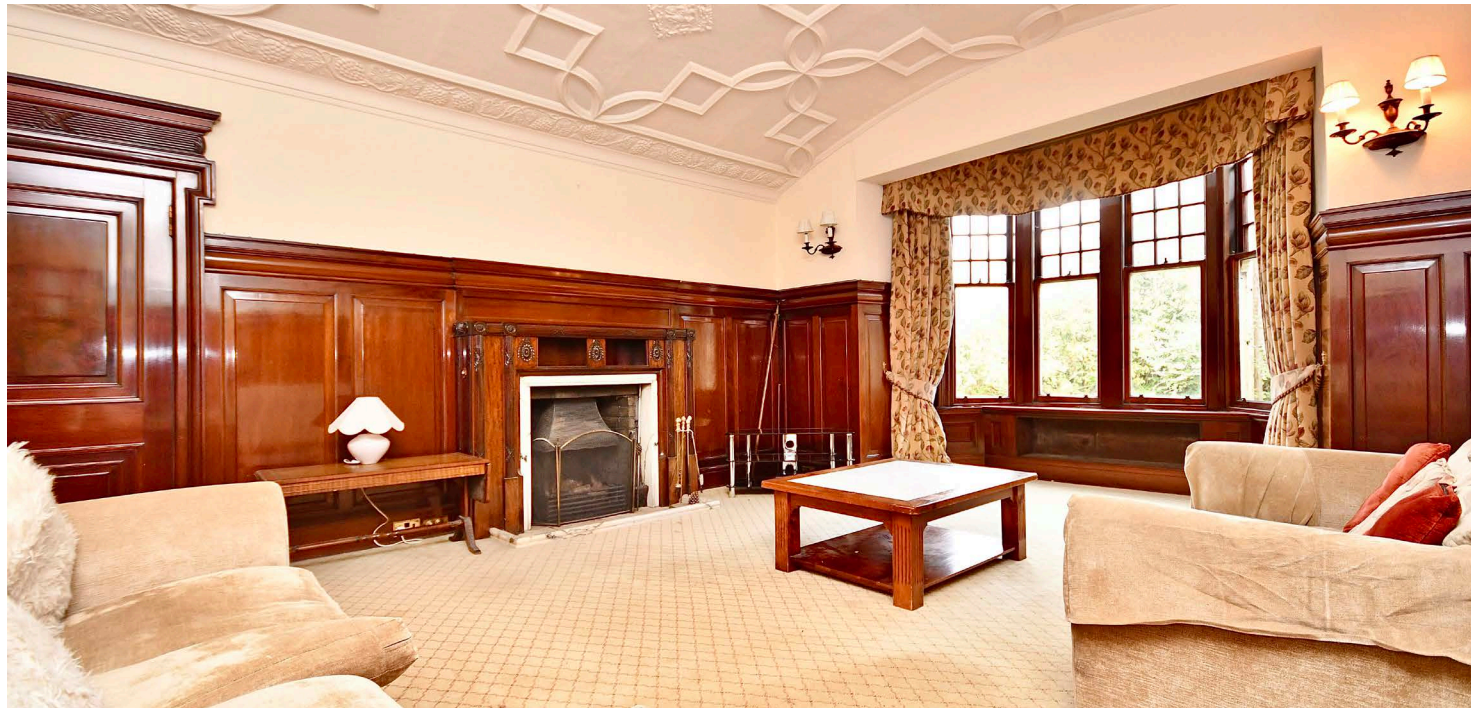
3 | PUBLIC ROOMS

A truly unique and generously proportioned ground floor conversion within a former mansion house, with communal south-facing gardens and set at the centre of the market town of Ayr.

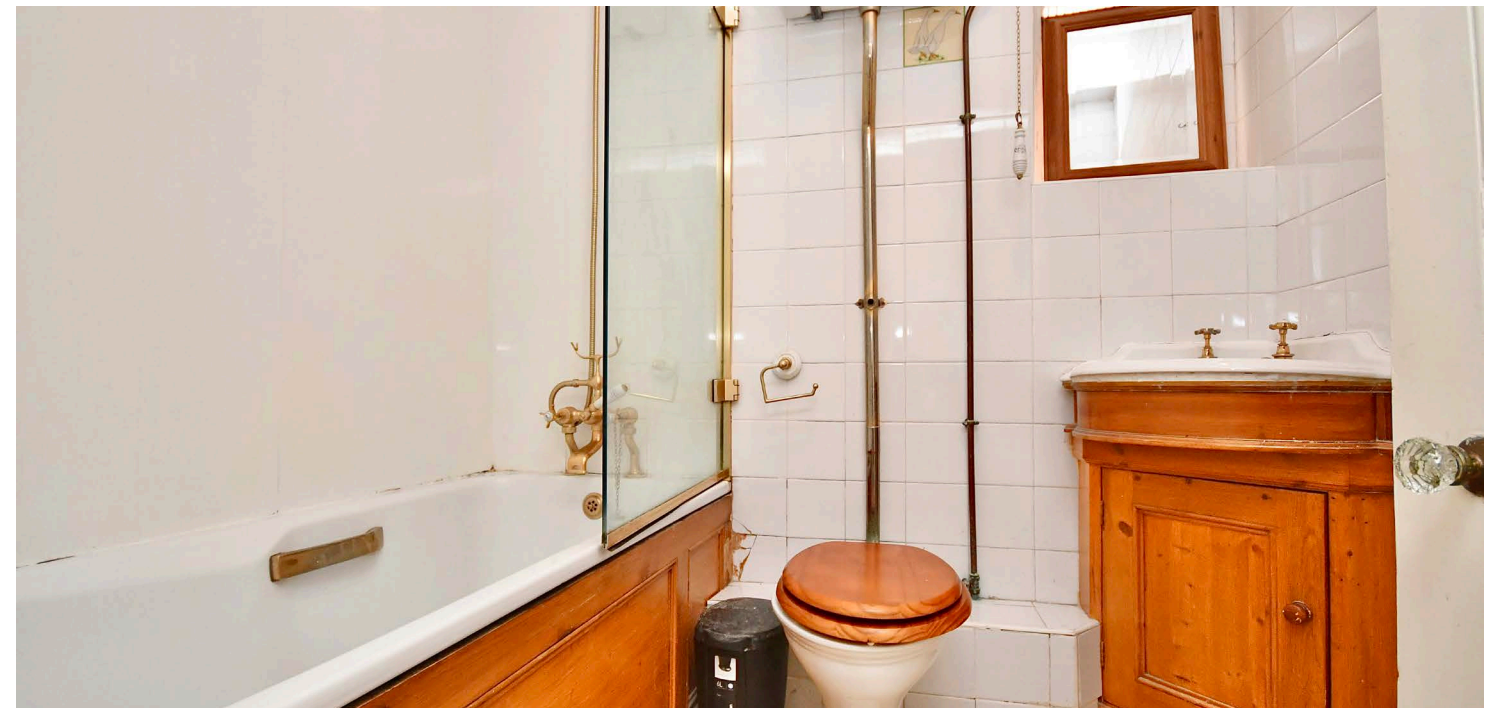
Cranston Lodge is an impressive period mansion house, set on a large plot on the corner of Chalmers Road and Carrick Road, with south-facing gardens to the rear and a horseshoe carriageway at the front. Forming a significant portion of the ground floor, 2c is an impressive conversion across six main apartments, with a garden room extension, an en suite shower room off the main bedroom and a separate bathroom suite. The all on-the-level accommodation will suit a range of buyers, and a real feature of this magnificent home is the substantial drawing room to the front, with a bay-window, fireplace and a vaulted ceiling with the original decorative ceiling mouldings. There is parking to the front, a private entrance and communal south-facing gardens at the rear laid mainly with lawn.

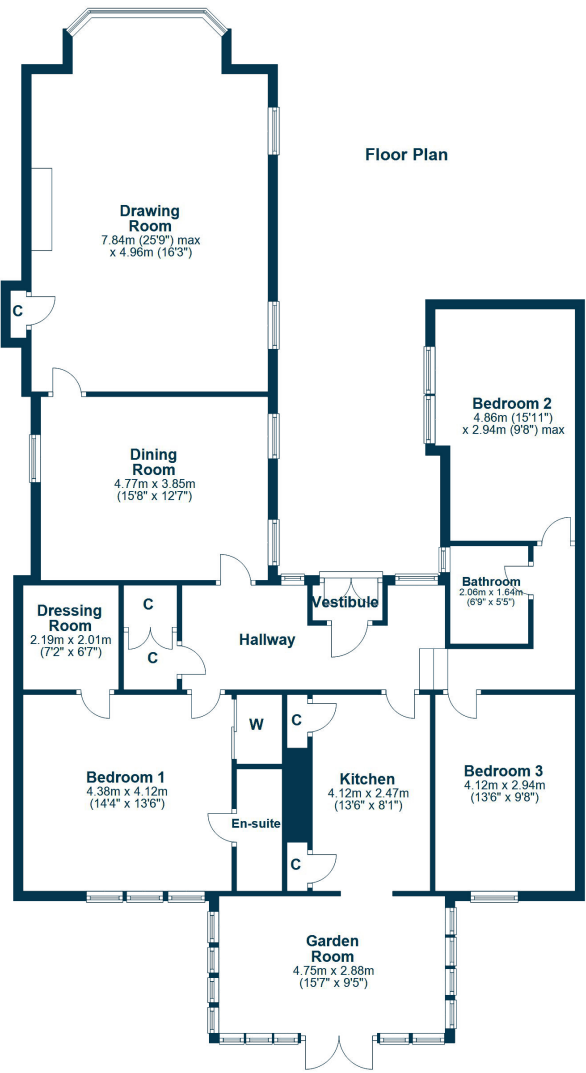
In more detail, the internal accommodation extends to an entrance vestibule, an inner hallway with a storage cupboard, a formal dining room leading through to the large bay-windowed drawing room, utilised as a lounge, a fitted kitchen leading through to a garden room, with French doors out to the garden, a master bedroom with a dressing room and en suite shower room, two further double bedrooms and a bathroom suite.

Externally the front garden areas are laid with hard-landscaping, mature shrubs and lawn, to create a horseshoe driveway. There is a large communal south-facing rear garden, with lawn, mature shrubs and paved pathways.









Chalmers Road is well-placed for all the amenities one would expect from a large coastal town. Ayr has a comprehensive range of retail shopping, restaurants and recreational facilities, including the popular Ayr Racecourse. Transport links include Prestwick International Airport and swift commuting to Glasgow and surrounding districts via the electrified rail service or the A77/M77 road network.

AY5094 | Sat Nav: Cranston Lodge, 2c Chalmers Road, Ayr, KA7 2RQ

For the full home report visit www.corumproperty.co.uk

* All measurements and distances are approximate Floorplans are for illustration purposes and may not be to scale.



WE'RE **SOLD** ON
YOUR FUTURE



Corum Ayr
10 Beresford Terrace, Ayr, KA7 2EG

Tel: 01292 880 888

Email: ayr@corumproperty.co.uk

www.corumproperty.co.uk