



# 4 SOUTHFIELD PARK

AYR

[www.corumproperty.co.uk](http://www.corumproperty.co.uk)





**3 | BEDROOMS**

**1 | BATHROOM**

**1 | PUBLIC ROOM**

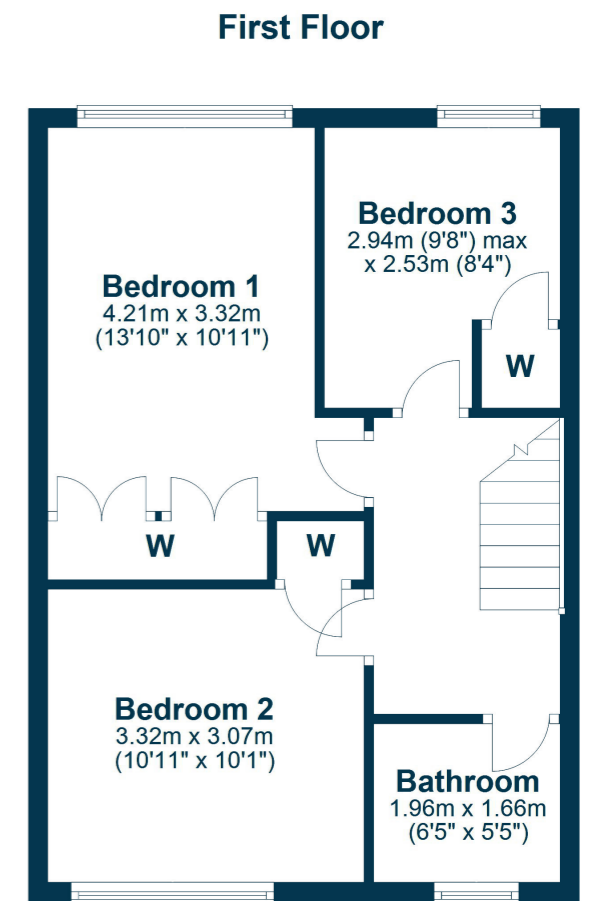
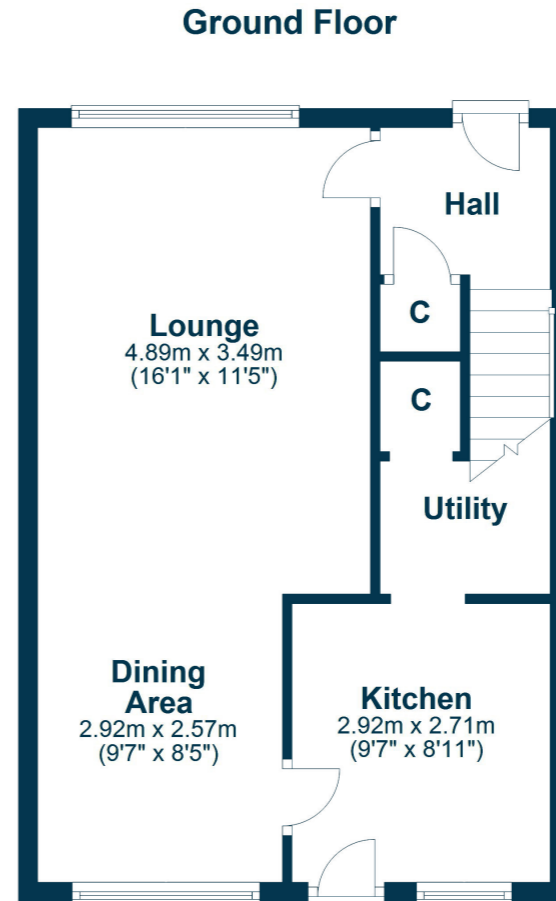
**A beautifully presented end terraced family home nestled within the popular Belmont area of Ayr, with private gardens and ample resident's parking.**

Southfield Park is located just a short walk from both Belmont Academy and the amenities of Ayr town centre, including transport links and retail shopping. Number 4 is a fantastic example of an end terraced family villa that is presented to the market in pristine condition, with a tastefully decorated interior and a wealth of spacious accommodation and ample storage throughout. There are also enclosed low-maintenance gardens to the rear, a front garden and parking for both residents and visitors.

In more detail, the internal accommodation extends to an entrance hallway with stairs leading to the upper floor and a storage cupboard, a spacious lounge leading open plan to a dining area and a fitted luxury dining kitchen with a utility and a door to the rear garden. On the upper floor there are two large double bedrooms, both with fitted wardrobes, a storage cupboard and loft access off the landing, a modern family bathroom suite and a single bedroom with a fitted wardrobe.

Externally there are gardens to the front, laid mainly with lawn, with paved pathways and the rear garden is fully enclosed, with gated access, a paved patio area, decorative pebbles, lawn and a garden shed.





Southfield Park is a quiet residential address within the highly popular Belmont area. There are a number of local amenities including excellent schooling, while Ayr town centre is less than one mile distant and provides a more comprehensive range of amenities including supermarket and retail shopping.

**AY5048** | Sat Nav: 4 Southfield Park, Ayr, KA7 2NU

For the full home report visit [www.corumproperty.co.uk](http://www.corumproperty.co.uk)

\* All measurements and distances are approximate Floorplans are for illustration purposes and may not be to scale.



WE'RE **SOLD** ON  
YOUR FUTURE

  
C O R U M

Corum Ayr  
10 Beresford Terrace, Ayr, KA7 2EG

Tel: 01292 880 888

Email: [ayr@corumproperty.co.uk](mailto:ayr@corumproperty.co.uk)

[www.corumproperty.co.uk](http://www.corumproperty.co.uk)