



58 MIDTON ROAD

AYR

www.corumproperty.co.uk





4 | BEDROOMS

2 | BATHROOMS

3 | PUBLIC ROOMS

A much admired and beautifully presented traditional grade 'C' listed family home set in wonderful mature gardens of around 0.6 acres.

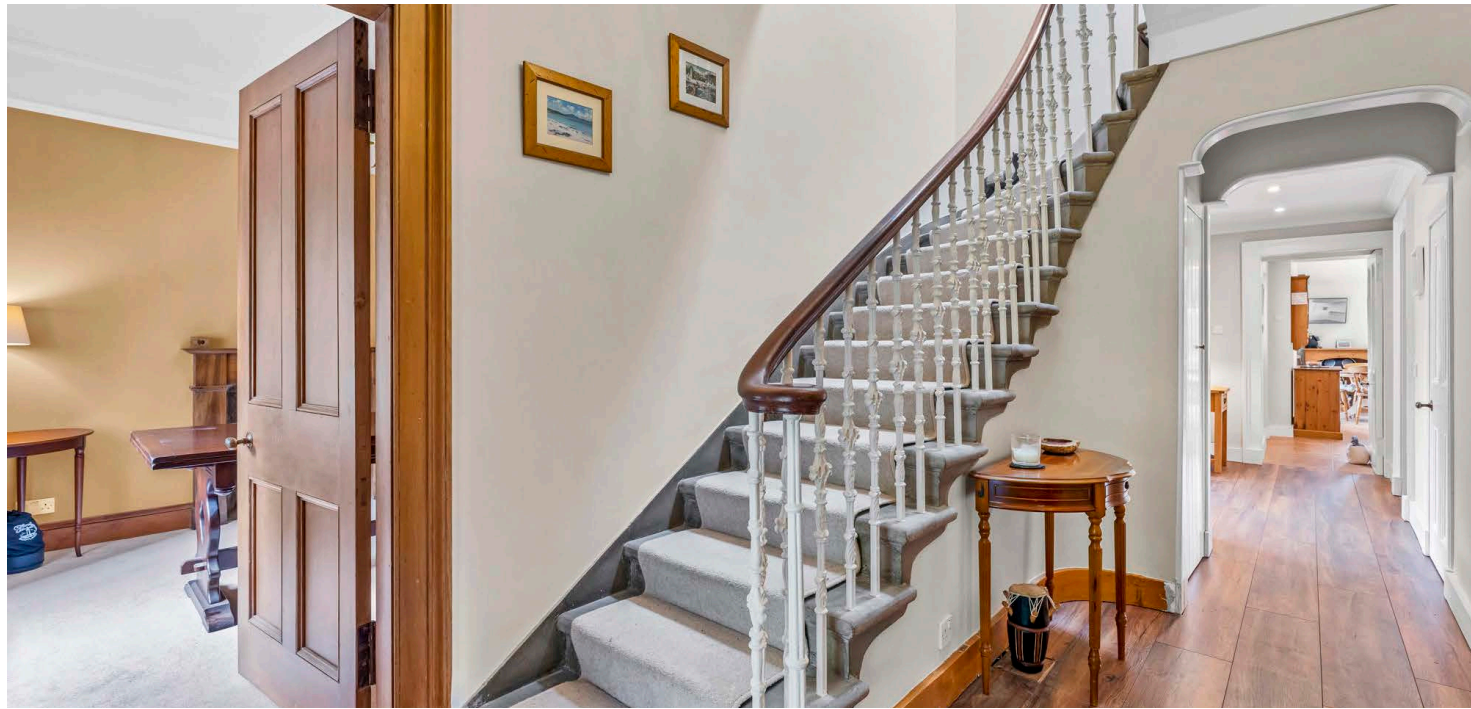
Midton Cottage is an exceptional family home set back from the road within one of Ayr's very best residential locations close to the town centre, seafront and Old Racecourse.

Built in the mid 19th century the property presents a pretty asymmetrical facade under a slate roof with beautifully proportioned accommodation extending to approximately 2500 square feet arranged over two levels.

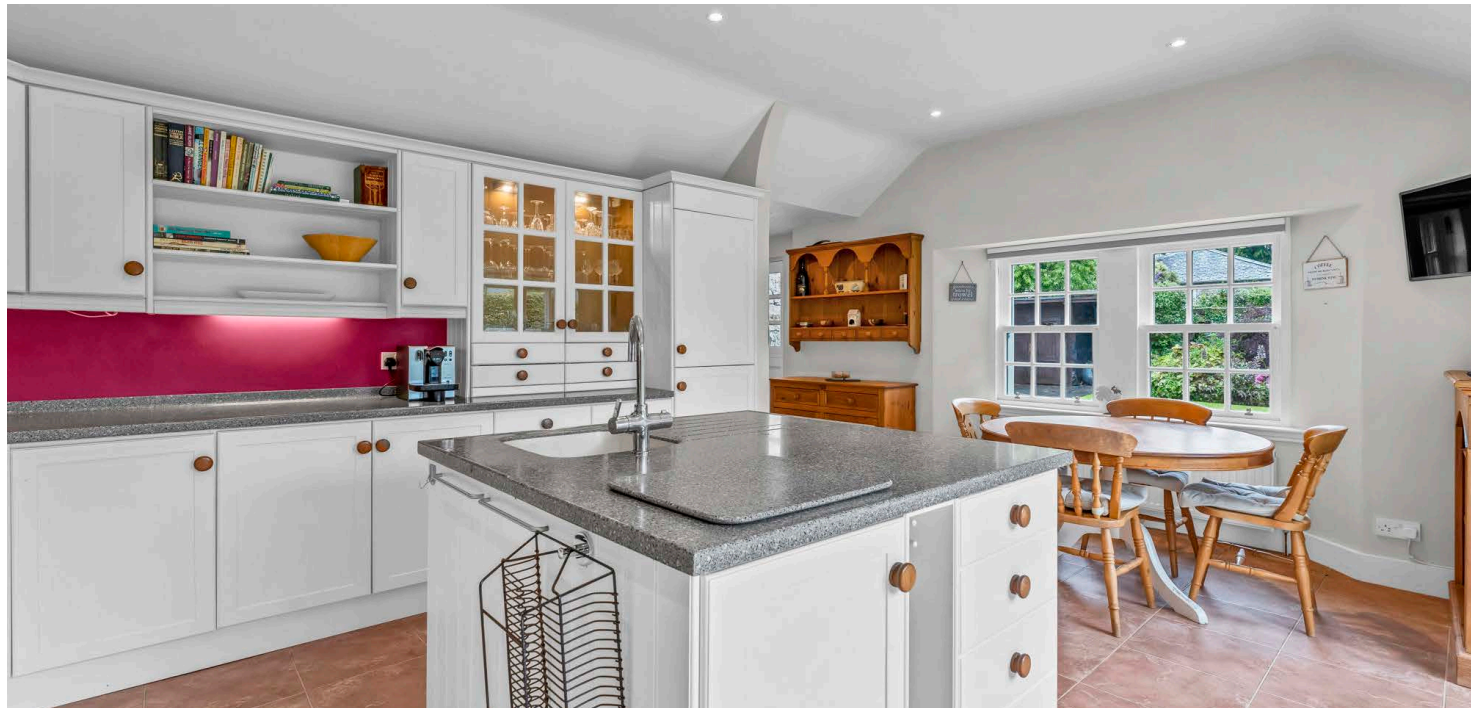
Originally a smaller cottage the property has been extended several times over the years including a superb dining kitchen addition to the rear with double doors to the gardens. Internally great care has been taken to retain a wealth of period features including detailed cornice work, working shutters, several fireplaces and hardwood skirtings. Modern finishes include the fitted kitchen with centre island, luxury sanitary ware with three bathrooms finished in Carrara marble, double glazing and gas central heating.

In summary the accommodation extends to, on the ground floor, an entrance vestibule, broad and welcoming reception hallway, formal lounge, family/dining room, sitting room, inner hall with two piece wc off, two utility rooms and a dining kitchen. Upstairs there are four good sized bedrooms (one with en-suite shower room). Completing the accommodation is a four piece family bathroom. The loft space is accessed via a pull down ladder and provides additional storage.

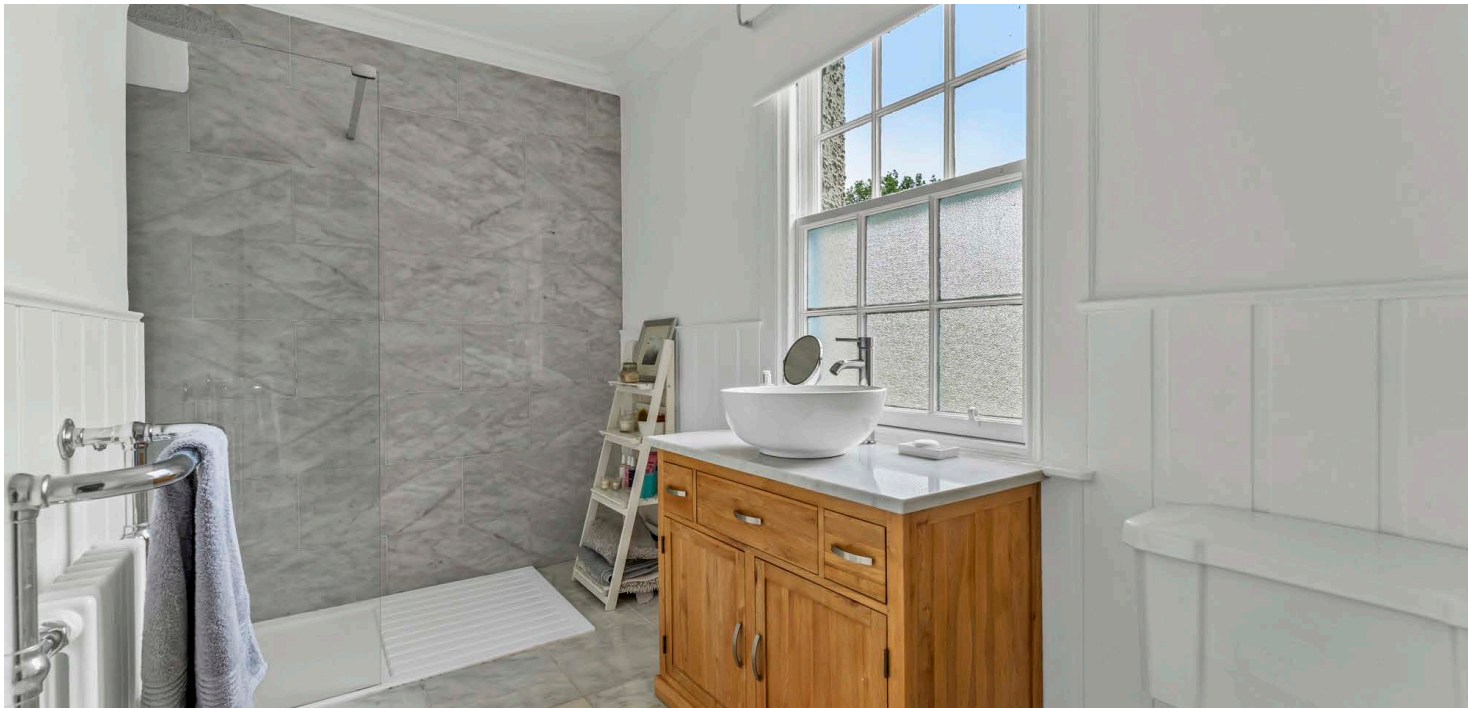
Externally the property is surrounded by the original walls which create a high level of privacy and is approached via a long driveway providing space for several vehicles to the front with gates to the side with further hard standing beyond. The extensive, mature gardens are predominantly lawned with well stocked shrubbery borders, seasonal plants, specimen trees and patio areas. The rear garden is split by hedging into two areas.

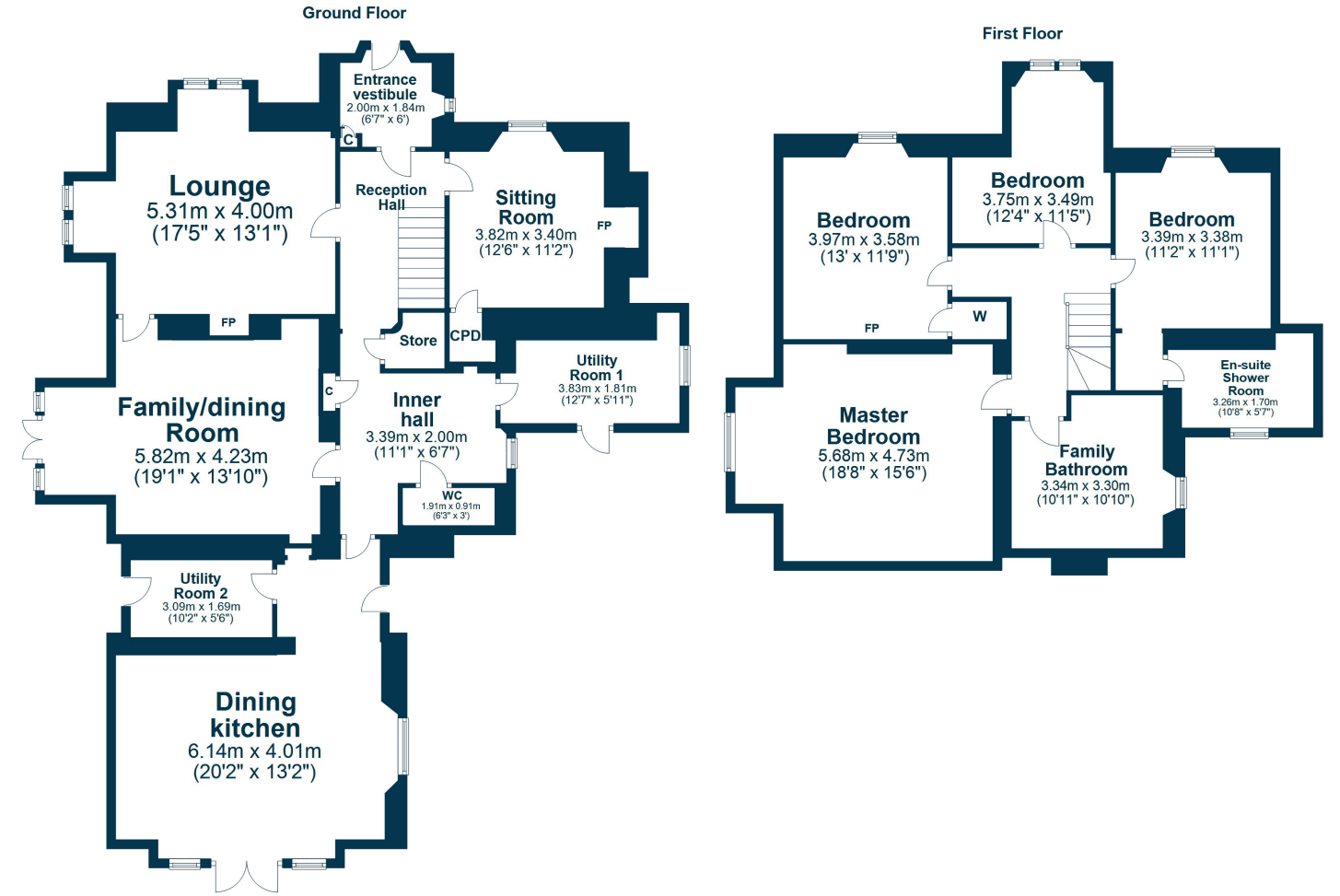












Midton Road is widely regarded as one of Ayr's foremost residential addresses being a short distance from the Low Green and sea front. Ayr town centre is less than 0.5 miles and provides a comprehensive range of amenities including excellent supermarket and retail shopping, transport links and recreational facilities. In addition there is both primary and secondary schooling within close proximity including private schooling at Wellington.

AY4954 | Sat Nav: 58 Midton Road, Ayr, KA7 2TP

For the full home report visit www.corumproperty.co.uk

* All measurements and distances are approximate Floorplans are for illustration purposes and may not be to scale.



WE'RE **SOLD** ON
YOUR FUTURE



C O R U M

Corum Ayr
10 Beresford Terrace, Ayr, KA7 2EG

Tel: 01292 880 888

Email: ayr@corumproperty.co.uk

www.corumproperty.co.uk