



9 BROOMPARK AVENUE
PRESTWICK

www.corumproperty.co.uk





2 | BEDROOMS

1 | BATHROOM

1 | PUBLIC ROOM

A fantastic semi-detached bungalow set close to Prestwick town centre, with a beautifully presented interior, gorgeous garden grounds and off road parking.

Broompark Avenue is a quiet and popular tree-lined address, located just a short walk from the range of boutique shops and restaurants in Prestwick town, excellent schools and transport links. Number 9 offers to the market a deceptively spacious semi-detached bungalow that is presented to the market in walk-in condition, with quality floor coverings, neutral decor and ample storage. There is an undeveloped loft space and the gardens complement the interior perfectly, with a stunning array of shrubs, plants, and hard landscaping, that surround the property and include a monoblock driveway to the front.

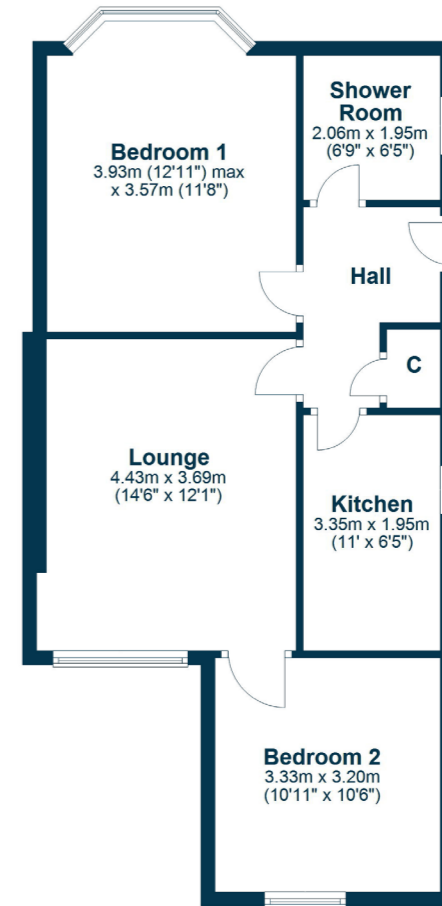
In summary, the internal accommodation extends to an entrance hallway with a storage cupboard, a spacious lounge to the rear that leads through to the second double bedrooms, a modern fitted kitchen with ample wall and base units, a tiled shower room suite, with loft access, and a large bay-windowed main bedroom to the front.

Externally there is a private garden to the front, laid with monoblock to provide ample off road parking and highlighted by decorative borders with colourful plants and shrubs. There is gated access at the side round to a fully enclosed rear garden, with mature shrubs and roses, decorative aggregate and hedging.





Floor Plan



Broompark Avenue is a highly sought after residential address due to its close proximity to Prestwick Main Street and local schools. The town centre provides a plethora of boutique shops, bars and restaurants, while there are excellent road and rail links to Glasgow. Prestwick also provides a comprehensive range of sporting and recreational facilities, including golf courses, a vibrant sailing club, tennis and bowling clubs and an indoor swimming pool complex.

AY4941 | Sat Nav: 9 Broompark Avenue, Prestwick, KA9 1LR

For the full home report visit www.corumproperty.co.uk

* All measurements and distances are approximate Floorplans are for illustration purposes and may not be to scale.



WE'RE **SOLD** ON
YOUR FUTURE



Corum Ayr
10 Beresford Terrace, Ayr, KA7 2EG

Tel: 01292 880 888

Email: ayr@corumproperty.co.uk

www.corumproperty.co.uk