



**153D PRESTWICK ROAD**

AYR

[www.corumproperty.co.uk](http://www.corumproperty.co.uk)





1 | BEDROOM

1 | BATHROOM

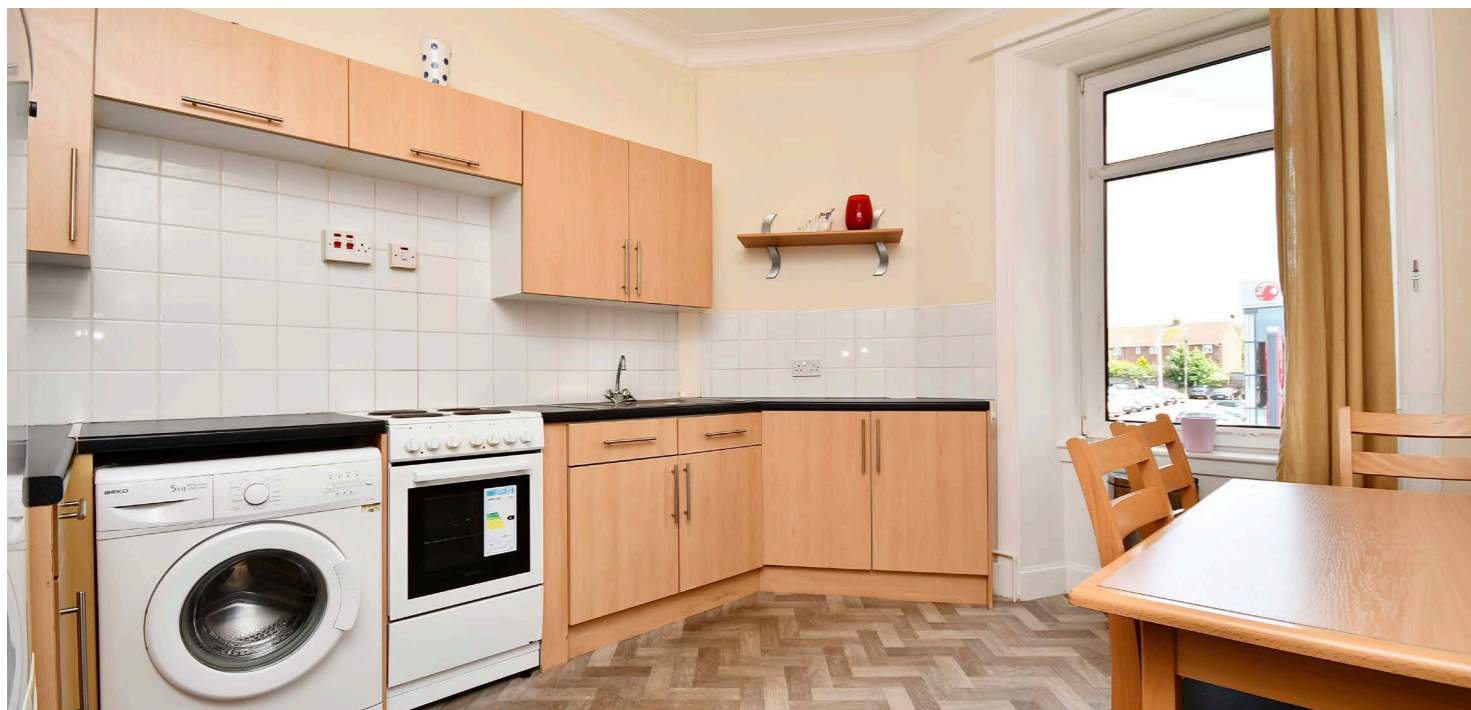
1 | PUBLIC ROOM

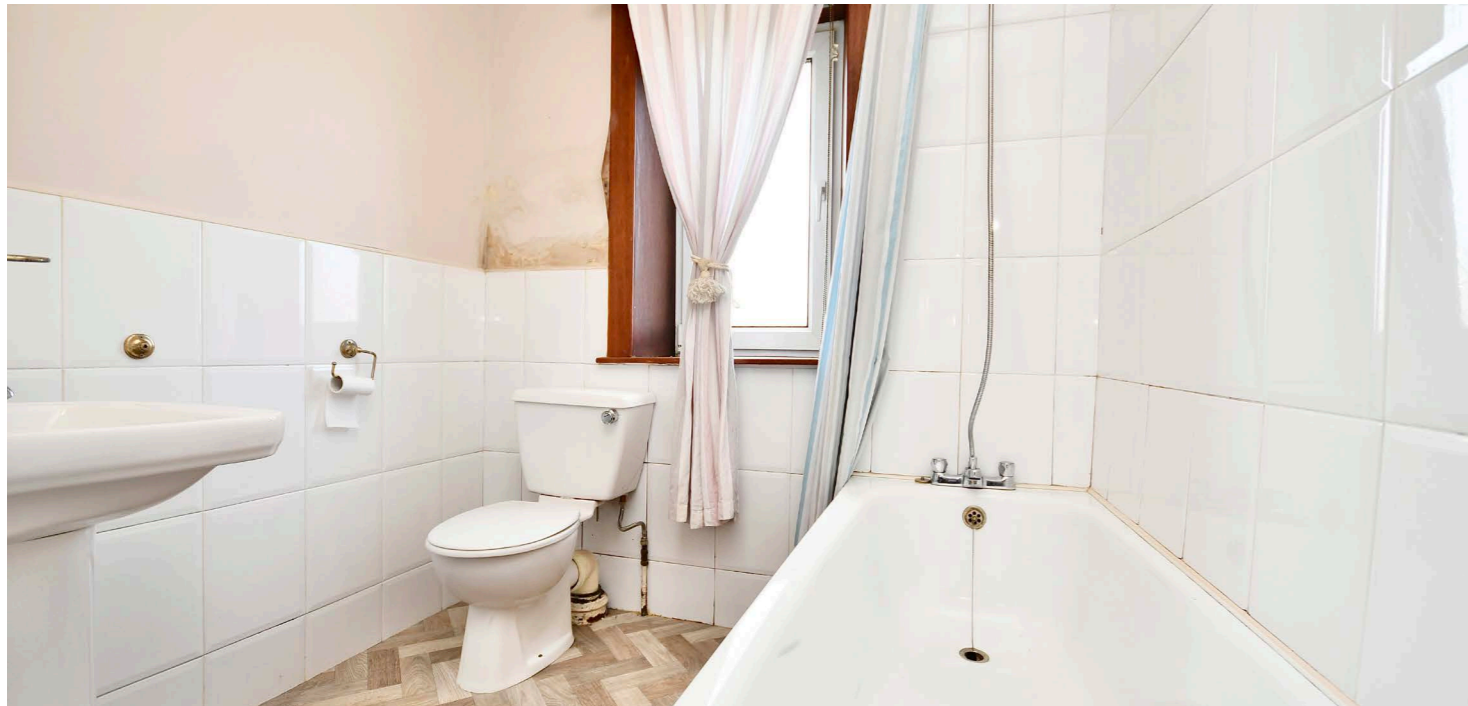
**A substantial traditional first floor apartment close to Heathfield in Ayr, with a well-presented interior, generous room proportions and communal gardens.**

Number 153d occupies a preferred first floor position within an attractive sandstone building that is perfectly placed between Ayr and Prestwick town centres. It is within walking distance of the primary school and extensive retail shopping at Heathfield, the train station at Newton-on-Ayr and there is immediate access to local and national bus links. This fantastic apartment offers spacious accommodation across one floor, with traditional high ceilings, original interior doors, neutral decor and ample storage. There is also a communal garden at the rear laid mainly with lawn.

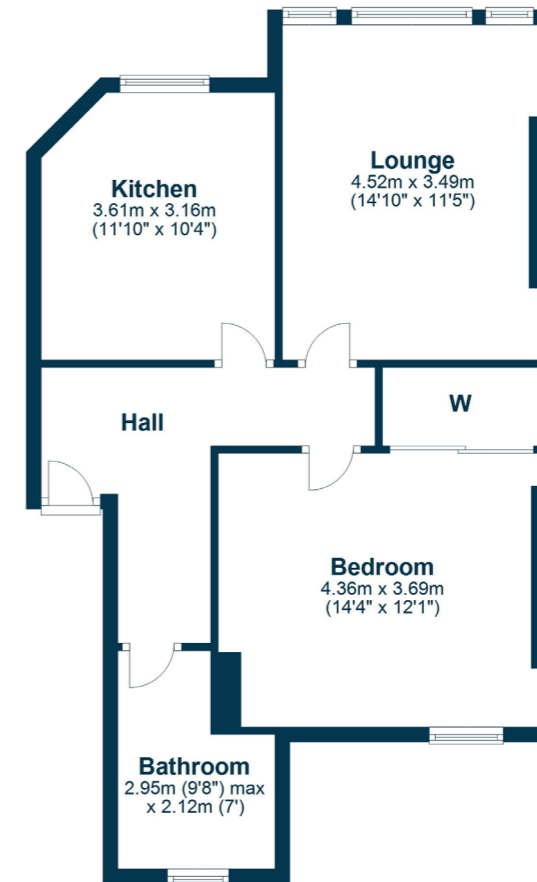
In summary the accommodation extends to a communal hall with secure entry and stair access to all apartments. Apartment D has a private entrance hall, a spacious lounge with a feature fireplace, a large double bedroom with fitted mirrored wardrobes and a built-in cupboard, a fitted dining kitchen with ample wall and base units and a bathroom suite.

Externally there are communal gardens predominantly laid to lawn with on street parking to the front.





Floor Plan



The property is perfectly placed for a wide range of amenities including Newton-on-Ayr railway station, which links to Ayr and Glasgow, shops at Heathfield and schooling. Ayr town centre is just over one mile distant and provides a more comprehensive range of amenities including supermarket and retail shopping.

AY4938 | Sat Nav: 153D Prestwick Road, Ayr, KA8 8NN

For the full home report visit [www.corumproperty.co.uk](http://www.corumproperty.co.uk)

\* All measurements and distances are approximate Floorplans are for illustration purposes and may not be to scale.

WE'RE **SOLD** ON  
YOUR FUTURE



c o r u m

Corum Ayr  
10 Beresford Terrace, Ayr, KA7 2EG

**Tel:** 01292 880 888

**Email:** [ayr@corumproperty.co.uk](mailto:ayr@corumproperty.co.uk)

[www.corumproperty.co.uk](http://www.corumproperty.co.uk)