



**7 CASTLE WALK**

DOONFOOT

[www.corumproperty.co.uk](http://www.corumproperty.co.uk)







**4 | BEDROOMS**

**2 | BATHROOMS**

**3 | PUBLIC ROOMS**

**Number 7 is a generous four bedroom detached family home, with an idyllic position, enjoying panoramic views out across the Firth of Clyde. The property has been extended by the current owners resulting in a deceptively spacious home with stunning family area, substantial private gardens and a double garage.**

This beachside four bedroom home is the perfect balance between simplicity and luxury, instantly conjuring up sunlit days by the shore with flexible living spaces and a private garden to enjoy a harmonious and idyllic lifestyle - a rarely available location with stunning panoramic views across the Firth of Clyde to Arran.

A neutral colour scheme throughout emphasises the living spaces especially in the extended family room with its soaring ceiling/feature windows that maximise light - a thoughtful design for modern living. Sophisticated interiors and garden grounds convey the idea that you've escaped the daily grind.

In more detail, the internal accommodation extends to a welcoming hallway with stairs to the upper floor, a cloakroom/WC, a spacious front facing lounge with ground floor sea views, under stairs storage, a modern fitted kitchen with integrated appliances, a utility room, a dining room, and a family room complete with French doors leading out to the rear garden grounds. On the upper floor there are two front facing double bedrooms allowing spectacular views out to sea and towards Greenan Castle, two further double bedrooms to the rear, and a stylish contemporary family bathroom, with quality fixtures and fittings throughout. The property also benefits from solar panels.

Externally there is a long driveway to the front, with a lawn, highlighted by decorative shrubs, that extends along the side to a large detached double garage, with an electric up-and-over door, complete with rear store room. The generous south facing rear garden has a lawn, patio areas, decorative borders and is meticulously maintained.









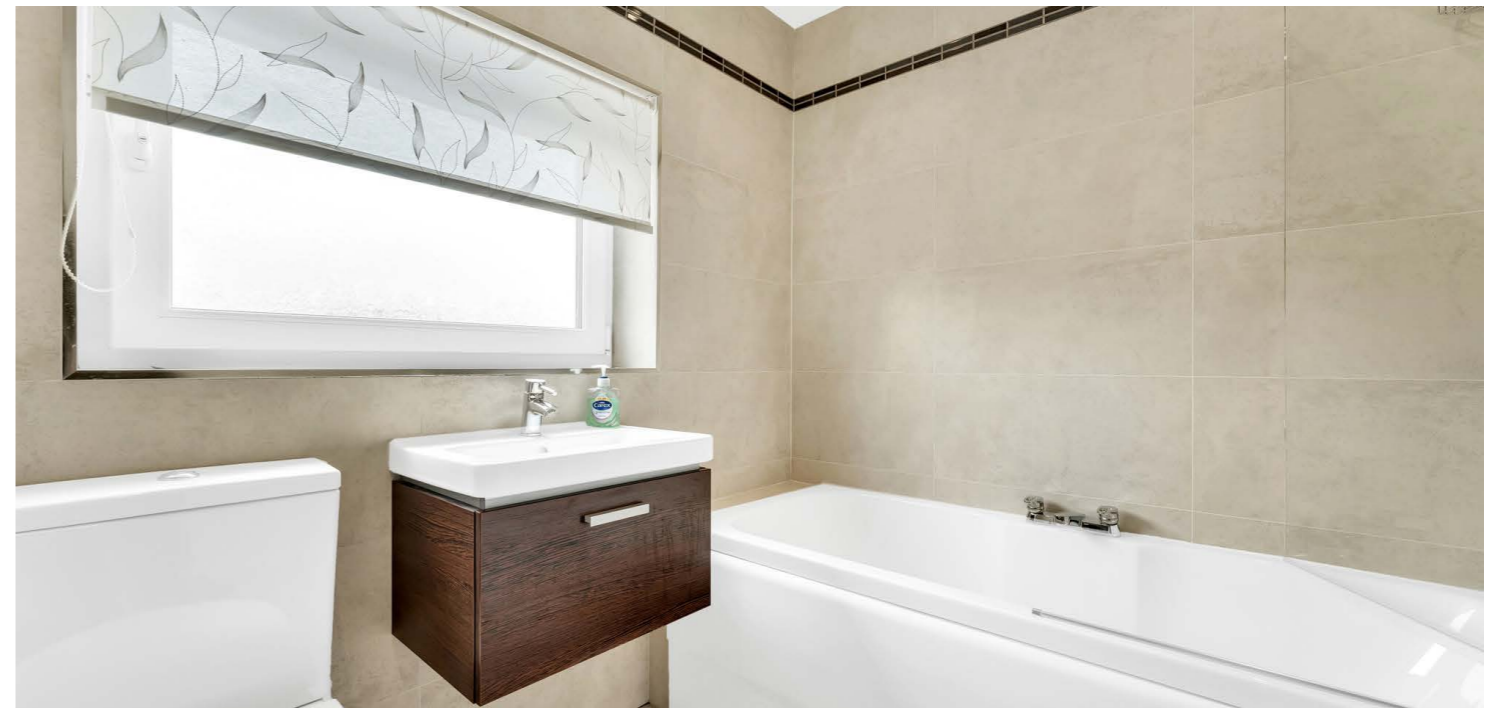








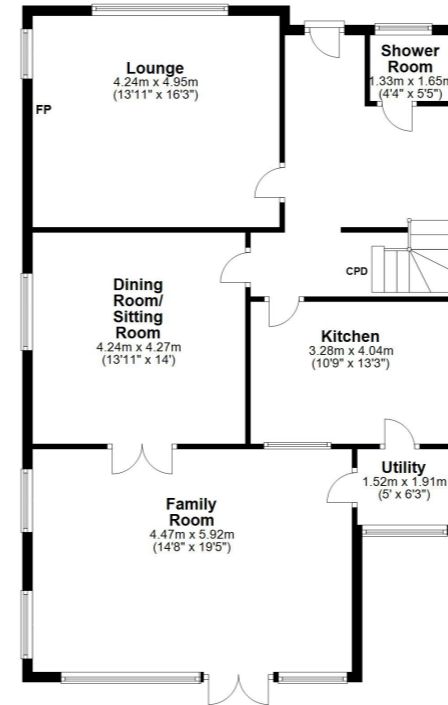




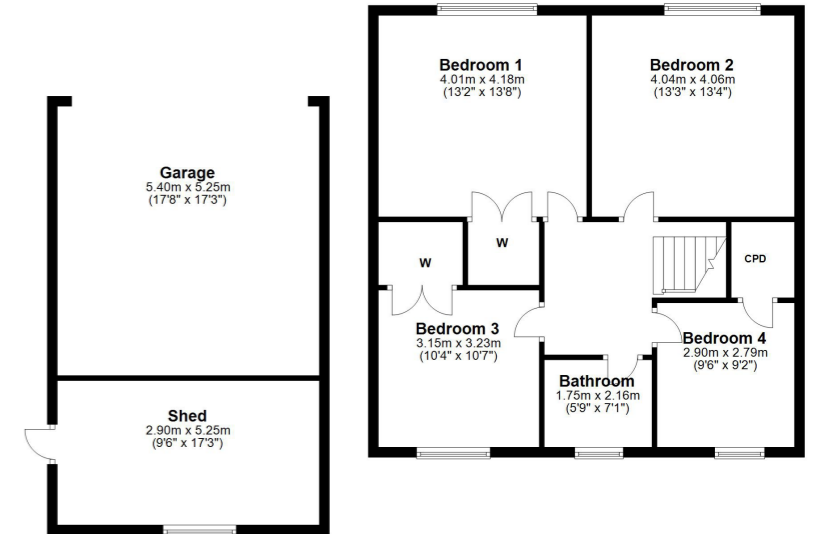




Ground Floor



First Floor



Number 7 is a generous four bedroom detached family home, with an idyllic position, enjoying panoramic views out across the Firth of Clyde. The property has been extended by the current owners resulting in a deceptively spacious home with stunning family area, substantial private gardens and a double garage.

AY4917 | Sat Nav: 7 Castle Walk, Doonfoot, KA7 4HH

For the full home report visit [www.corumproperty.co.uk](http://www.corumproperty.co.uk)

\* All measurements and distances are approximate Floorplans are for illustration purposes and may not be to scale.





WE'RE **SOLD** ON  
YOUR FUTURE



Corum Ayr  
10 Beresford Terrace, Ayr, KA7 2EG

**Tel:** 01292 880 888

**Email:** [ayr@corumproperty.co.uk](mailto:ayr@corumproperty.co.uk)

[www.corumproperty.co.uk](http://www.corumproperty.co.uk)