



**11 HANNAH WYND**

ST QUIVOX, AYR

[www.corumproperty.co.uk](http://www.corumproperty.co.uk)







4 | BEDROOMS

3 | BATHROOMS

2 | PUBLIC ROOMS

Number 11 is a fantastic four bedroom family home, which provides all the conveniences one would expect from an executive property. Built by Cala homes, this family home provides a stylish and flexible layout with open plan kitchen and dining spaces.

Features and benefits include a fitted kitchen with integrated appliances, luxury sanitary ware, generous storage space, fitted wardrobes, double glazing, gas central heating, neutral decoration, and quality floor coverings throughout.

In summary, the accommodation extends to, on the ground floor, a vestibule with storage cupboard, a welcoming reception hallway, a WC, a front facing formal lounge with a feature fireplace, a stunning open plan kitchen/dining/family room, with patio doors leading onto the private rear garden, a separate utility room with access to the integral garage.

Upstairs there are four generous double bedrooms all benefiting from integrated wardrobes plus there is a home office (fifth bedroom if required). The master and second bedroom both enjoy modern en-suite shower rooms plus there is a modern family bathroom with a bath and a separate shower. The property is complete with gas central heating, double glazing and high quality floor coverings throughout.

Externally, there is a double block paved driveway. The enclosed rear garden has modern landscaping with artificial grass as a feature. Early viewing is essential.





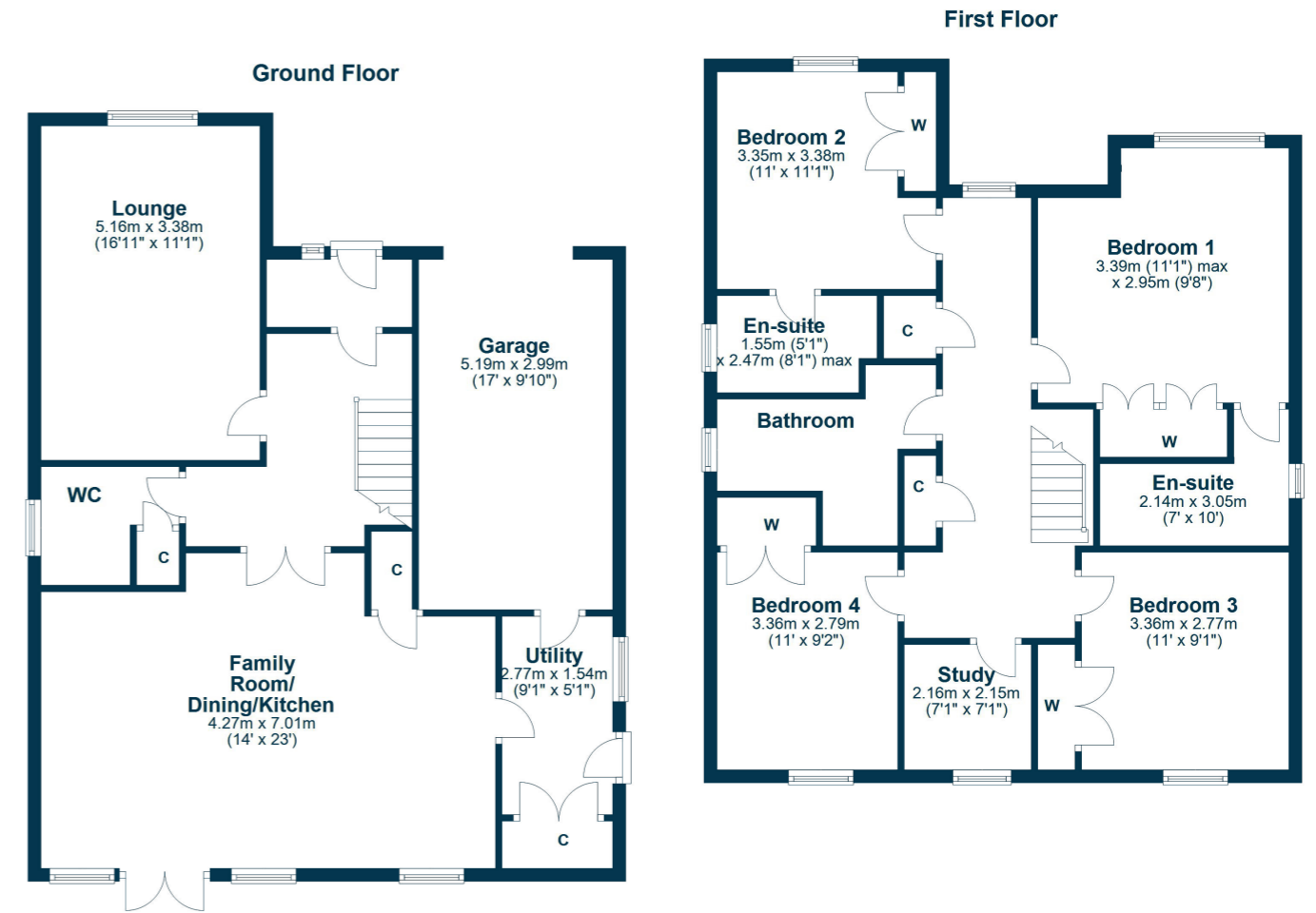












'Kirk Green' is a stunning development of four and five-bedroom villas from Cala's award-winning signature collection. Surrounded by rolling farmland the development is perfectly placed for the bypass linking to Glasgow and surrounding districts. Heathfield retail estate is 1.5 miles away and has a comprehensive range of amenities including supermarket and retail shopping, cafe's, restaurants and recreational facilities. Ayr town centre is around four miles distant and provides a comprehensive range of amenities including supermarket and retail shopping, transport, and recreational facilities.

AY4880 | Sat Nav: 11 Hannah Wynd, St Quivox, Ayr, KA6 5HB

For the full home report visit [www.corumproperty.co.uk](http://www.corumproperty.co.uk)

\* All measurements and distances are approximate Floorplans are for illustration purposes and may not be to scale.





WE'RE **SOLD** ON  
YOUR FUTURE



Corum Ayr  
10 Beresford Terrace, Ayr, KA7 2EG

**Tel:** 01292 880 888

**Email:** [ayr@corumproperty.co.uk](mailto:ayr@corumproperty.co.uk)

[www.corumproperty.co.uk](http://www.corumproperty.co.uk)