



31 BENTFIELD DRIVE
PRESTWICK

www.corumproperty.co.uk





2 | BEDROOMS

1 | BATHROOM

2 | PUBLIC ROOMS

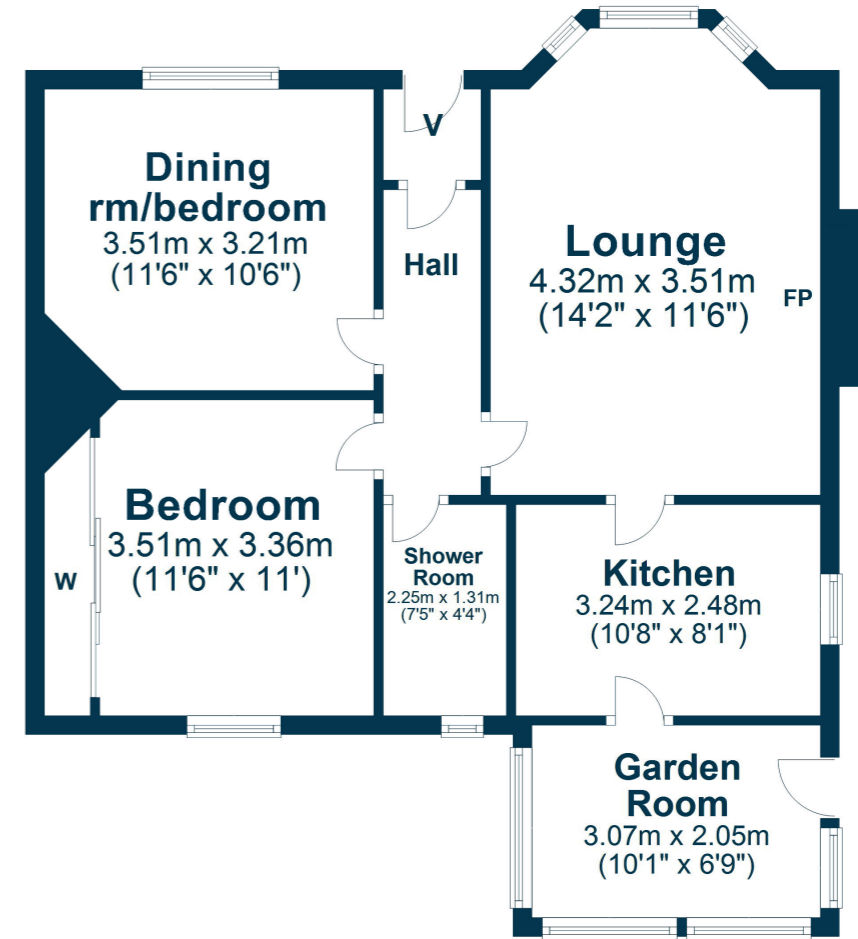
A charming traditional semi-detached bungalow providing all on the level living with generous gardens and located within a highly regarded residential address.

Number 31 is a traditional semi-detached bungalow suited to a variety of potential purchasers and particularly those clients seeking all on the level living. Offered to the market for the first time in almost 50 years the property has been lovingly cared for by the current owner and enjoys a generous plot with space to extend to the rear if required.

In summary the accommodation extends to, a vestibule, reception hallway, bay windowed lounge, dining room/bedroom, fitted kitchen, garden room, double bedroom with fitted wardrobes and three piece shower room. In addition, the property has gas central heating with a 'Potterton' boiler, neutral decoration and double glazing. The loft space (accessed via a pull-down ladder) has been floored and lined and provides further development potential.

Externally there are gardens to the front and rear with a long driveway to the side culminating in the detached timber garage. The rear garden is laid to low maintenance with extensive patio area.





Bentfield Drive is a popular and quiet residential locale close to a wide range of amenities. Both Ayr and Prestwick town centres are within close proximity and provide a comprehensive range of amenities including supermarket and retail shopping, transport and recreational facilities. For the commuter there are excellent road and rail links to Glasgow and surrounding areas.

AY4779 | Sat Nav: 31 Bentfield Drive, Prestwick, KA9 1TT

For the full home report visit www.corumproperty.co.uk

* All measurements and distances are approximate Floorplans are for illustration purposes and may not be to scale.



WE'RE **SOLD** ON
YOUR FUTURE



Corum Ayr
10 Beresford Terrace, Ayr, KA7 2EG

Tel: 01292 880 888

Email: ayr@corumproperty.co.uk

www.corumproperty.co.uk