



31 HANNAH WYND

ST QUIVOX, AYR

www.corumproperty.co.uk





5 | BEDROOMS

5 | BATHROOMS

4 | PUBLIC ROOMS

A truly exceptional five bedroom family home constructed by Cala Homes which forms part of their exclusive signature collection of luxury homes at Kirk Green, St Quivox, Ayrshire.

This stunning detached villa offers impressive family accommodation across two levels and occupy one of the best plots within the development with private enclosed gardens to the rear. It is a large home with accommodation that extends to almost 3000 sq ft.

The present owners have enhanced the property immeasurably through a comprehensive interior design programme. Stylish wall coverings throughout from designers such as Emma Shipley and Roberto Cavalli, bespoke wine wall crafted from locally sourced live edge oak, state of the art media wall with ribbon fire and a gas central heating controlled by Google Nest system are just a few of the salient features.

The result is a truly stunning and contemporary home that would particularly suit the large family/professional commuter given there is a dedicated home office providing ample space to be able to work from home.

In more detail accommodation comprises entrance vestibule, reception hall, home office, cloaks/wc, formal lounge, separate dining room, fully fitted open plan designer kitchen/family/breakfast room with patio doors and a useful utility adjacent with access to a double integral garage. Upstairs there is a galleried upper landing with storage cupboards that provides access to five double bedrooms and a spacious family bathroom. Three of the bedrooms have en suite facilities and all bedrooms have fitted wardrobes. Outside the gardens offer a pleasant mix of soft and hard landscaped areas.

There is a monobloc drive and paths to the front with artificial lawn. The rear garden is fully enclosed and offers a high degree of privacy. There is an all weather decked patio with glazed balustrade, natural lawn and decorative shrubbery borders.





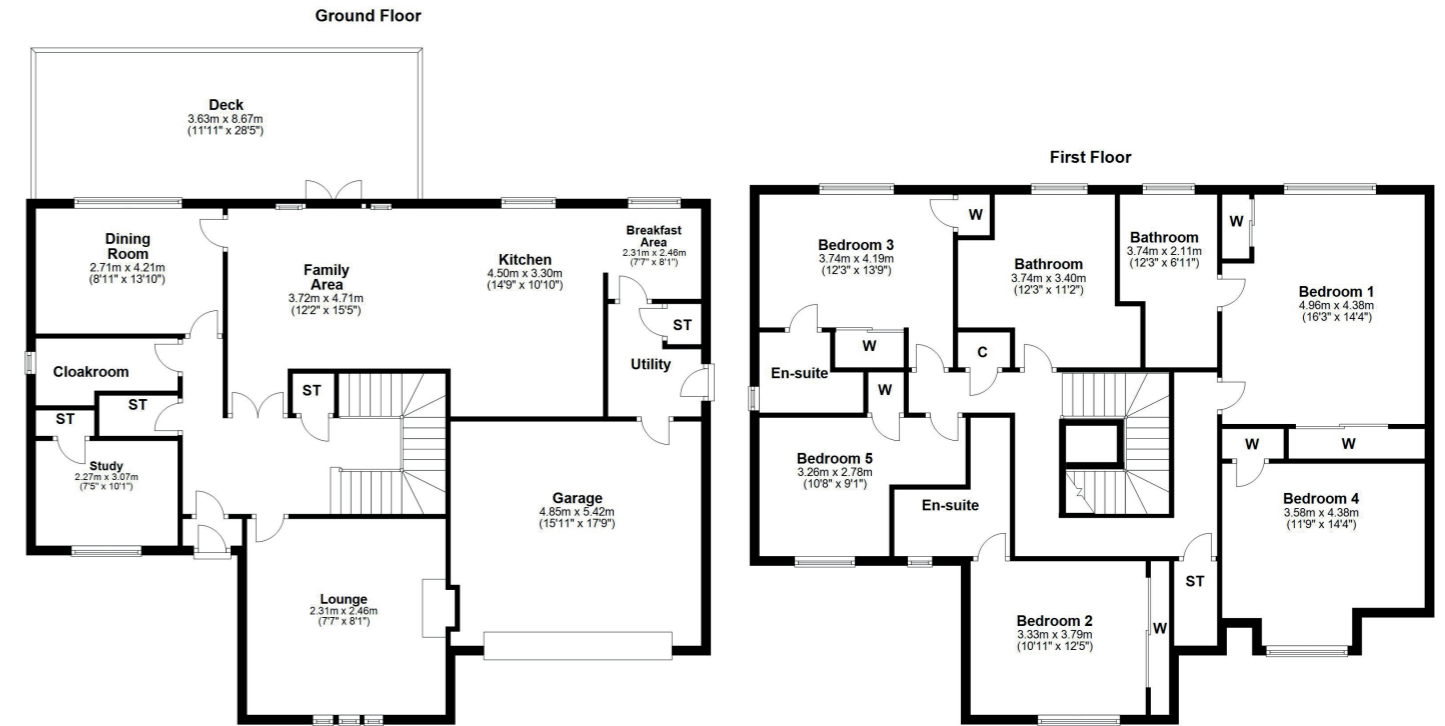












'Kirk Green' is a stunning development of four and five bedroom villas from Cala's award winning signature collection. Surrounded by rolling farmland the development is perfectly placed for the bypass linking to Glasgow and surrounding districts.

AY4791 | Sat Nav: 31 Hannah Wynd, St Quivox, Ayr, KA6 5HB

For the full home report visit www.corumproperty.co.uk

* All measurements and distances are approximate Floorplans are for illustration purposes and may not be to scale.



WE'RE **SOLD** ON
YOUR FUTURE



C O R U M

Corum Ayr
10 Beresford Terrace, Ayr, KA7 2EG

Tel: 01292 880 888

Email: ayr@corumproperty.co.uk

www.corumproperty.co.uk