

Trusted since 1802
HENLEY-ON-THAMES | MARLOW | BASINGSTOKE

SIMMONS & SONS



41 Victoria Road
Marlow, SL7 1DW

Asking Price £350,000
Leasehold

**41 Victoria Road
Marlow
SL7 1DW**

A Two Bedroom Ground Floor
Maisonette

- Two Double Bedrooms
- Short Walk to High Street
- Good Size Living/Dining Space
- Fitted Kitchen
- Recently Fitted Bathroom
- Private Decked Courtyard Garden
- Off Street Parking



A rare opportunity to purchase this spacious Two Double Bedroom Ground Floor Maisonette benefitting from its own Courtyard Garden and Off-Street Parking. Presented in good order and with a recently re-fitted Bathroom, the property would benefit from some decoration/updating. Situated within a short level walk of the High Street, Station, Open Parkland and River Thames, early viewings are advised to avoid disappointment.

Accommodation

Approaching the property through the car parking area, the maisonette is accessed through a wooden gate which leads directly into the Courtyard. There is an Entrance Porch with storage which opens into the spacious and bright Living/Dining room with patio doors leading out into the Courtyard Garden - a side aspect window provides this space with lots of natural light. There is a large cupboard providing further storage - this area is open plan to the Kitchen which is fitted with a range of eye level and base units with roll edge granite effect worktops. There is a four ring gas hob with oven under and stainless steel extractor hood over. Along the Hallway are the Two Double Bedrooms, Bedroom Two with built-in storage and a modern recently re-fitted Bathroom.





Exterior

The private Courtyard Garden has been decked for low maintenance and would benefit from updating. There is a timber shed. Allocated Parking is provided.

Situation

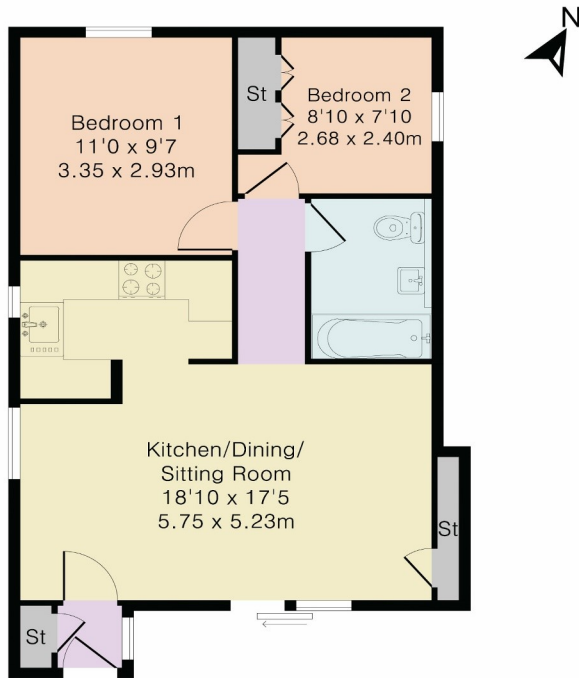
Marlow is a charming and historic town set in the banks of the River Thames and is surrounded by beautiful countryside. It is a perfect place for enjoying the river, shopping with a difference, walking around historical buildings or taking part in the many sports and recreational activities available within the local area. The railway station in Marlow provides access to London (Elizabeth Line and GWR) and access to the M4 and M40 is within a short drive. Excellent schools for children of all ages are available in Marlow and surrounding districts.

Directions

From the offices of **Simmons & Sons** Marlow turn right into Chapel Street. After the zebra crossing take the first turning on the right into Glade Road. Turn left into Victoria Road where number 41 can be found on the right. A representative of **Simmons & Sons** will meet you at the property.

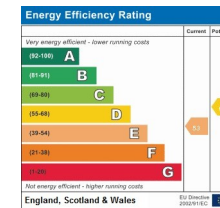


Approximate Gross Internal Area 555 sq ft – 52 sq m



Council Tax/Wycombe

Tax Band D



LEASE INFORMATION

Length of Lease: 53 Years (approx.) Remaining

Service Charge: £379 P.A.

Ground Rent: £50 P.A.

This information has been provided by the seller. Any buyer entering into negotiations should satisfy themselves with respect to these charges. Due to the length of the Lease, buyers are advised to consult with their Mortgage providers.

VIEWINGS - Strictly by appointment with:

Simmons & Sons

T: 01628 484353

E: sales@simmonsandsons.com



Although Pink Plan Ltd ensures the highest level of accuracy, measurements of doors, windows and rooms are approximate and no responsibility is taken for error, omission or misstatement. These plans are for representation purposes only as defined by RICS code of measuring practise. No guarantee is given on total square footage of the property within this plan. The figure icon is for initial guidance only and should not be relied on as a basis of valuation.



Simmons & Sons Surveyors LLP for themselves and for the vendors or lessors of the property whose agents they are give notice that: (i) the particulars are produced in good faith, are set out as a general guide only and do not constitute any part of a contract or offer; (ii) all descriptions, dimensions, references to condition and necessary permissions for use and occupation, and any other details are given in good faith and are believed to be correct, but any intending purchasers or tenants should not rely on them as statements or representations of fact but must satisfy themselves by inspection or otherwise as to the correctness of each of them; (iii) no person in the employment of Simmons & Sons Surveyors LLP has any authority to make or give any representation or warranty whatsoever in relation to this property.

sales • lettings & management • commercial • development • rural

32 Bell Street
Henley-on-Thames
Oxon
RG9 2BH
T: 01491 571111

1 High Street
Marlow
Bucks
SL7 1AX
T: 01628 484353

12 Wote Street
Basingstoke
Hants
RG21 7NW
T: 01256 840077

Peper Harow
The Estate Office
Godalming
GU8 6BQ
T: 01483 418151



GALLERY