

# HUNTERS<sup>®</sup>

HERE TO GET *you* THERE



## Acer Close

Warfield Park, RG42 3RF

Offers In Excess Of £325,000



Introducing Omar Suffolk Cottage, This charming and spacious 2-bedroom, 2-bathroom park home, perfectly set in the peaceful surroundings of Warfield Park. This 48ft by 20ft home offers a lovely blend of modern living and tranquil outdoor space. The open-plan kitchen and diner create a warm and welcoming heart of the home, ideal for family meals and entertaining. For added privacy, there is a large separate living room, perfect for relaxation.

The property includes a study, providing a quiet space for work or hobbies. Outside, you'll find a private, enclosed garden, a perfect retreat to enjoy the peaceful atmosphere of this sought-after location. With its serene setting and well-thought-out design, this park home promises comfort, style, and a relaxed lifestyle in a beautiful environment.

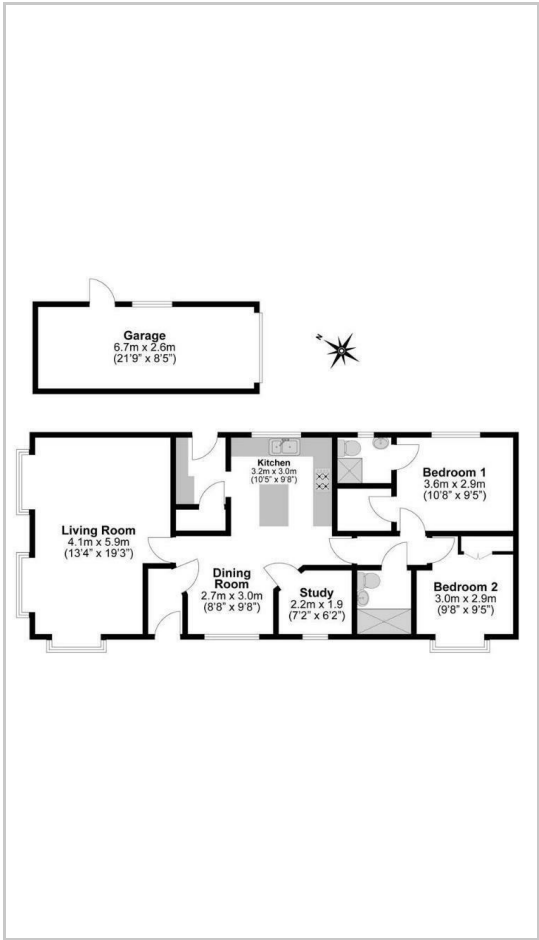




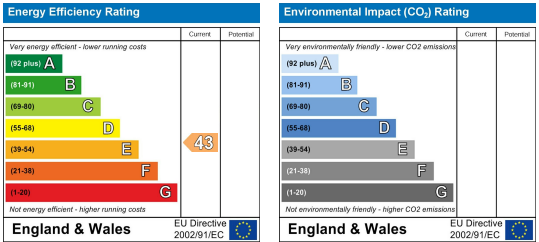
Area Map



Floor Plans



Energy Efficiency Graph



These particulars are intended to give a fair and reliable description of the property but no responsibility for any inaccuracy or error can be accepted and do not constitute an offer or contract. We have not tested any services or appliances (including central heating if fitted) referred to in these particulars and the purchasers are advised to satisfy themselves as to the working order and condition. If a property is unoccupied at any time there may be reconnection charges for any switched off/disconnected or drained services or appliances - All measurements are approximate.

**THINKING OF SELLING?** If you are thinking of selling your home or just curious to discover the value of your property, Hunters would be pleased to provide free, no obligation sales and marketing advice. Even if your home is outside the area covered by our local offices we can arrange a Market Appraisal through our national network of Hunters estate agents.