

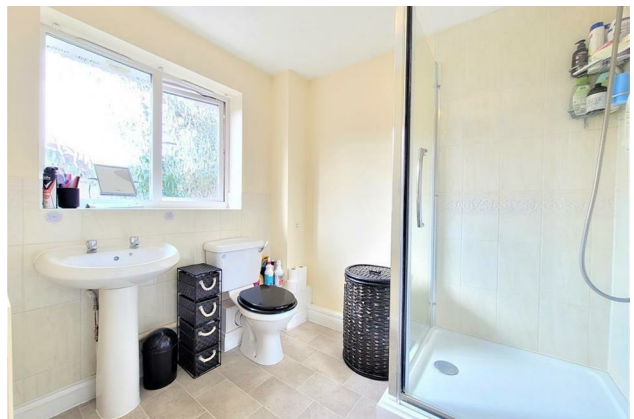
HUNTERS®

HERE TO GET *you* THERE

58 Rayner Drive, Arborfield, Reading, RG2 9FB

Offers In Excess Of £345,000

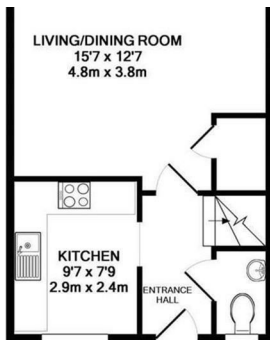
Property Images



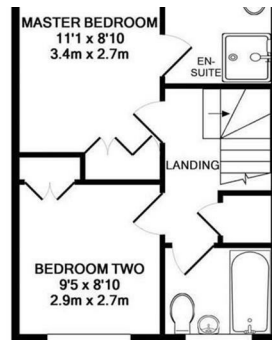
HUNTERS®

HERE TO GET *you* THERE

Property Images



GROUND FLOOR
APPROX. FLOOR
AREA 24E SQ FT



1ST FLOOR
APPROX. FLOOR
AREA 24E SQ FT

HUNTERS[®]

HERE TO GET *you* THERE

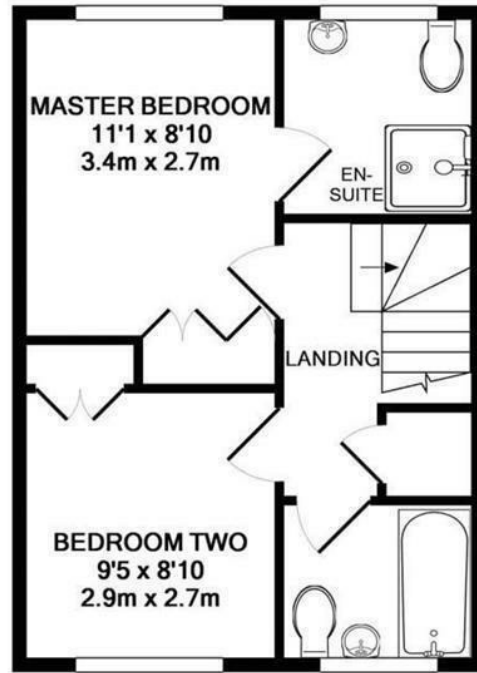
Property Images

HUNTERS®

HERE TO GET *you* THERE



GROUND FLOOR
APPROX. FLOOR
AREA 345 SQ.FT.
(32.1 SQ.M.)



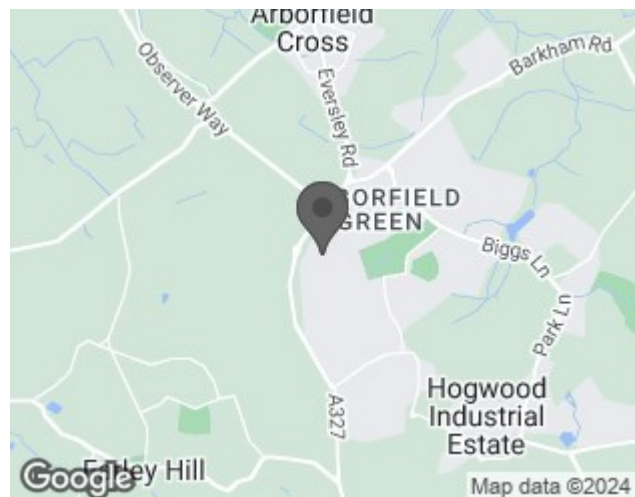
1ST FLOOR
APPROX. FLOOR
AREA 345 SQ.FT.
(32.1 SQ.M.)

TOTAL APPROX. FLOOR AREA 690 SQ.FT. (64.1 SQ.M.)
Measurements are approximate. Not to scale. Illustrative purposes only
Made with Metropix ©2016

EPC

Energy Efficiency Rating		Current	Potential
<i>Very energy efficient - lower running costs</i>			
(92 plus) A			87
(81-91) B			
(69-80) C		70	
(55-68) D			
(39-54) E			
(21-38) F			
(1-20) G			
<i>Not energy efficient - higher running costs</i>			
England & Wales		EU Directive 2002/91/EC	

Map



Details

Type: House - End Terrace Beds: 2 Bathrooms: 2 Receptions: 1 Tenure: Freehold

Summary

Hunters Wokingham are delighted bringing to the market this end of terrace property is situated in a quiet position and has two off road, allocated parking spaces. The downstairs accommodation comprises a modern kitchen overlooking the front garden, guest cloakroom and spacious living/dining room. French windows from the living room take you to the private and enclosed southerly facing rear garden with patio and side access. Upstairs you will find the two double bedrooms with en suite shower to the main bedroom. Both have built in wardrobes for storage saving solutions. The main bathroom is located at the end of the landing and is fitted with a bath.

Arborfield is a sought after location due to its peaceful atmosphere and its excellent schools - most notably the new Bohunt School. Set only a short distance from Wokingham town centre, mainline railway and a straightforward to drive in to Reading, with easy access to the M3 and M4 motorways, Arborfield has always been popular.

Features

- End-Terrace House
- Two double bedrooms
- Spacious living room with French doors
- Enslosed south facing garden
- Two bath rooms
- Modern kitchen
- Bohunt School catchment area
- Two allocated parking spaces
- Great location
- No onward chain