



Trinity Crescent, SW17

£425,000



- One Bedroom
- Open Plan Kitchen/Living
- Second Floor Flat
- Quiet Residential Road
- Communal Gardens
- 442 Sq. Ft.





ABOUT THE PROPERTY

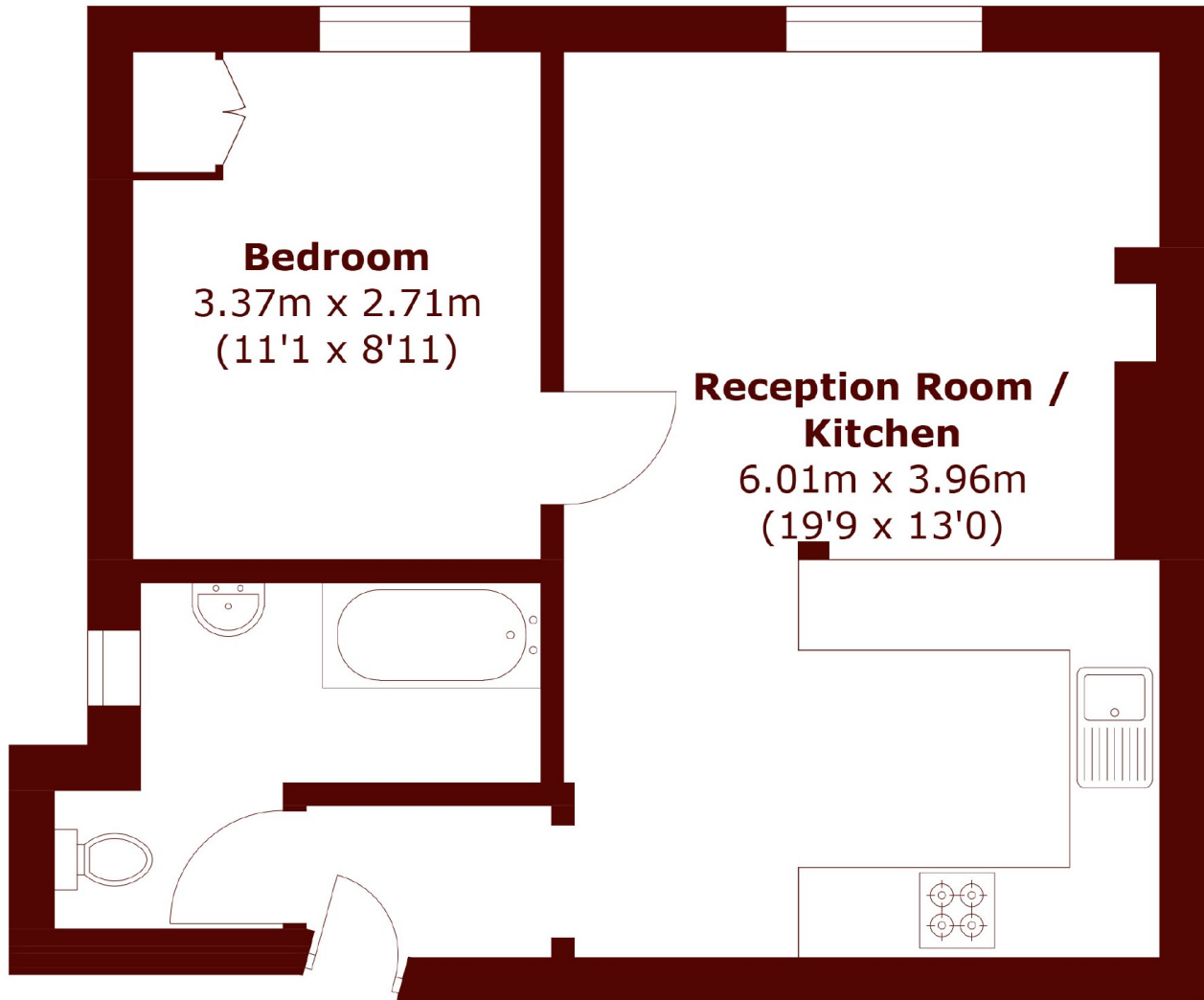
A spacious one bedroom flat set on the second floor of a beautiful double fronted Victorian property, situated on a quiet residential road in Tooting Bec.

A lovely second floor, one-bedroom apartment located on a beautiful tree-lined street between Balham and Tooting Bec. This property is presented in great condition throughout and offers a large open plan kitchen/living room which features a fully fitted peninsula. Neat wooden flooring flows through the kitchen, dining room and into the spacious double bedroom. Completing this property is a family bathroom and access to communal gardens.



The property is ideally located for access to Wandsworth Common and amenities of Tooting Bec and Bellevue Road. Local transport links include Tooting Bec Underground (Northern line, Zone 3) and local bus routes providing excellent access into the City.





Total area (approx.): 41.1 sq. m (442.4 sq. ft)

Marsh & Parsons Tooting
29-31 Upper Tooting Road,
London, SW17 7TS
020 8767 3655

We aim to make our particulars both accurate and reliable. However, they are not guaranteed; nor do they form part of an offer or contract. If you require clarification on any points then please contact us, especially if you're traveling some distance to view. Please note that appliances and heating systems have not been tested and therefore no warranties can be given as to their good working order.