



Caithness Road, CR4

£650,000



- Four Bedrooms
- Private Garden

- Close to Tooting Overground
- Three Floors

- Open Plan Kitchen/Dining
- 1,444 Sq. Ft.





ABOUT THE PROPERTY

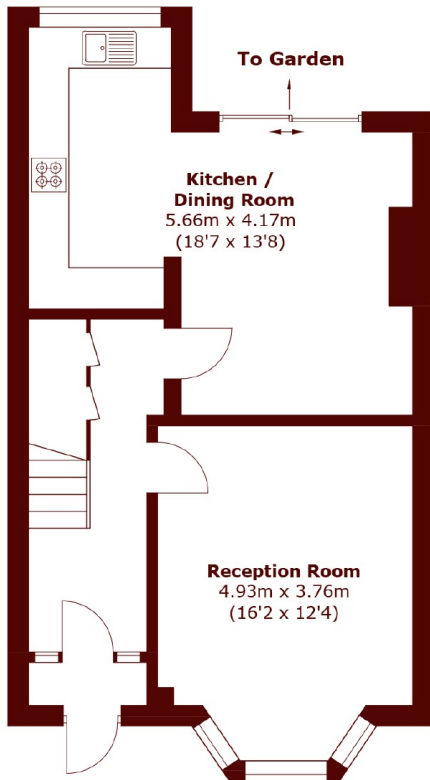
A spacious four bedroom home, with a large private garden ideally located close to Tooting Overground Station.

This property comes to the market split over three levels. The ground floor accommodates the reception room towards the front of the home which benefits from a large bay window allowing light to flood the interior. Also on this floor is the spacious eat in kitchen/dining area which has sliding doors that lead you towards the private garden. Three bedrooms can be found on the first floor, two of which are spacious double bedrooms, a third bedroom ideal as a nursery or a study and the family bathroom. A unique feature of this property is the third floor which has been designed as a master bedroom occupying the whole floor, with a second bathroom also on this level.

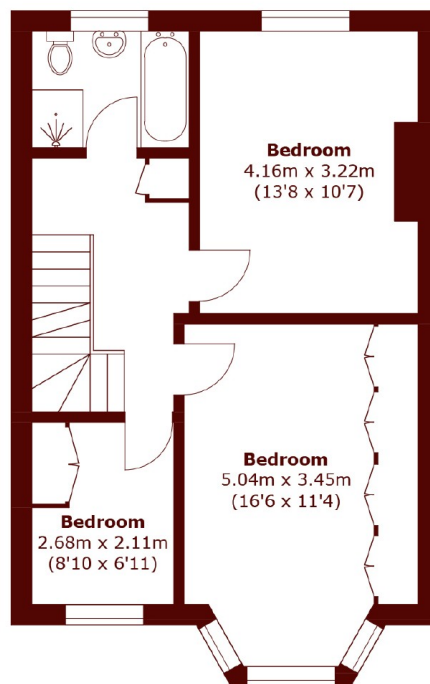


Caithness road is ideally located within walking distance of Mitcham Lane, where a plethora of local amenities can be found. Tooting overground is within walking distance allowing frequent access into the city. There is also access into Victoria from Mitcham Eastfields and further transport links can be found at Streatham common station. Regular buses can be found at the bottom of Caithness road which can take

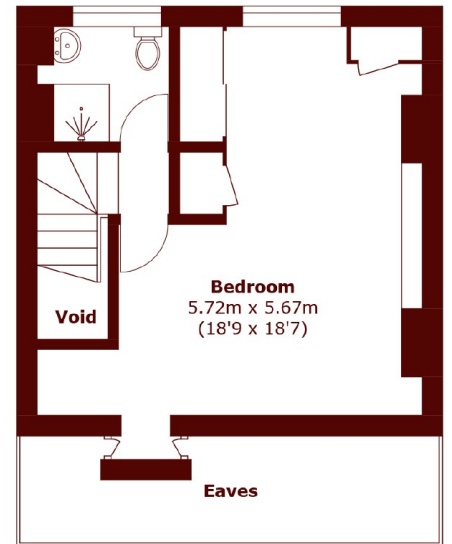




Ground Floor



First Floor



Second Floor

Total area (approx.): 134.2 sq. m (1,444.3 sq. ft)
(Excluding Void / Eaves)

Marsh & Parsons Tooting
29-31 Upper Tooting Road,
London, SW17 7TS
020 8767 3655

We aim to make our particulars both accurate and reliable. However, they are not guaranteed; nor do they form part of an offer or contract. If you require clarification on any points then please contact us, especially if you're traveling some distance to view. Please note that appliances and heating systems have not been tested and therefore no warranties can be given as to their good working order.