



## Sellincourt Road, SW17

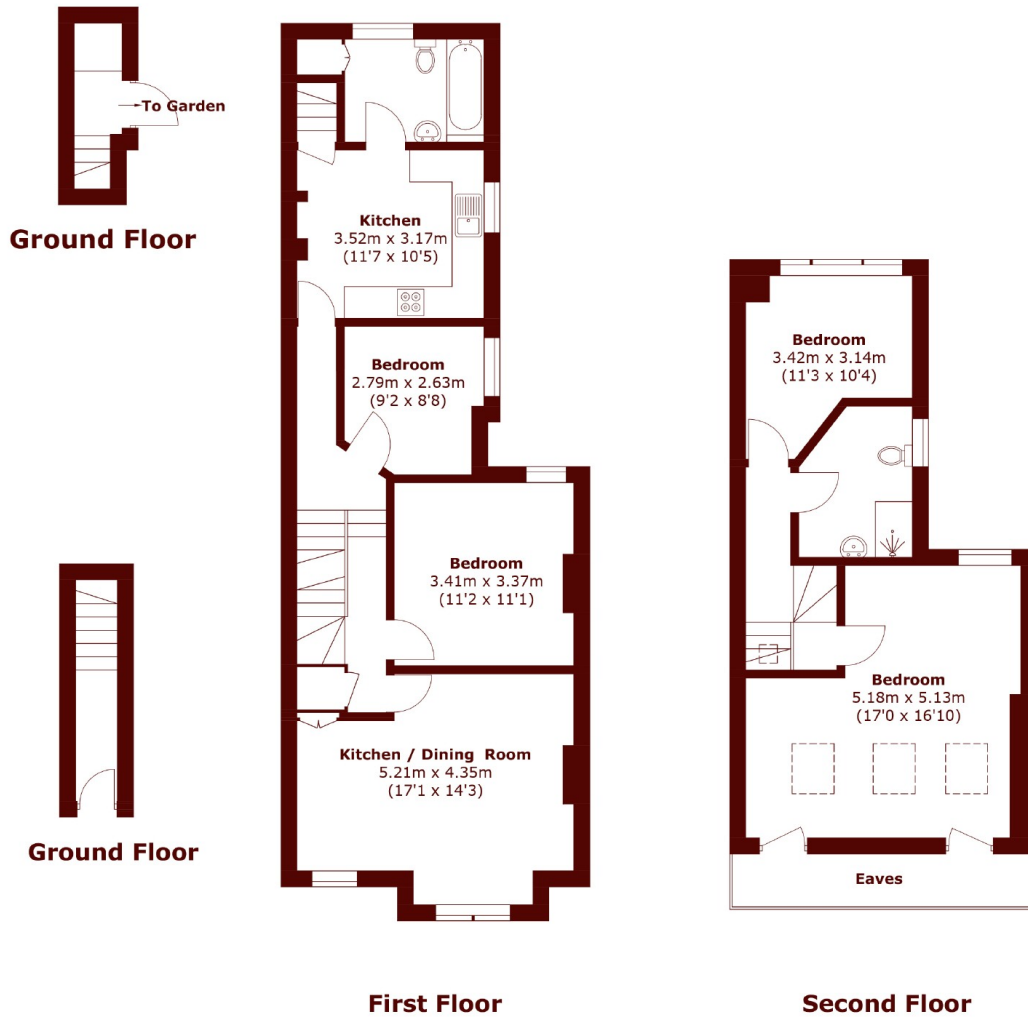
£750,000



- Four Bedrooms
- Two Bathrooms

- Split Level Maisonette
- Private South Facing Garden

- Great Transport Links
- 1277 Sq. Ft.



Total area (approx.): 118.6 sq. m (1,276.6 sq. ft)  
(Excluding Eaves)

## Marsh & Parsons Tooting

29-31 Upper Tooting Road,  
London, SW17 7TS  
020 8767 3655