



Avoca Road, SW17

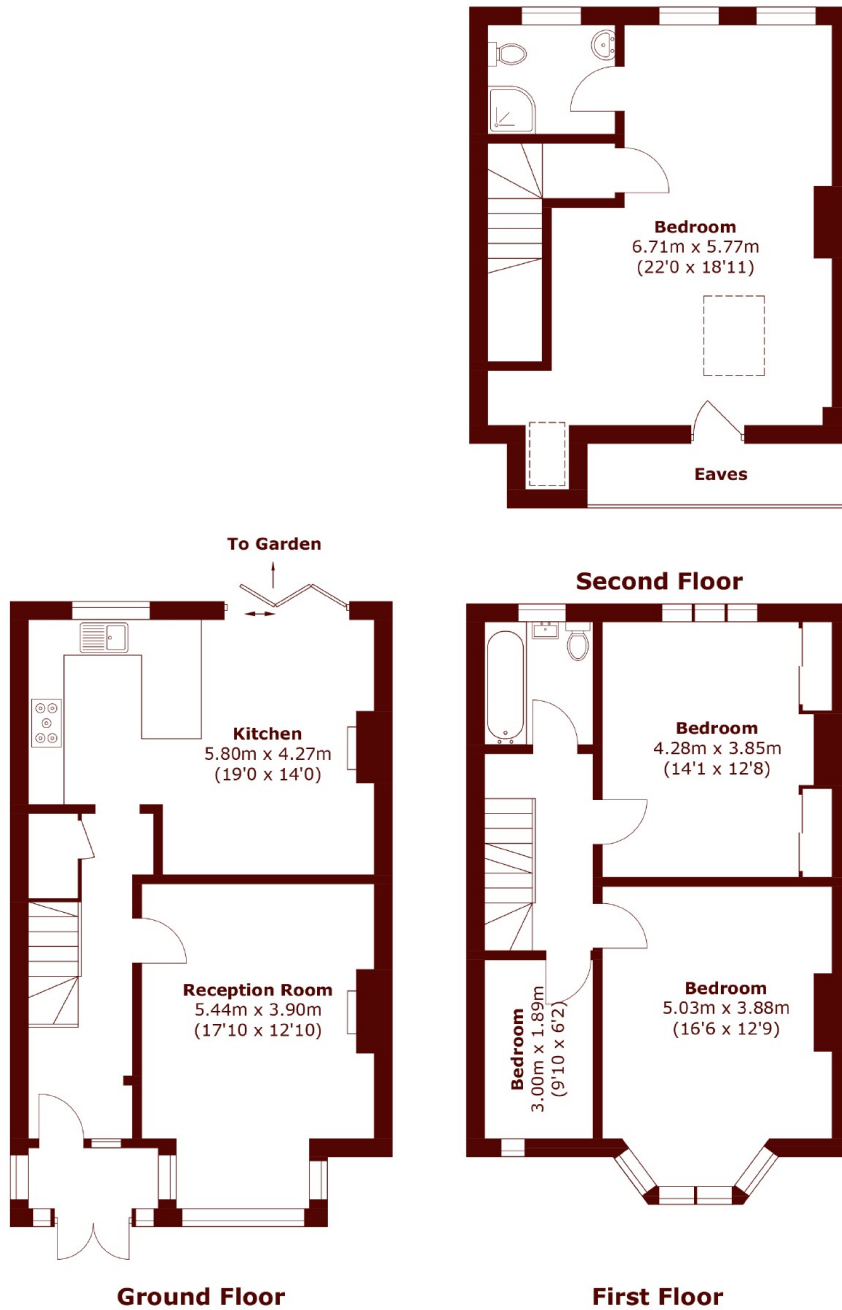
£1,100,000



- Four Bedrooms
- Private Garden

- Off Street Parking
- Freehold

- Close to Tooting Common
- 1593 Sq. Ft.



Total area (approx.): 148.0 sq. m (1,593.0 sq. ft)

Marsh & Parsons Tooting

29-31 Upper Tooting Road,
London, SW17 7TS
020 8767 3655