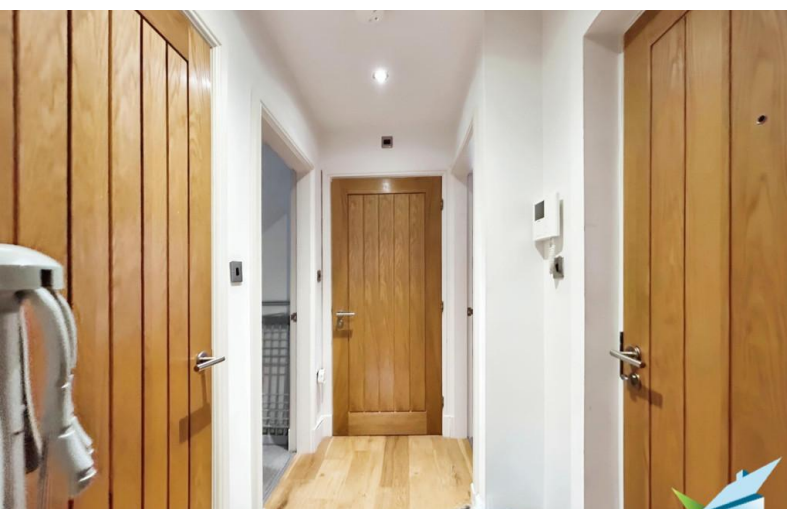


SOLD STC



St Johns House, Andrew Street

2 Bedrooms, 2 Bathroom, Apartment

£145,000

MARTIN&CO



St Johns House, Andrew Street

2 Bedrooms, 2 Bathroom

£145,000

- SOLD WITH TENANTS IN SITU
- MODERN & STYLISH
- SECOND FLOOR LUXURY APARTMENT
- HIGHLY REGARDED CENTRAL LOCATION

ENTRANCE HALL Having wooden flooring, down lights to ceiling, Video Intercom Entry System, storage cupboard off housing the hot water cylinder, wider than average Oak doors leading to Lounge/Diner, Bedrooms One and Two and Main Bathroom/WC.

LOUNGE/DINER 13' 1" x 12' 7" (3.99m x 3.84m) maximum measurement Having two double glazed Sash Windows, wall mounted Electric heater, continuing wooden flooring, down lights to ceiling, room for a dining table and chairs, being open through to the Kitchen area.

KITCHEN AREA 10' x 7' 11" (3.05m x 2.41m) Having an ample range of black high gloss fitted wall, base units and drawers with contrasting counter tops incorporating a stainless steel, circular bowl, circular drainer sink unit and mixer tap, Four ring electric hob and built under oven with stainless steel extractor hood over, Integrated Fridge, Freezer, Washer/Dryer and Dishwasher, continuing wooden flooring, floor to ceiling double glazed feature window, part tiled to counter tops, under unit lighting, down lights to ceiling.

MASTER BEDROOM 10' 4" x 9' 0" (3.15m x 2.74m) maximum measurement Wall mounted electric heater, double glazed Sash window, Door to en suite shower room/WC

ENSUITE SHOWER ROOM/WC Double sized shower enclosure with sliding glass door entry, Circular Sink, Low flush WC with concealed cistern, shaver point, Fully tiled to floor and walls to compliment the suite, Chrome electric towel radiator, extractor, Large fitted Vanity Mirror.

BEDROOM TWO 11' 10" x 9' 7" (3.61m x 2.92m) Wall mounted electric heater, Two double glazed Sash windows





MAIN BATHROOM/WC Combined three piece white suite comprising rectangular bath with shower over and bi fold glass screen, circular wash basin and mixer tap, low flush WC with concealed cistern, shaver point, extractor, fully tiled to floor and walls, double glazed obscure opening window, Chrome electric towel radiator.





%epcGraph_c_1_210%



Floor Plan

Floor area 95.8 m² (1,031 sq.ft.)

TOTAL: 95.8 m² (1,031 sq.ft.)

This floor plan is for illustrative purposes only. It is not drawn to scale. Any measurements, floor areas (including any total floor area), openings and orientations are approximate. No details are guaranteed, they cannot be relied upon for any purpose and do not form any part of any agreement. No liability is taken for any error, omission or misstatement. A party must rely upon its own inspection(s). Powered by www.Propertybox.io

Martin & Co Wakefield

52 Northgate • Wakefield • WF1 3AN
T: 01924 201457 • E: wakefield@martinco.com

01924 201457

<http://www.martinco.com>



Accuracy: References to the Tenure of a Property are based on information supplied by the Seller. The Agent has not had sight of the title documents. A Buyer is advised to obtain verification from their Solicitor. Items shown in photographs including but not limited to carpets, fixtures and fittings are not included unless specifically mentioned within the sales particulars. They may however be available by separate negotiation. Buyers must check the availability of any property and make an appointment to view before embarking on any journey to see a property. No person in the employment of the agent has any authority to make any representation about the property, and accordingly any information given is entirely without responsibility on the part of the agents, sellers(s) or lessors(s). Any property particulars are not an offer or contract, nor for part of one. **Sonic / Laser Tape:** Measurements taken using a sonic / Laser tape measure may be subject to a small margin of error. **All Measurements:** All Measurements are Approximate. **Services Not tested:** The Agent has not tested any apparatus, equipment, fixtures and fittings or services and so cannot verify that they are in working order or fit for the purpose. A Buyer is advised to obtain verification from their Solicitor or Surveyor.