

SOLD STC



MARTIN&CO



Dodworth Drive, Kettlethorpe

2 Bedrooms, 1 Bathroom, Semi-Detached House

£165,000

MARTIN&CO



Dodworth Drive, Kettlethorpe

2 Bedrooms, 1 Bathroom

£165,000

- No On Ward Chain
- Two Bedroom Semi Detached
- Driveway Parking
- Front and Rear Gardens
- Ideal For First Time Buyer / Investor

Martin and Co - Wakefield, are pleased to bring to the market this well presented and spacious two bedroom semi detached property. Offered with no ONWARD chain.

The property comprises; an entrance hallway with stairs leading to the first floor, a good-sized living room to the front aspect and an attractive modern kitchen/dining area, conservatory with french door to the rear access to the garden. The first floor offers two double bedrooms and a modern three-piece family bathroom.

LIVING ROOM 14' 3" x 14' 3" (4.35m x 4.36m) Large living room area with uPVC window, gas heating radiator and a electric heater.

KITCHEN/BREAKFAST ROOM 17' 5" x 7' 0" (5.33m x 2.15m) L shaped kitchen with Stainless steel sink with single drainer, useful under stairs storage area, plumbing for automatic washing machine and dishwasher, cooker, uPVC window. with door leading to the conservatory

CONSERVATORY 12' 1" x 9' 1" (3.7m x 2.77m) Lovely size conservatory with gas central heated radiator, laminate flooring and french doors leading to the rear garden

FIRST FLOOR

BEDROOM ONE Large double bedroom with storage area in the corner. Central heating radiator and a uPVC window

BEDROOM TWO 9' 7" x 11' 10" (2.93m x 3.61m) Large double bedroom with central heating radiator and a uPVC window

BATHROOM 7' 6" x 5' 5" (2.3m x 1.66m) Modern style

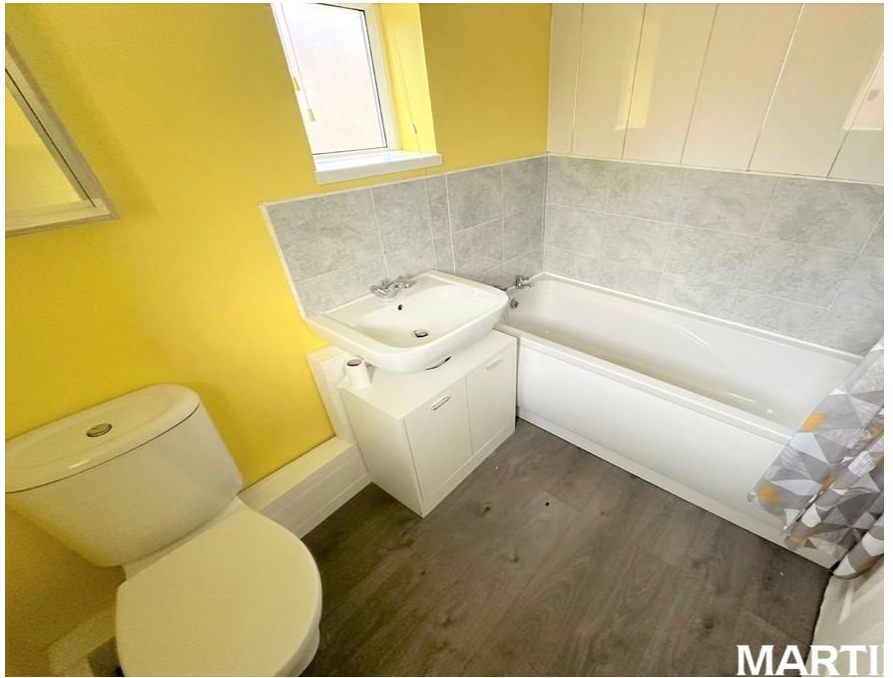




bathroom with dual flush W.C, central heating radiator and two uPVC windows to the front and side. Electric shower over bath with a glass shower screen.

EXTERNAL To the front of the property, there is driveway parking for multiple vehicles with a lawned front garden, hedged border. This leads to an enclosed rear garden laid mainly to lawn with wooden fenced and hedged boundaries. There is also a paved patio area - ideal for outdoor dining in the warmer months and a really useful out door storage shed.





%epcGraph_c_1_441%



Martin & Co Wakefield

52 Northgate • Wakefield • WF1 3AN
T: 01924 201457 • E: wakefield@martinco.com

01924 201457

<http://www.martinco.com>



Accuracy: References to the Tenure of a Property are based on information supplied by the Seller. The Agent has not had sight of the title documents. A Buyer is advised to obtain verification from their Solicitor. Items shown in photographs including but not limited to carpets, fixtures and fittings are not included unless specifically mentioned within the sales particulars. They may however be available by separate negotiation. Buyers must check the availability of any property and make an appointment to view before embarking on any journey to see a property. No person in the employment of the agent has any authority to make any representation about the property, and accordingly any information given is entirely without responsibility on the part of the agents, sellers(s) or lessors(s). Any property particulars are not an offer or contract, nor for part of one. **Sonic / laser Tape:** Measurements taken using a sonic / laser tape measure may be subject to a small margin of error. **All Measurements:** All Measurements are Approximate. **Services Not tested:** The Agent has not tested any apparatus, equipment, fixtures and fittings or services and so cannot verify that they are in working order or fit for the purpose. A Buyer is advised to obtain verification from their Solicitor or Surveyor.