

SOLD STC



Colville Terrace, Thorpe

4 Bedrooms, 1 Bathroom, End Terraced House

£149,000

MARTIN&CO



Colville Terrace, Thorpe
4 Bedrooms, 1 Bathroom
£149,000

Martin and Co - Wakefield are pleased to bring to the market this deceptively spacious four bedroom end terrace home offered with No Onward Chain. The property comprises of the following: Lounge with upvc window, door to dining kitchen with a range of wall & base units, open staircase to the first floor with 2 bedrooms and family bathroom, further stairs to 2 further bedrooms.

Externally the property has a front garden area and an enclosed rear yard. Close to the motorway network and good public transport links.

- No Onward Chain
- Four Double Bedroom House
- End Terraced
- Set Over Two Floors
- Spacious Lounge

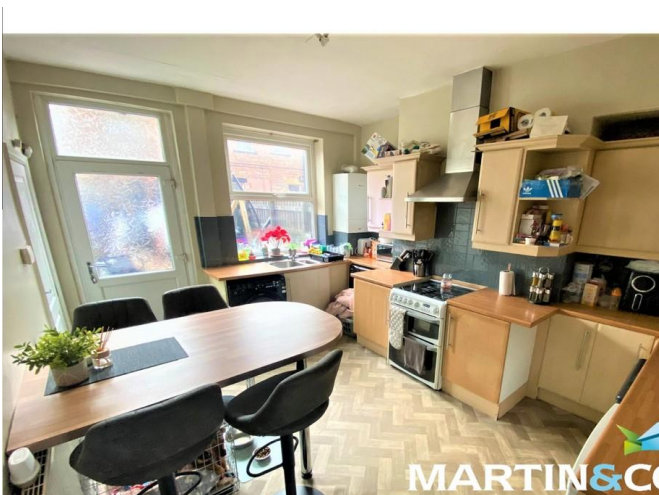
LOUNGE 14' 5" x 12' 4" (4.41m x 3.76m) uPVC double glazed door and window to the front, gas central heating radiator and decorative fireplace. Door leading through to the kitchen.

KITCHEN/DINER 13' 11" x 10' 9" (4.25m x 3.28m) Has a fully fitted kitchen with a range of wall and base mounted units with complementary work surfaces over, incorporating sink and drainer, part tiled walls, free standing cooker, space for undercounted fridge & freezer and washing machine, under stairs storage, uPVC double glazed window and door to the rear. Door way leading to the staircase.

FIRST FLOOR LANDING Access to bedrooms two and three and house bathroom. Stairs leading to the second floor.

BEDROOM FOUR 7' 2" x 16' 9" (2.19m x 5.11m) uPVC double glazed window to the rear, gas central heating radiator

BEDROOM THREE 14' 6" x 10' 2" (4.42m x 3.12m) uPVC double glazed window to the front, gas central heating radiator.





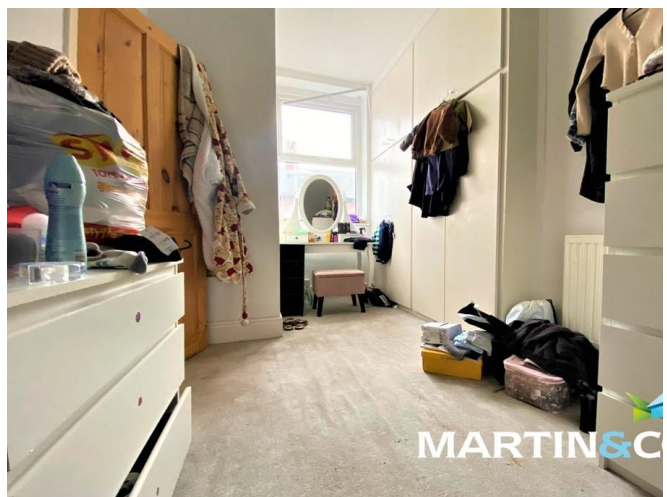
BATHROOM 3' 11" x 8' 3" (1.2m x 2.52m) A three piece bathroom suite comprising of shower enclosure, low level flush WC, wash hand basin, part tiled walls, gas central heating radiator, frosted uPVC double glazed window to the rear.

SECOND FLOOR

BEDROOM TWO 8' 5" x 13' 2" (2.59m x 4.02m) Restricted head height due to the attic ceiling, but only on one side. Double glazed velux window and gas central heated radiator.

BEDROOM ONE 14' 6" x 12' 11" (4.42m x 3.95m) Spacious master bedroom with exposed floor boards and beams to the ceiling, double glazed window to the front and gas central heated radiator.

EXTERIOR Enclosed rear yard with surround fencing, front garden and on street parking





%epcGraph_c_1_441%



MARTIN&CO



MARTIN&CO

Martin & Co Wakefield

52 Northgate • Wakefield • WF1 3AN
T: 01924 201457 • E: wakefield@martinco.com

01924 201457

<http://www.martinco.com>



Accuracy: References to the Tenure of a Property are based on information supplied by the Seller. The Agent has not had sight of the title documents. A Buyer is advised to obtain verification from their Solicitor. Items shown in photographs including but not limited to carpets, fixtures and fittings are not included unless specifically mentioned within the sales particulars. They may however be available by separate negotiation. Buyers must check the availability of any property and make an appointment to view before embarking on any journey to see a property. No person in the employment of the agent has any authority to make any representation about the property, and accordingly any information given is entirely without responsibility on the part of the agents, sellers(s) or lessors(s). Any property particulars are not an offer or contract, nor for part of one. **Sonic / laser Tape:** Measurements taken using a sonic / laser tape measure may be subject to a small margin of error. **All Measurements:** All Measurements are Approximate. **Services Not tested:** The Agent has not tested any apparatus, equipment, fixtures and fittings or services and so cannot verify that they are in working order or fit for the purpose. A Buyer is advised to obtain verification from their Solicitor or Surveyor.