



www.ultraestates.co.uk

enquiries@ultraestates.co.uk

Tel : 020 7723 4288

Fax: 020 7723 4694

ULTRA ESTATES

Sales, Lettings, Management

11 LUKE HOUSE, 3 ABBEY ORCHARD STREET, LONDON, SW1

£795 pw / £3,445 pm Subject To Contract

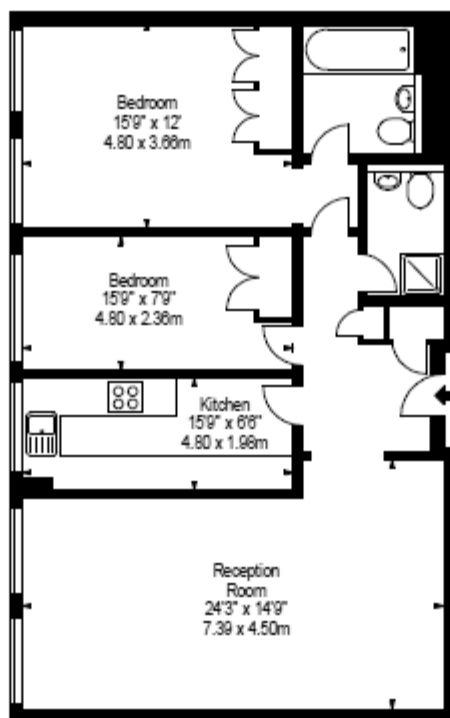


This large, (89 sq. meter) bright and spacious two-bedroom apartment is on the sixth floor and is located in the heart of Victoria. The apartment has a large bright bedroom with a spacious reception area, plenty of storage space, fully fitted kitchen and 2 modern bathrooms. The apartment comes with free wifi and is set up for a Sky subscription. Luke House offers an excellent variety of 30 newly refurbished studio, one and two-bedroom apartments, situated on the upper floors of this purpose-built development building, offering flexible accommodation to suit all requirements. The building has a dedicated building manager, secure underground parking, wifi, laundry room and lift service. Centrally located in Westminster, just off Victoria Street, Luke House is surrounded by shops, bars and restaurants, as well as giving easy access to the rest of the city. Residents of Luke House have easy access to some of the capital's best-known historic sights -- including Buckingham Palace, the Houses of Parliament and Westminster Abbey. It is a 5-minute walk to St James's Park tube station (District line) and to Victoria tube and train station (Victoria line & Gatwick Express).

2 Bedrooms : En Suite Bathroom : Shower Room : Reception Room : Kitchen : Lift : Parking : EPC Rating C

For more information please contact Ultra Estates
61 Rossmore Road, London NW1 6RB





Approx Gross Internal Area*

957 Sq Ft - 88.91 Sq M

Illustration For Identification Purposes Only. Not to Scale

BKR

london@bkrfloorplans.co.uk

T: 0846 267 2028

www.bkrfloorplans.co.uk

2010

Fees and Charges

UPFRONT PAYMENTS/FEEES FOR LETTING THIS PROPERTY, IF IT IS AN AST LETTING, CONSIST ONLY OF THE RENT TENANCY DEPOSIT AND ANY AGREED HOLDING DEPOSIT (IF APPLICABLE). FOR A LIST OF ADMINISTRATIVE PAYMENTS AND FEES APPLICABLE TO ALL OTHER LETTINGS, PLEASE CONTACT US FOR FURTHER INFORMATION.

Energy Efficiency Rating

