



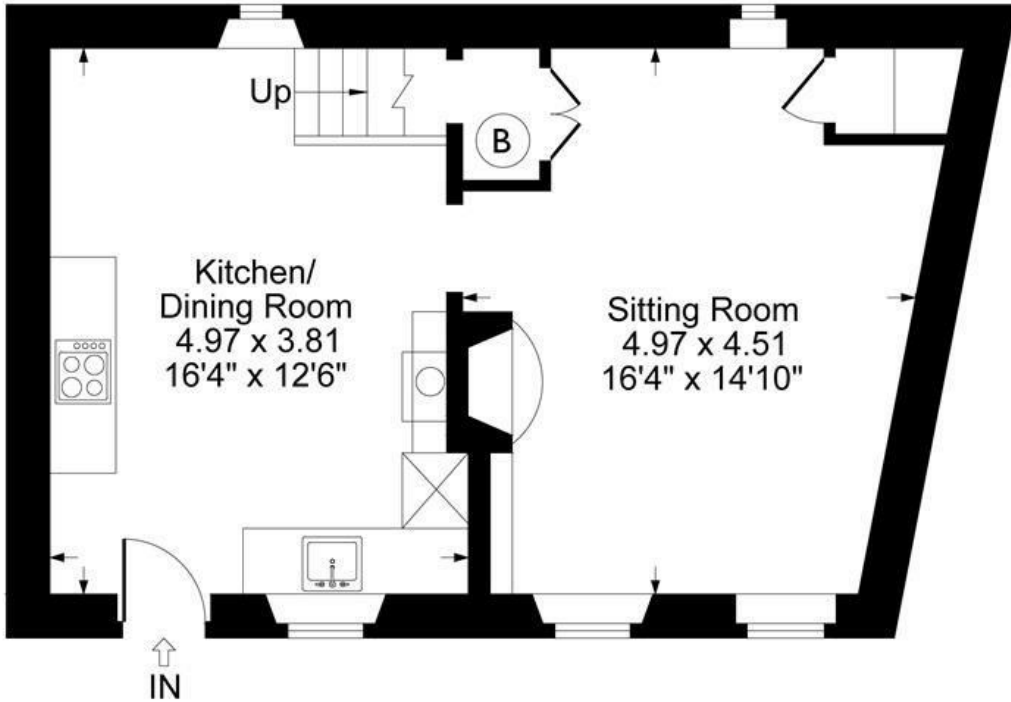
FAIRFAX
— & Co —
ESTATE AGENTS

Chapel Lane, Enstone, OX7

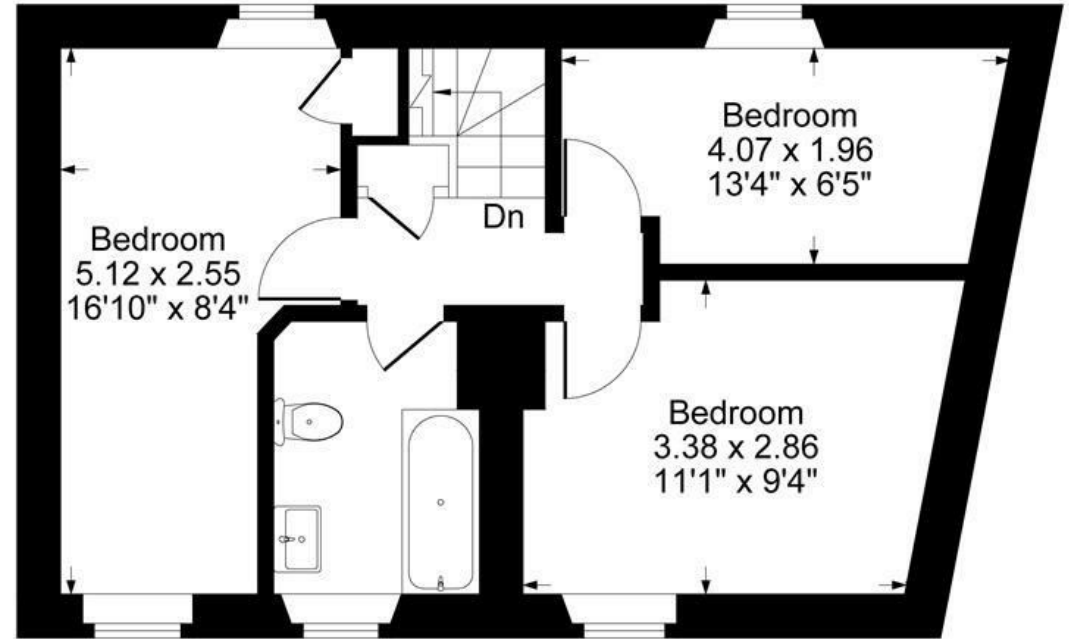


Approximate Gross Internal Area
Ground Floor = 38.96 sq m / 419 sq ft
First Floor = 40.57 sq m / 437 sq ft
Total Area = 79.53 sq m / 856 sq ft

Illustration for identification purposes only,
measurements are approximate, not to scale.



Ground Floor



First Floor

The Property

This charming three-bedroom cottage offers a delightful blend of rustic character and modern comfort. Set in the popular village of Enstone, the property features a front terrace, perfect for outdoor seating and enjoying the surroundings.

Step through the porch into the kitchen, equipped with an oven, space for a washing machine, fridge freezer, and a traditional Rayburn cooker. The light and airy living room is a lovely space, complete with a fireplace, two charming window seats, built-in shelving, and a generous storage cupboard.

Upstairs, accommodation comprises of three well-proportioned bedrooms, and a family bathroom with a shower over the bath. There's also a handy linen cupboard on the landing for extra storage.

Outside

Outside, the property benefits from off-road parking, making it both practical and idyllic for village living.

Situation

Enstone, set in the scenic north Oxfordshire countryside, offers a village shop, post office, pub, and primary school. Nearby Chipping Norton and Woodstock provide more amenities, while Banbury and Oxford offer extensive shopping and leisure. Soho Farmhouse is just 5 miles away, and Daylesford Organic Farm Shop is 10 miles away. Mainline trains from Charlbury (4 miles) reach London Paddington in about 70 minutes, with other services from Banbury and Oxford Parkway. A bus service connects Enstone to Oxford and Chipping Norton. Local schools include Enstone Primary, Chipping Norton School, and several independent options.





1 Church Street
Charlbury
Oxfordshire
OX7 3PW
Telephone: 01608 811146

10 Market Place
Chipping North
Oxfordshire
OX7 5NA
Telephone: 01608 644808