

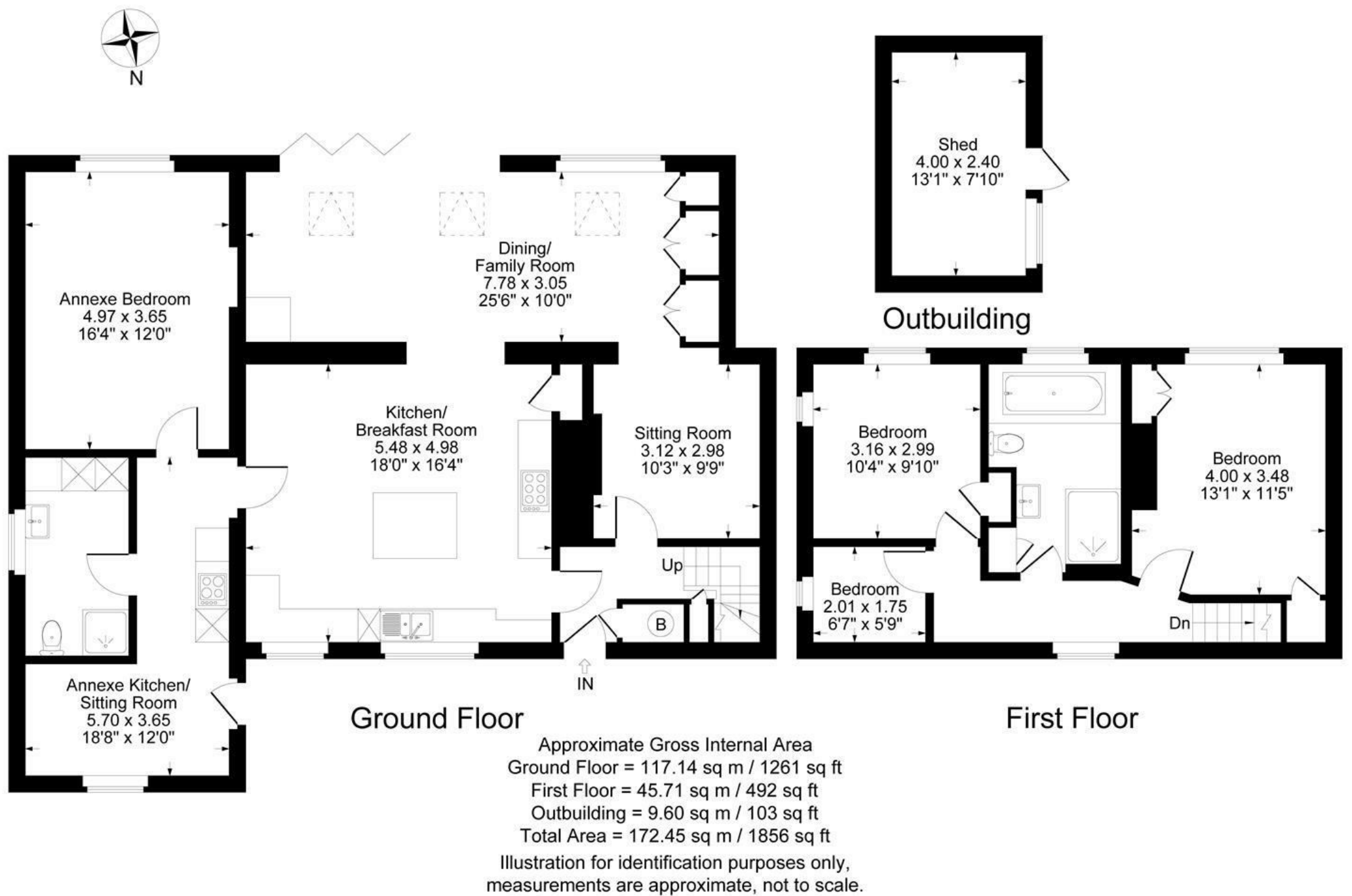
10 Market Place
Chipping Norton
Oxfordshire
OX7 5NA
Telephone: 01608 644808

1 Church Street
Charbury
Oxfordshire
OX7 3PW
Telephone: 01608 811146



FAIRFAX
— & Co —
ESTATE AGENTS

Great Tew, Chipping Norton, Oxfordshire



SITUATED ON THE EDGE OF THE SOUGHT AFTER VILLAGE OF GREAT TEW, THIS THREE/FOUR BEDROOM FAMILY HOME LOOKS OUT OVER STUNNING VIEWS OF OXFORDSHIRE FROM BOTH THE FRONT OF THE PROPERTY AND OUT OVER THE LAWNED, SOUTH FACING REAR GARDEN. WITH OFF STREET PARKING AND AN ANNEXE THIS PROPERTY WAS REFURBISHED TO A HIGH STANDARD IN 2019.

The Property

The ground floor entrance hall, which benefits from under stairs storage, leads into the spacious kitchen, appointed with large kitchen island, Quartz work tops, Butler sink, wine fridge and double windows looking out over the Oxfordshire countryside. Joining the kitchen is the open plan dining and family room, with natural light flooding through the bifold doors and opening on to the garden. Completing the ground floor is the cosy snug which boasts the second of two log burners.

The stairway to the first floor leads to two double bedrooms, a child's bedroom/office space and a large and luxurious family bathroom with cast iron roll top bath and separate shower.

Subject to planning, there is further potential to extend the house either above the existing annexe or into the loft.

Annexe

To the side of the property, with direct access from the kitchen or separate external access, is the annexe. Complete with a kitchenette and sitting room, bedroom and shower room this space can be used as a separate and contained living area for family members, tenants or as an air bnb opportunity.

Outside

To the front of the property is a gravelled driveway with off-street parking for three vehicles and an electric charging point.

To the rear is a well-proportioned south facing garden which is mainly laid to lawn with a decking area and large porcelain tiled terrace perfect for alfresco dining and barbecues with views and access over open fields.

Situation

The property is situated in the quintessential village of Great Tew. Locally there is the

popular café Quince and Clover, the Falkland Arms together with a busy community centre - Tew Centre - which is also home to the Great and Little Tew Cricket Club. Soho Farmhouse is within walking distance which has added to the appeal of the area, complementing the near-by Daylesford Organic Farm Shop.

Great Tew primary school is within walking distance, recently described as exceptional this is one of many great schooling options in the area, including Bloxham, Tudor Hall, Kitebrook, and Winchester House. The Oxford and Abingdon schools are also within reach.

The nearest railway stations are Charlbury, Bicester, Banbury and Oxford Parkway with direct access to London Paddington in just over an hour.

For further amenities, the bustling towns of Chipping Norton and Banbury are five and nine miles away, respectively.