

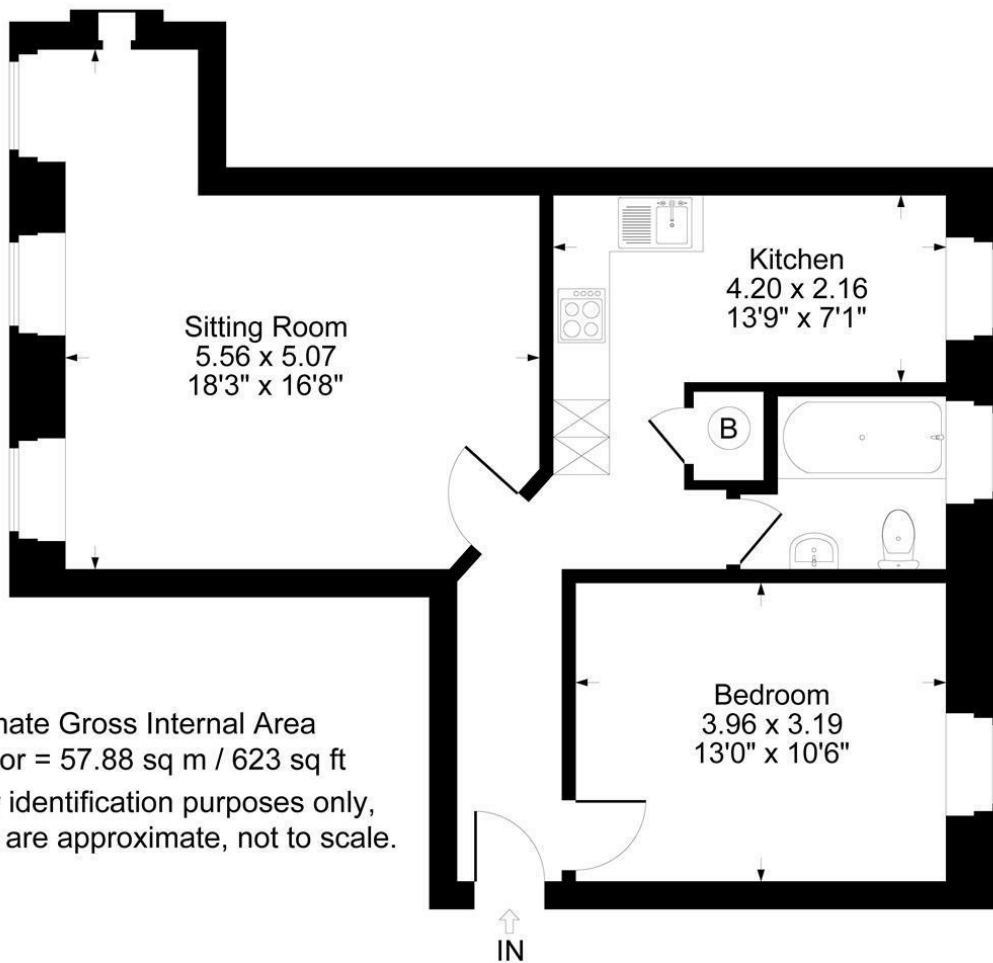
# Kings Head Court, Chipping Norton



**FAIRFAX**

— & Co —

ESTATE AGENTS



Approximate Gross Internal Area  
Ground Floor = 57.88 sq m / 623 sq ft  
Illustration for identification purposes only,  
measurements are approximate, not to scale.

Ground Floor

---

**FORMING PART OF A GRADE II LISTED COACHING INN A  
BEAUTIFULLY PRESENTED ONE BEDROOM FIRST FLOOR APARTMENT  
WITH CHARACTER FEATURES, SITUATED IN THE CENTRE OF  
CHIPPING NORTON.**

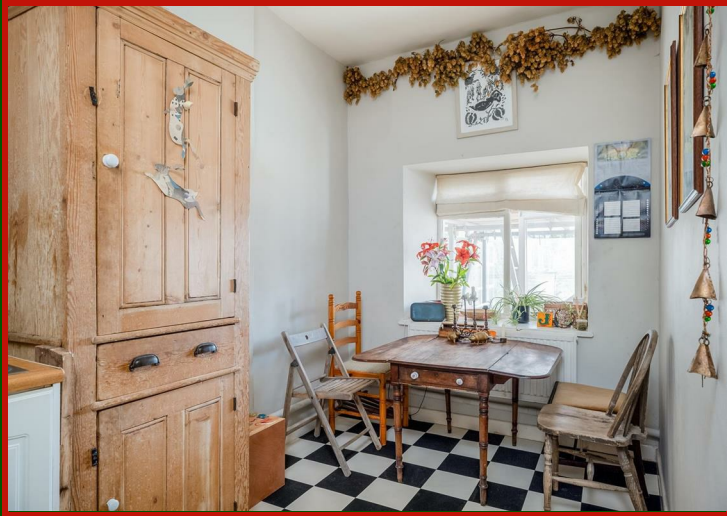
**The Property**

A lovely first floor one bedroom apartment situated in this elegant grade II listed town centre property. Accommodation comprises of Hallway, kitchen/dining room with good storage, living room with high ceilings and triple sash windows, one double bedroom and a bath/shower room. The apartment is serviced with gas central heating.

EPC rating: C. Council tax band: B, Tenure: Leasehold, Annual service charge

**Situation**

The bustling historic wool town of Chipping Norton is situated on the edge of the Cotswold Hills between the University City of Oxford, Spa town of Cheltenham & Shakespeare's Stratford upon Avon. It has a range of shopping, social and business facilities including an excellent local theatre, sports centre with indoor pool, lido and a Community Hospital + Health Centre. A Station on the Paddington to Worcester rail line can be found at nearby Kingham in addition to a regular bus service from Chipping Norton to Oxford.



**1 Church Street  
Charlbury  
Oxfordshire  
OX7 3PW  
Telephone: 01608 811146**

**10 Market Place  
Chipping Norton  
Oxfordshire  
OX7 5NA  
Telephone: 01608 644808**

Fairfax & Co is the trading style of Thomas Fairfax Limited  
Registered in England No 07074456 Registered Office: 30 St Giles, Oxford, OX1 3LE  
These particulars are offered on the understanding that all negotiations are conducted through this company. Neither these particulars nor oral representations form any part of any offer or contract, and their accuracy cannot be guaranteed