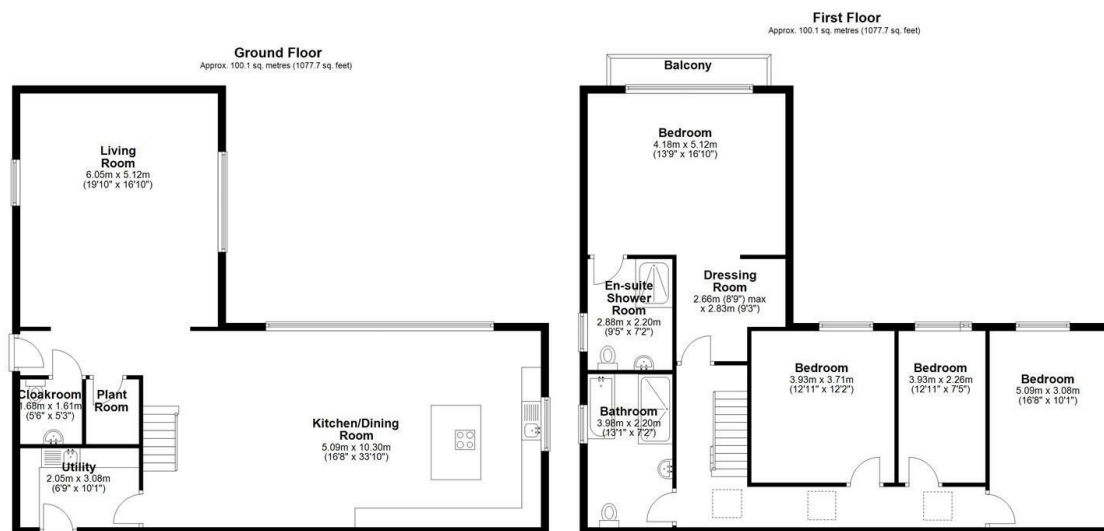




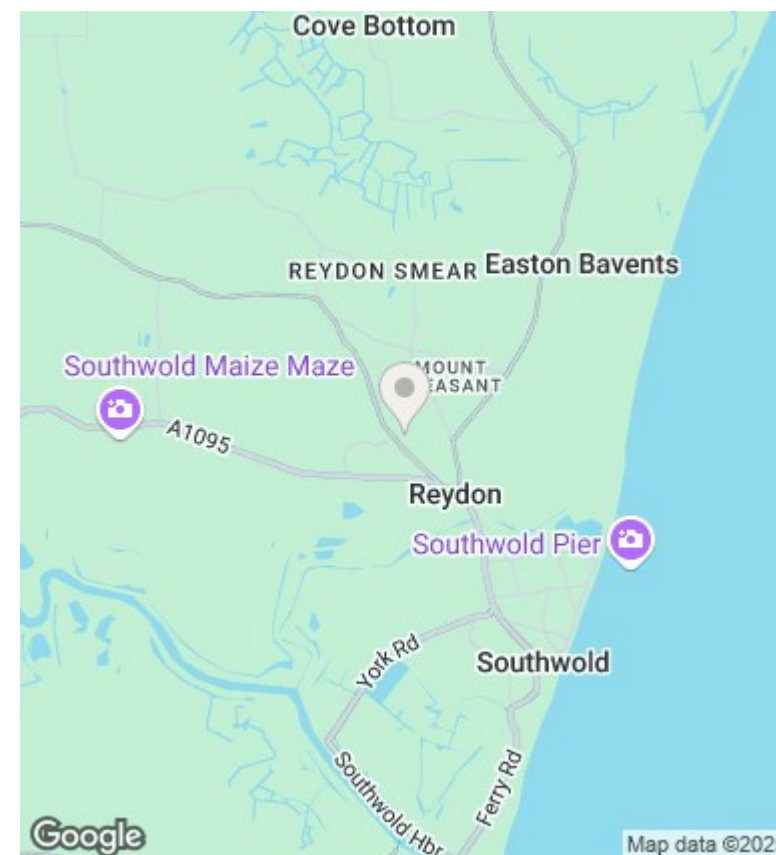
## Hillfield Court, Reydon

Guide Price £875,000

- Unique and High Quality New Home of £200 Sqm
- High Level of Energy Efficiency
- Large Principal Bedroom Suite
- Three Further Bedrooms
- South Facing Courtyard Garden
- Ample Off Road Parking
- Stunning Open Plan Kitchen/Living Room with Integrated Appliances
- Stylish Bathroom Suites
- EPC - Awaiting



Total area: approx. 200.2 sq. metres (2155.4 sq. feet)



## Conveyancing, Surveys & Financial Services

Flick & Son may refer clients to Jigsaw Mortgages Ltd for financial services, David James Wealth for wealth management, David Barney & Co and Fairweather Law for conveyancing and MS Surveys for property surveys. It is the clients decision whether to use these services however if the decision is made to proceed with these services it should be known that Flick & Son will receive a referral fee of 20% of case sizes for Jigsaw Mortgages Ltd and David James Wealth, £100 referral fee for David Barney & Co, £200 fee for Fairweather Law referrals and £50 referral fee for MS Surveys.

## Floorplans

These plans are for illustrative purposes only and should not be used for any other purpose by any prospective purchaser or any other party.

Energy Efficiency Rating		
	Current	Potential
Very energy efficient - lower running costs		
(92 plus) <b>A</b>		
(81-91) <b>B</b>		
(69-80) <b>C</b>		
(55-68) <b>D</b>		
(39-54) <b>E</b>		
(21-38) <b>F</b>		
(1-20) <b>G</b>		
Not energy efficient - higher running costs		
<b>England &amp; Wales</b>	EU Directive 2002/91/EC	

## Energy Efficiency Rating

The full energy performance certificate can be viewed online at the national EPC register at [www.epcregister.com](http://www.epcregister.com)