



19 Abbey Road  
Swineshead, Boston, PE20 3EN  
**£275,000**





# 19 Abbey Road

Swineshead, Boston, PE20 3EN

This beautifully updated four-bedroom detached home in the heart of Swineshead is ready to move straight into, with NO CHAIN. Thoughtfully renovated, it's ideal for families looking for both space and comfort.

Inside, a handy porch leads into a warm and inviting lounge with a bay window, patio doors, and a cosy log burner. The open-plan kitchen diner is perfect for everyday living and entertaining, with plenty of storage, integrated appliances, and a separate utility room with a WC.

Upstairs, you'll find four generously sized bedrooms and a stylish family bathroom with a waterfall shower and floor-to-ceiling tiling.

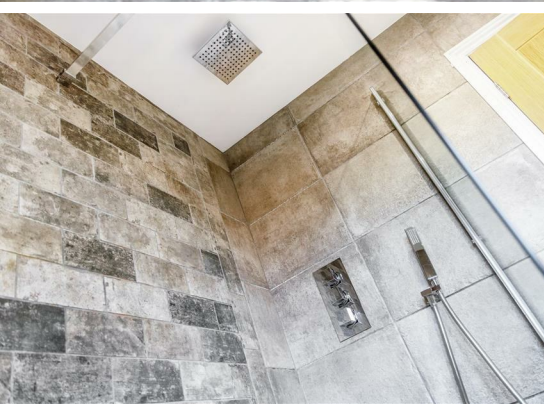
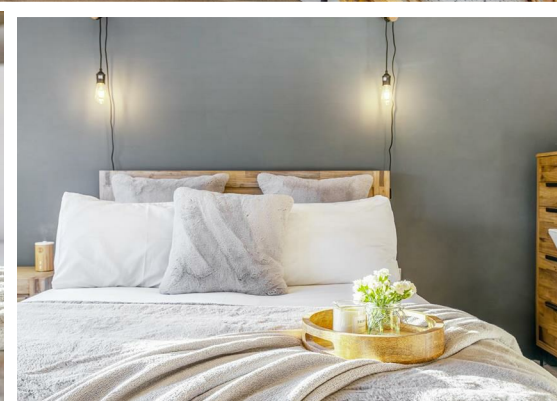
Outside, the low-maintenance garden is great for relaxing or hosting, with a patio, decking area, and hot tub. A block-paved driveway provides parking for at least four cars, along with a garage for extra storage.

Just a short walk from local schools, shops, and transport links—this lovely home is definitely worth a look. Book your viewing today!

Section 21 of the Estate Agents Act 1979 applies in this instance, as one of the sellers is associated/related to Bruce Mather Limited or is an Estate Agent.

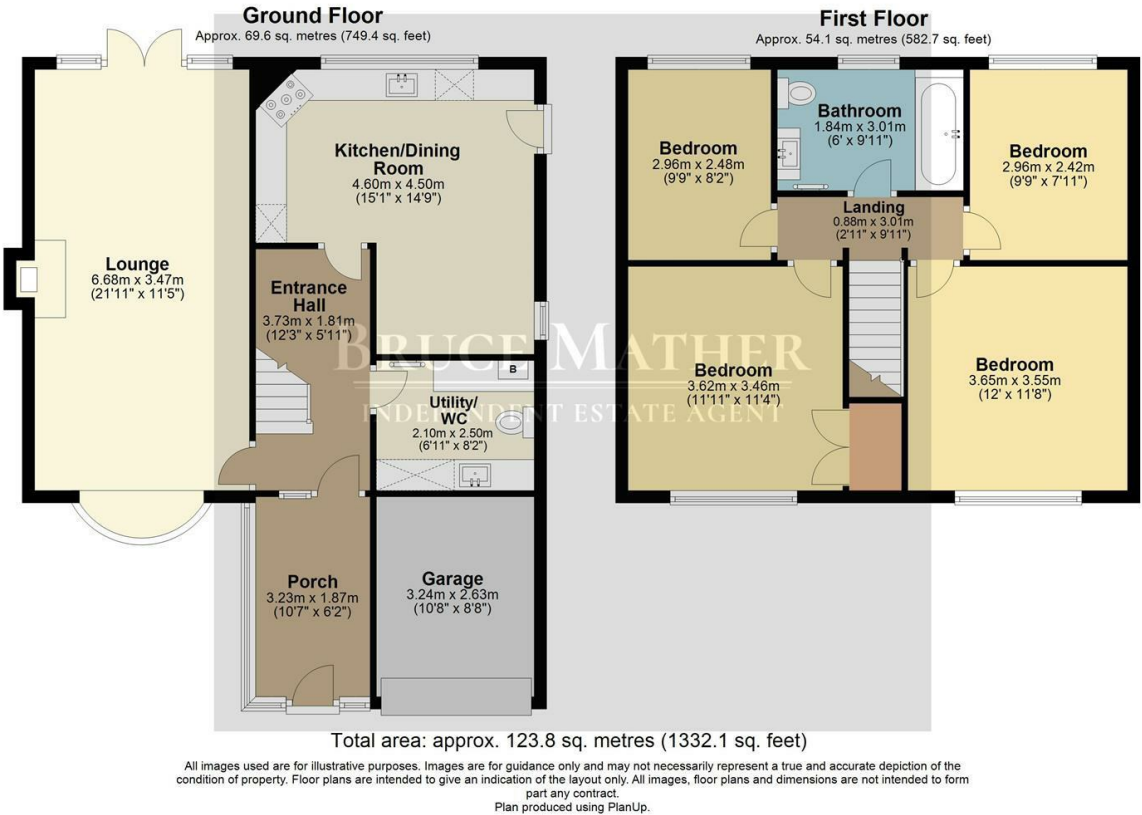




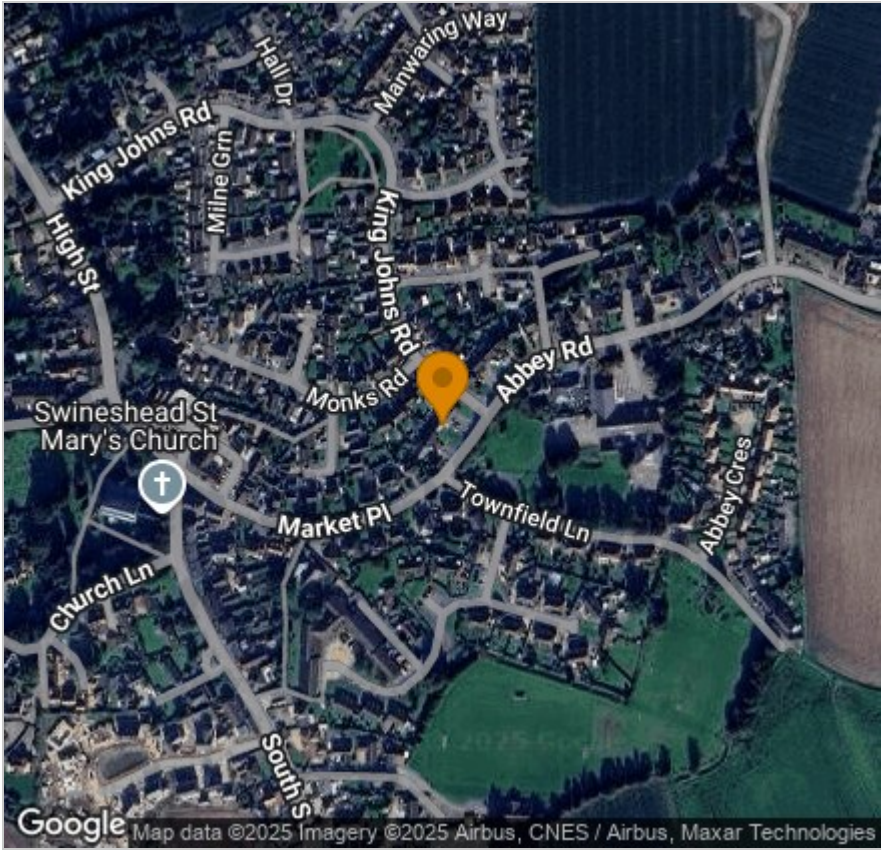




Floor Plan

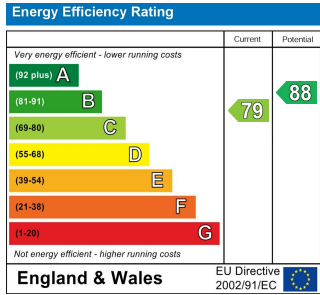


Area Map



Viewing

Please contact our Boston Residential Office on 01205 365032 if you wish to arrange a viewing appointment for this property or require further information.



**BRITISH PROPERTY AWARDS**  
2023  
GOLD WINNER  
ESTATE AGENT IN BOSTON

**BRITISH PROPERTY AWARDS**  
2024  
GOLD WINNER  
ESTATE AGENT IN BOSTON

These particulars, whilst believed to be accurate are set out as a general outline only for guidance and do not constitute any part of an offer or contract. Intending purchasers should not rely on them as statements of representation of fact, but must satisfy themselves by inspection or otherwise as to their accuracy. No person in this firms employment has the authority to make or give any representation or warranty in respect of the property.

6 Pump Square, Boston, Lincs, PE21 6QW  
Tel: 01205 365032 Email: sales@brucemather.co.uk www.brucemather.co.uk

