

BRUCE MATHER

INDEPENDENT ESTATE AGENT

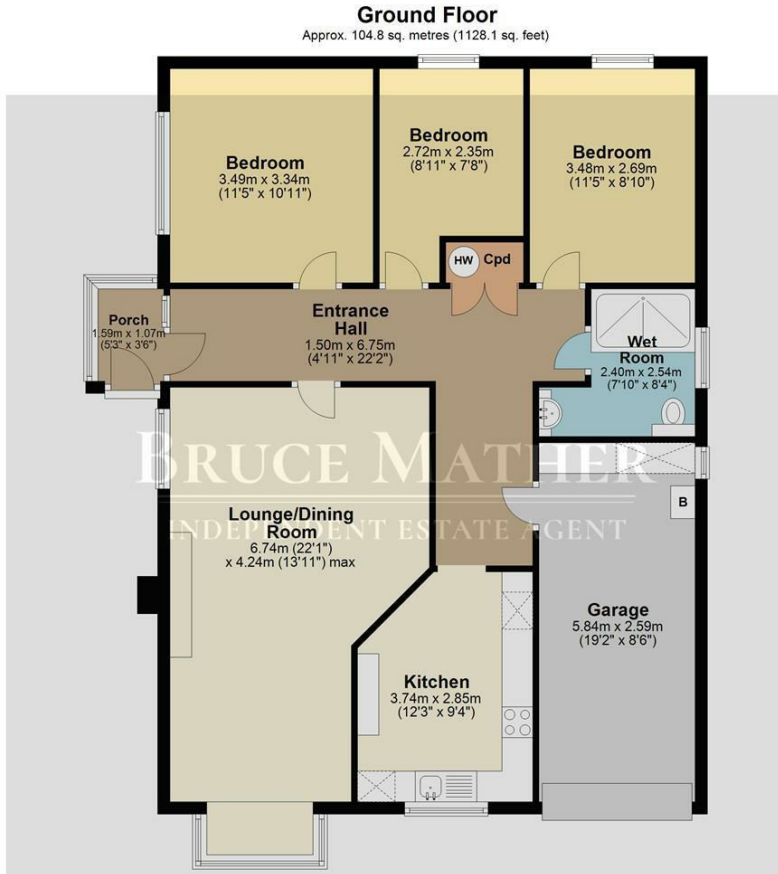


64 Bede Crescent, Boston, PE22 0DZ

£285,000

A very homely detached three bedroom bungalow in a semi rural location 6 miles East of Boston Lincolnshire. This delightful bungalow is in good order and is obviously cared for; upon entering through the porch there are three bedrooms on the left at back of the property, a good sized sitting/dining room with a fireplace, kitchen and a family bath/shower room. With parking and a garage to the front, a well maintained garden on three sides, overlooking fields on one side, with a lovely summer house. Located approximately 6 miles East of Boston for schools, shops and restaurants please call Bruce Mather Estate Agents on 01205365032 to arrange a viewing on this property.

Floor Plan

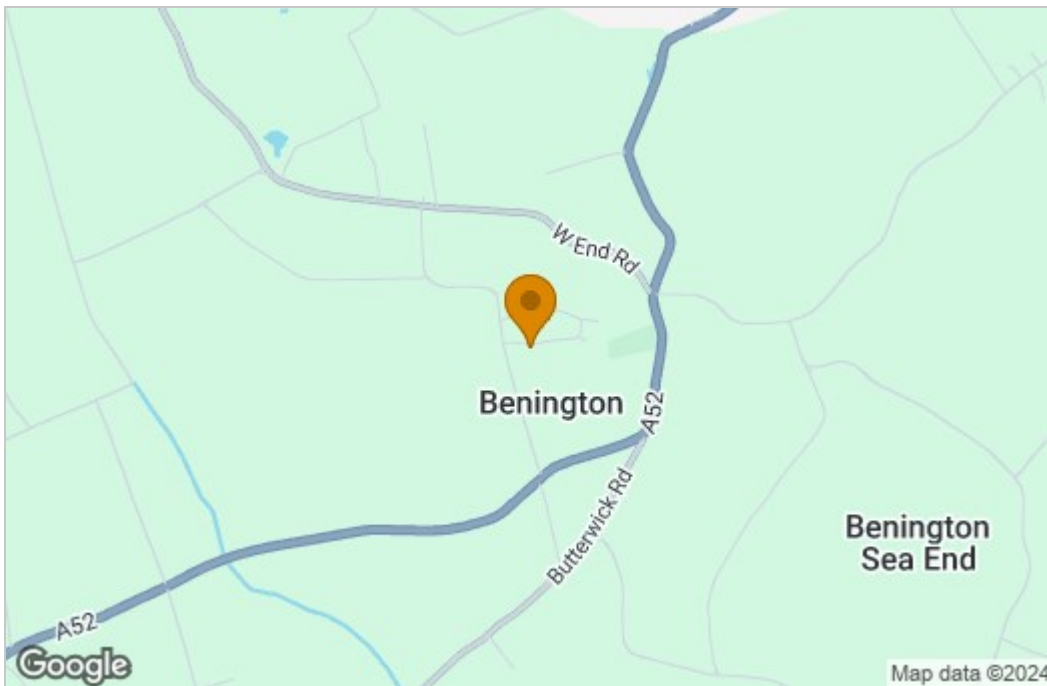


Total area: approx. 104.8 sq. metres (1128.1 sq. feet)

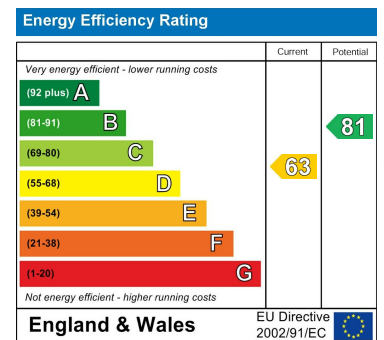
All images used are for illustrative purposes. Images are for guidance only and may not necessarily represent a true and accurate depiction of the condition of property. Floor plans are intended to give an indication of the layout only. All images, floor plans and dimensions are not intended to form part any contract. Plan produced using PlanUp.



Area Map



Energy Efficiency Graph



These particulars, whilst believed to be accurate are set out as a general outline only for guidance and do not constitute any part of an offer or contract. Intending purchasers should not rely on them as statements of representation of fact, but must satisfy themselves by inspection or otherwise as to their accuracy. No person in this firm's employment has the authority to make or give any representation or warranty in respect of the property.

6 Pump Square, Boston, Lincs, PE21 6QW

Tel: 01205 365032 Email: sales@brucemather.co.uk brucemather.co.uk