

BRUCE MATHER

INDEPENDENT ESTATE AGENT

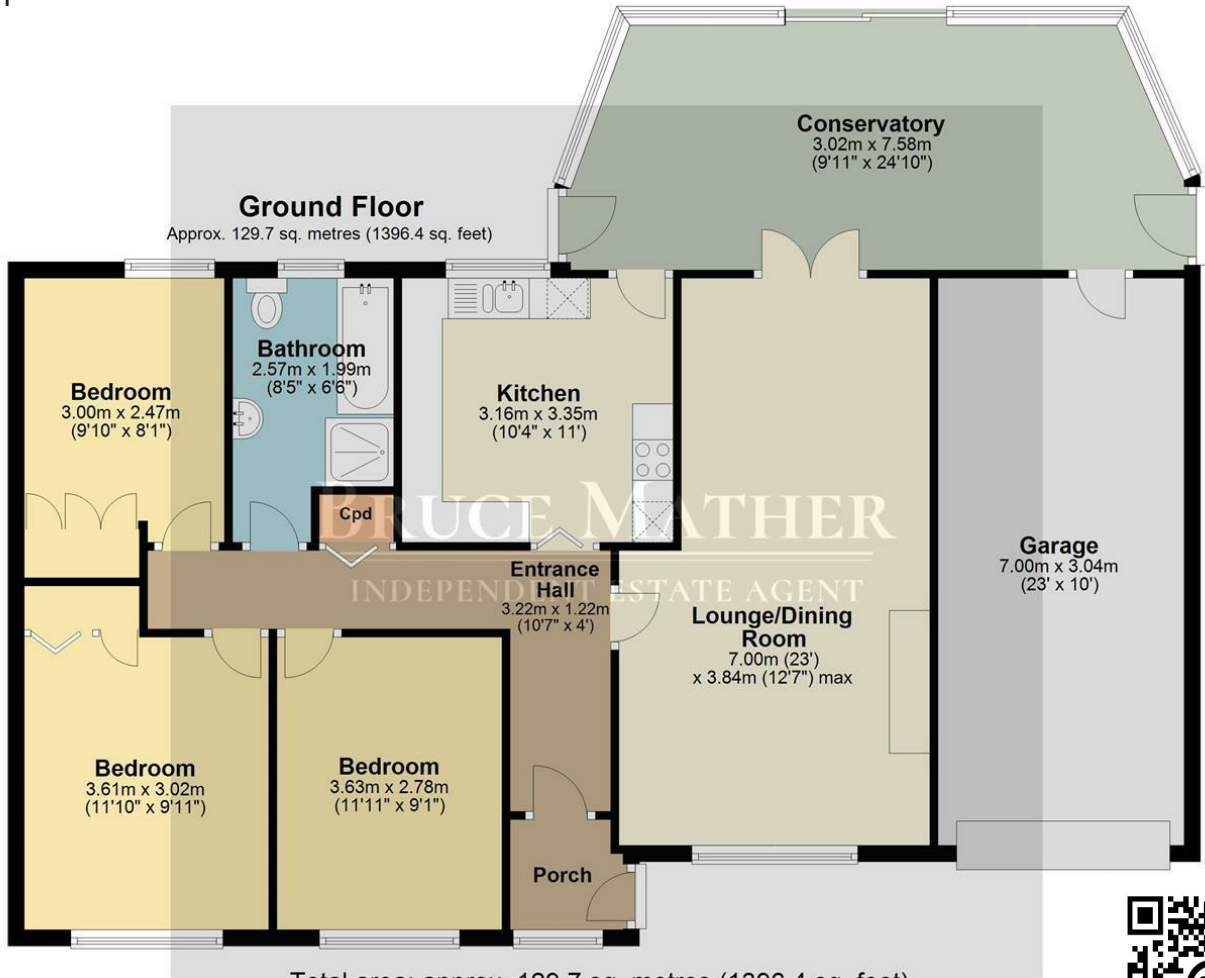


Romar Spilsby Road, Boston, PE22 8JT
Asking Price £249,500

A three-bedroom detached bungalow with a fabulous outlook, attractive garden, in a quiet rural location, New Leake. The accommodation comprises of three bedrooms, a family bathroom with a separate shower, a kitchen leading into the conservatory, a reception room with patio doors and a long garage.

There is parking out front with a lawn with beds, to the rear the attractive garden is isolated and has wonderful views of the fields. Located in New Leake which is more or less an equal distance between Boston and Skegness for shops, schools and services. Please call Bruce Mather to arrange a viewing strictly by appointment only on 01205365032

Floor Plan

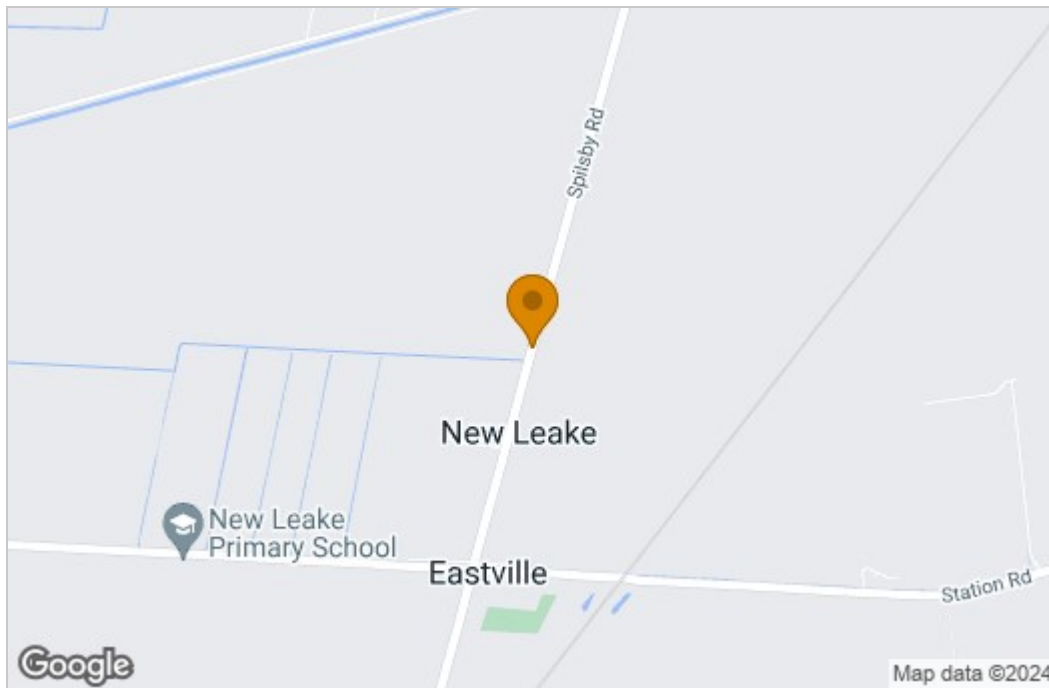


Total area: approx. 129.7 sq. metres (1396.4 sq. feet)

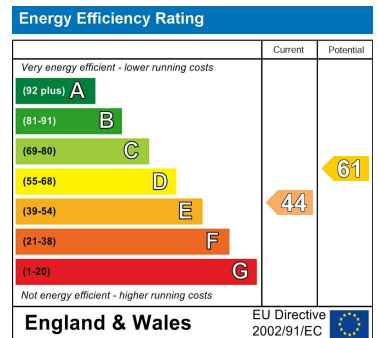
All images used are for illustrative purposes. Images are for guidance only and may not necessarily represent a true and accurate depiction of the condition of property. Floor plans are intended to give an indication of the layout only. All images, floor plans and dimensions are not intended to form part any contract.
Plan produced using PlanUp.



Area Map



Energy Efficiency Graph



These particulars, whilst believed to be accurate are set out as a general outline only for guidance and do not constitute any part of an offer or contract. Intending purchasers should not rely on them as statements of representation of fact, but must satisfy themselves by inspection or otherwise as to their accuracy. No person in this firm's employment has the authority to make or give any representation or warranty in respect of the property.