

BRUCE MATHER
INDEPENDENT ESTATE AGENT



Rosevilla Field Lane
Friskney, Boston, PE22 8RH
Asking Price £475,000



Rosevilla Field Lane

Friskney, Boston, PE22 8RH

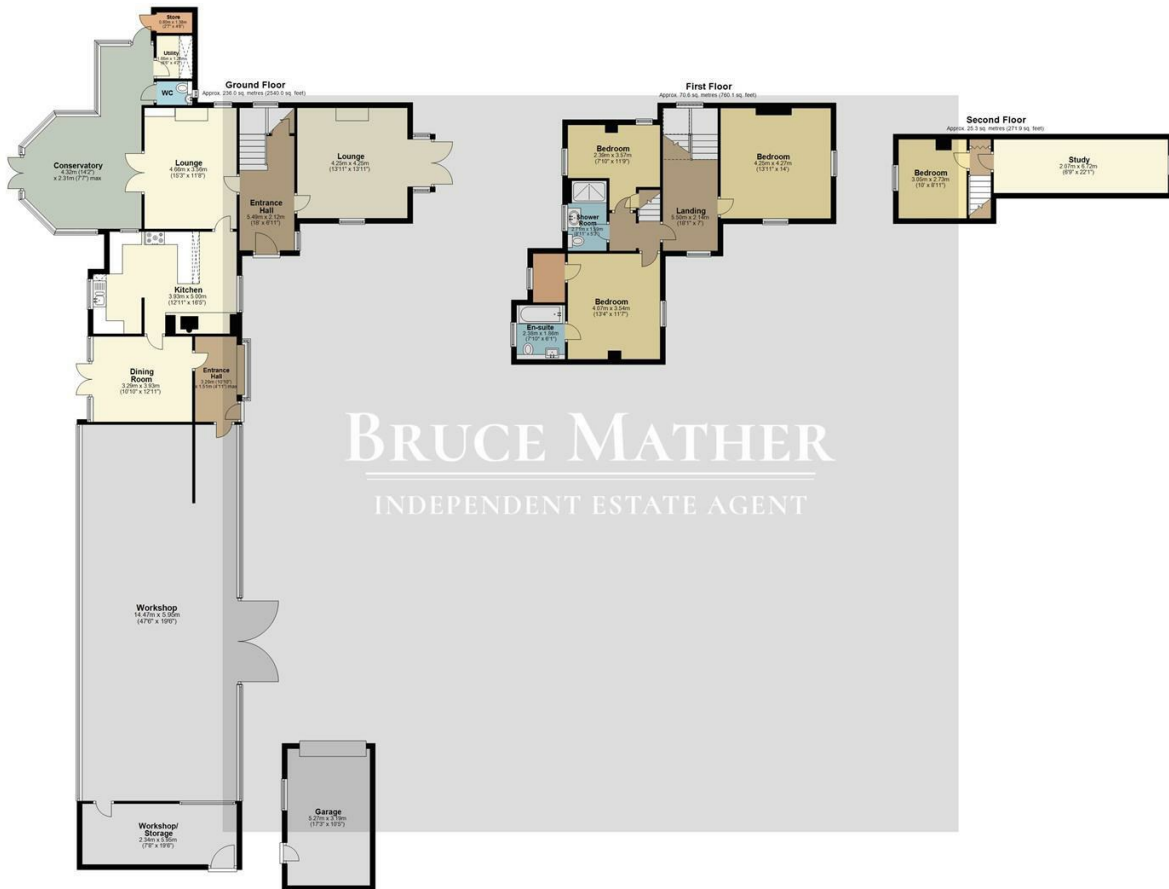
A charming quaint substantial 4 or 5 detached (believed to be early Victorian) house with a large attached barn/workshop, 1 acre paddock (STS) all located in the sleepy village of Friskney. This property boasts three elegant reception rooms and five bedrooms, a kitchen, utility, study, workshop/barn and a good sized conservatory overlooking the pergola and garden features. The garden extends to a lawn area with a gate out to the paddock. Situated on a generous plot, this property provides parking for several vehicles and delightful useable outside space. Whether you're looking for a family home with room to grow or a place to entertain friends, this house on Field Lane offers the perfect blend of space, comfort, and convenience.

Friskney village is quietly nestled near the coast approximately 14 miles to Boston and 9 to Skegness for all you amenities. Please call Bruce Mather to arrange a viewing on this glorious house on 01205365032.





Floor Plan



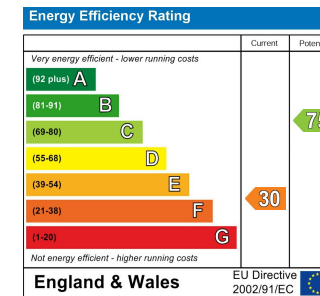
Total area: approx. 331.9 sq. metres (3572.1 sq. feet)

All images used are for illustrative purposes. Images are for guidance only and may not necessarily represent a true and accurate depiction of the condition of property. Floor plans are intended to give an indication of the layout only. All images, floor plans and dimensions are not intended to form part any contract. Plans produced using iFLOOR.

Area Map



Energy Efficiency Graph



Website Link



Viewing

Please contact our Boston Residential Office on 01205 365032 if you wish to arrange a viewing appointment for this property or require further information.

These particulars, whilst believed to be accurate are set out as a general outline only for guidance and do not constitute any part of an offer or contract. Intending purchasers should not rely on them as statements of representation of fact, but must satisfy themselves by inspection or otherwise as to their accuracy. No person in this firm's employment has the authority to make or give any representation or warranty in respect of the property.

6 Pump Square, Boston, Lincs, PE21 6QW

Tel: 01205 360 387 Email: sales@brucemather.co.uk brucemather.co.uk

