

BRUCE MATHER
INDEPENDENT ESTATE AGENT



Main Road
East Heckington, Boston, PE20 3QF
Asking Price £399,950



Main Road

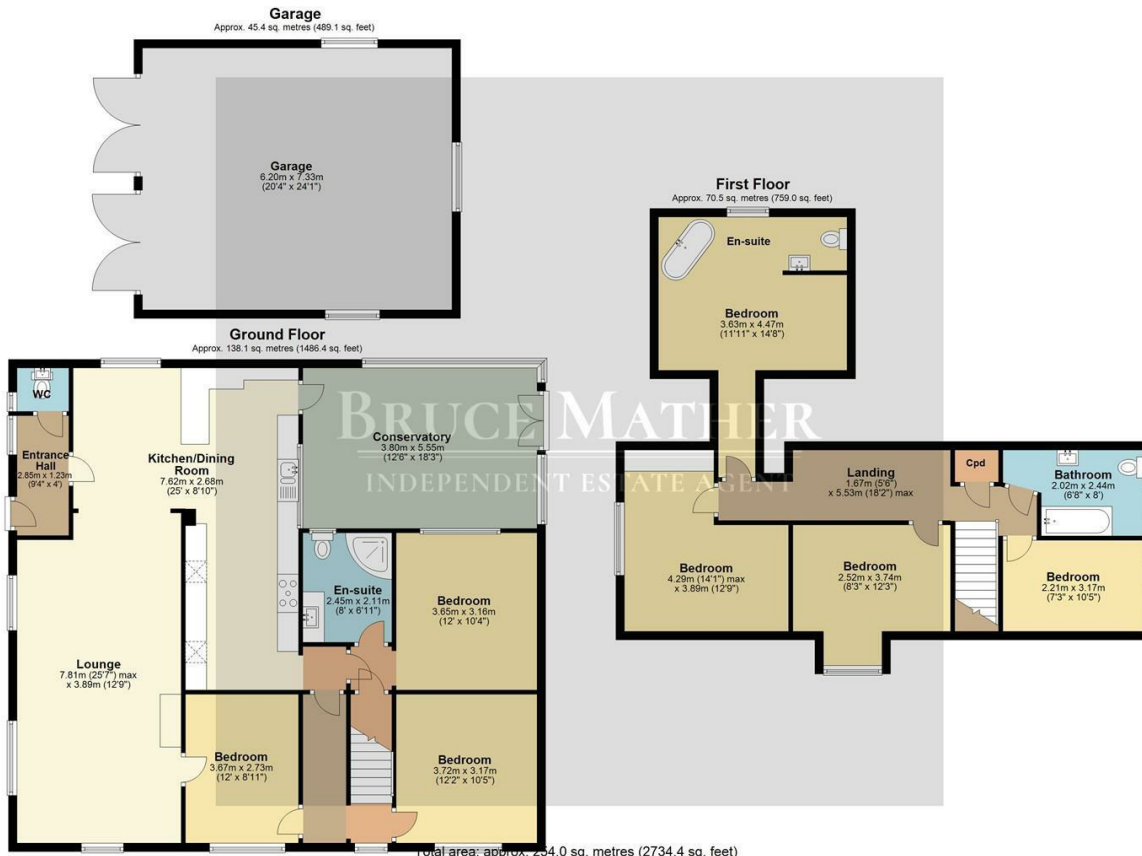
East Heckington, Boston, PE20 3QF

A detached house with up to 7 bedrooms, approximately half an acre (STS), with uninterrupted south facing views and great transport link to A17, East Heckington. The accommodation offers a flexible layout but is currently; 4 bedrooms, two bathrooms the master being ensuite upstairs and a further 3 bedrooms downstairs along with another shower room, newly fitted kitchen diner, reception room, conservatory, and downstairs cloakroom. Outside, the house sits on a large plot which includes a fenced-in large lawn, as well as flower beds and a gravel parking area for several cars, a pergola and a double garage. Located conveniently on the A17 just shy of 10 miles East of Sleaford for your amenities and services.





Floor Plan



All images used are for illustrative purposes. Images are for guidance only and may not necessarily represent a true and accurate depiction of the condition of property. Floor plans are intended to give an indication of the layout only. All images, floor plans and dimensions are not intended to form part any contract. Plan produced using PlanUp.

Viewing

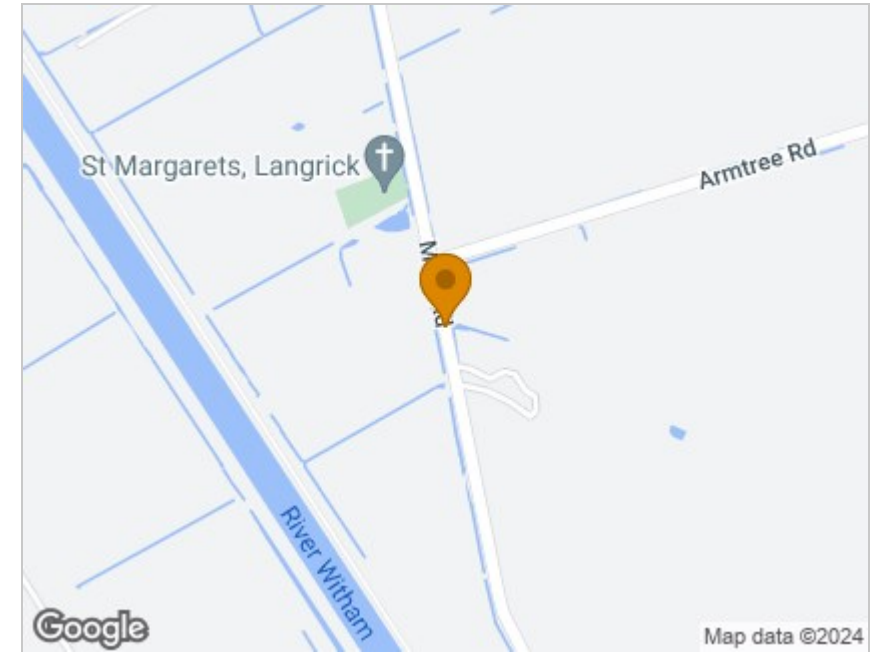
Please contact our Boston Residential Office on 01205 360 387 if you wish to arrange a viewing appointment for this property or require further information.

These particulars, whilst believed to be accurate are set out as a general outline only for guidance and do not constitute any part of an offer or contract. Intending purchasers should not rely on them as statements of representation of fact, but must satisfy themselves by inspection or otherwise as to their accuracy. No person in this firms employment has the authority to make or give any representation or warranty in respect of the property.

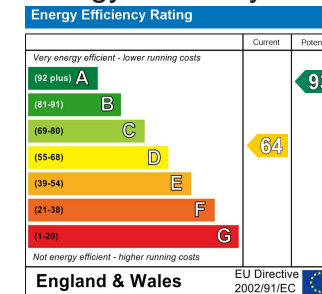
6 Pump Square, Boston, Lincs, PE21 6QW

Tel: 01205 360 387 Email: sales@brucemather.co.uk brucemather.co.uk

Area Map



Energy Efficiency Graph



Website Link

