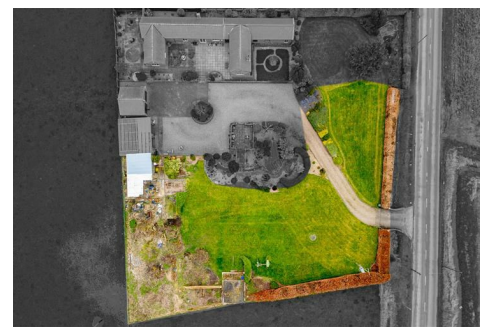


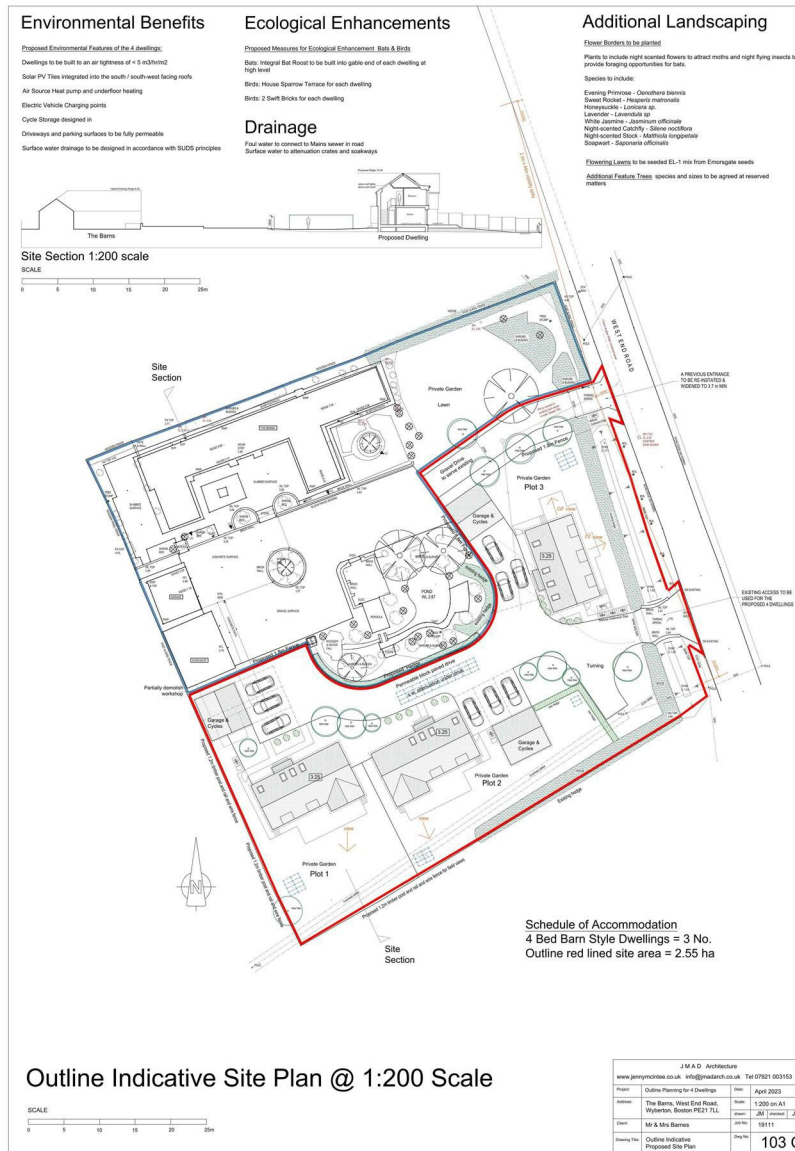
BRUCE MATHER

INDEPENDENT ESTATE AGENT



Three Executive Development Plots, West End Road, Boston, PE21 7LL Asking Price £270,000

Exclusive Plot of Land with outlined Planning Permission for Three Executive Barn-Style Homes set with picturesque countryside views located on the outskirts of Frampton Fen. This exceptional plot of land offers a rare opportunity to create a bespoke residential development of three substantial four bedroom homes, with detached garages. With Outlined planning permission already in place, you can embark on a exciting project that combines rural charm with modern elegance. Located between Frampton Fen and Wyberton, local superstores, schools, transport and amenities are all nearby in Boston.



Area Map



These particulars, whilst believed to be accurate are set out as a general outline only for guidance and do not constitute any part of an offer or contract. Intending purchasers should not rely on them as statements of representation of fact, but must satisfy themselves by inspection or otherwise as to their accuracy. No person in this firm's employment has the authority to make or give any representation or warranty in respect of the property.

6 Pump Square, Boston, Lincs, PE21 6QW
 Tel: 01205 360 387 Email: sales@brucemather.co.uk brucemather.co.uk