

BRUCE MATHER

INDEPENDENT ESTATE AGENT

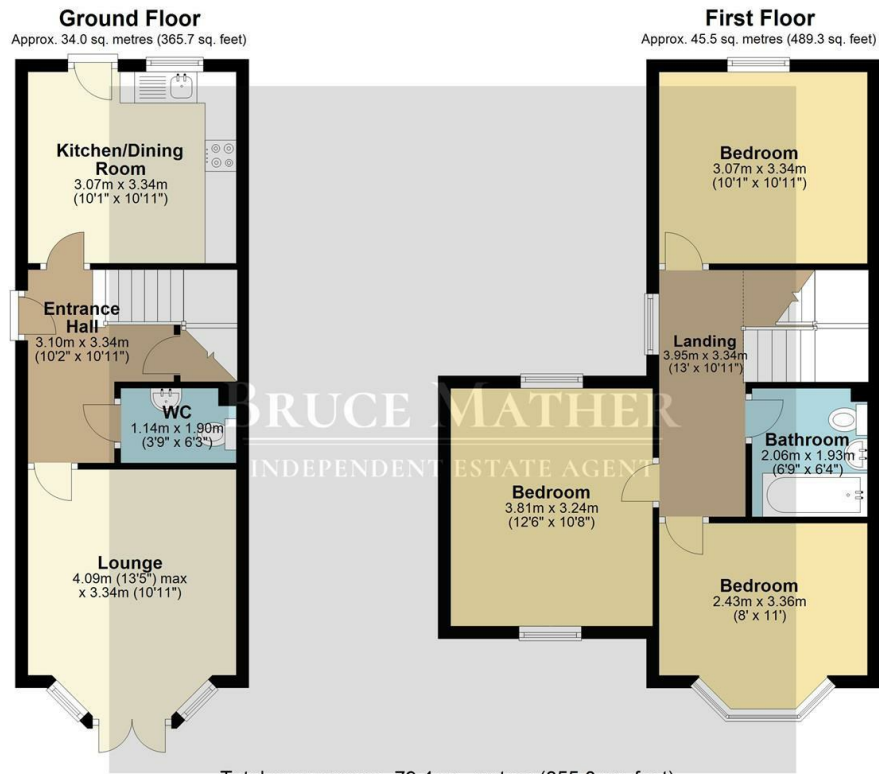


1 Gardner Row, Boston, PE20 1DU Asking Price £149,995

A well presented, three double-bedroom, end-of-terrace house with private parking in the lovely village of Kirton.

Upon entering the kitchen-diner, there are a range of cupboards and a reasonable space to eat, plus a downstairs cloakroom and the reception room to the front with a bay door/window. Upstairs, are three double-bedrooms and a family bathroom. There is a gravel rear garden area which is part-covered, there is space for two cars in the private parking area. This well priced house is sold with NO CHAIN and would make a good rental investment or first-time purchase. Kirton has places to eat, shops, a school and is in easy reach of Boston for all other amenities. Please call Bruce Mather Lincolnshire Estate Agents on 01205 365032 to arrange your viewing today.

Floor Plan

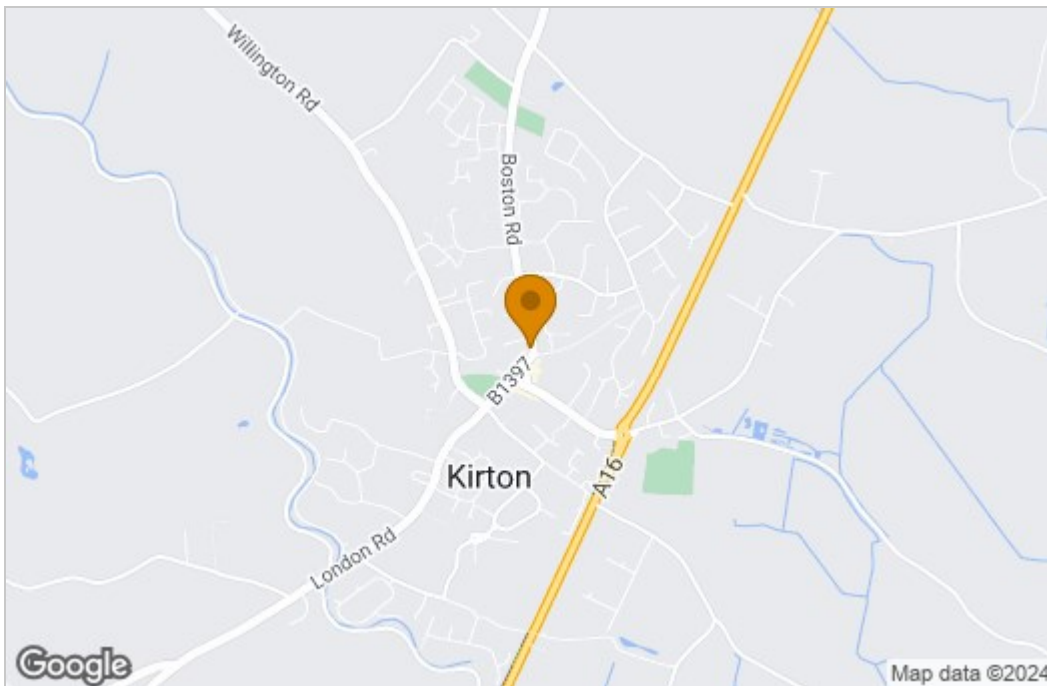


All images used are for illustrative purposes. Images are for guidance only and may not necessarily represent a true and accurate depiction of the condition of property. Floor plans are intended to give an indication of the layout only. All images, floor plans and dimensions are not intended to form part any contract.
Plan produced using PlanUp.

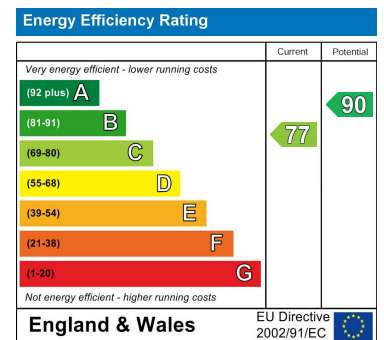
Website Link



Area Map



Energy Efficiency Graph



These particulars, whilst believed to be accurate are set out as a general outline only for guidance and do not constitute any part of an offer or contract. Intending purchasers should not rely on them as statements of representation of fact, but must satisfy themselves by inspection or otherwise as to their accuracy. No person in this firm's employment has the authority to make or give any representation or warranty in respect of the property.