

BRUCE MATHER
INDEPENDENT ESTATE AGENT



Wainfleet Road
, Boston, PE21 9RW

Price Guide £270,000



Wainfleet Road

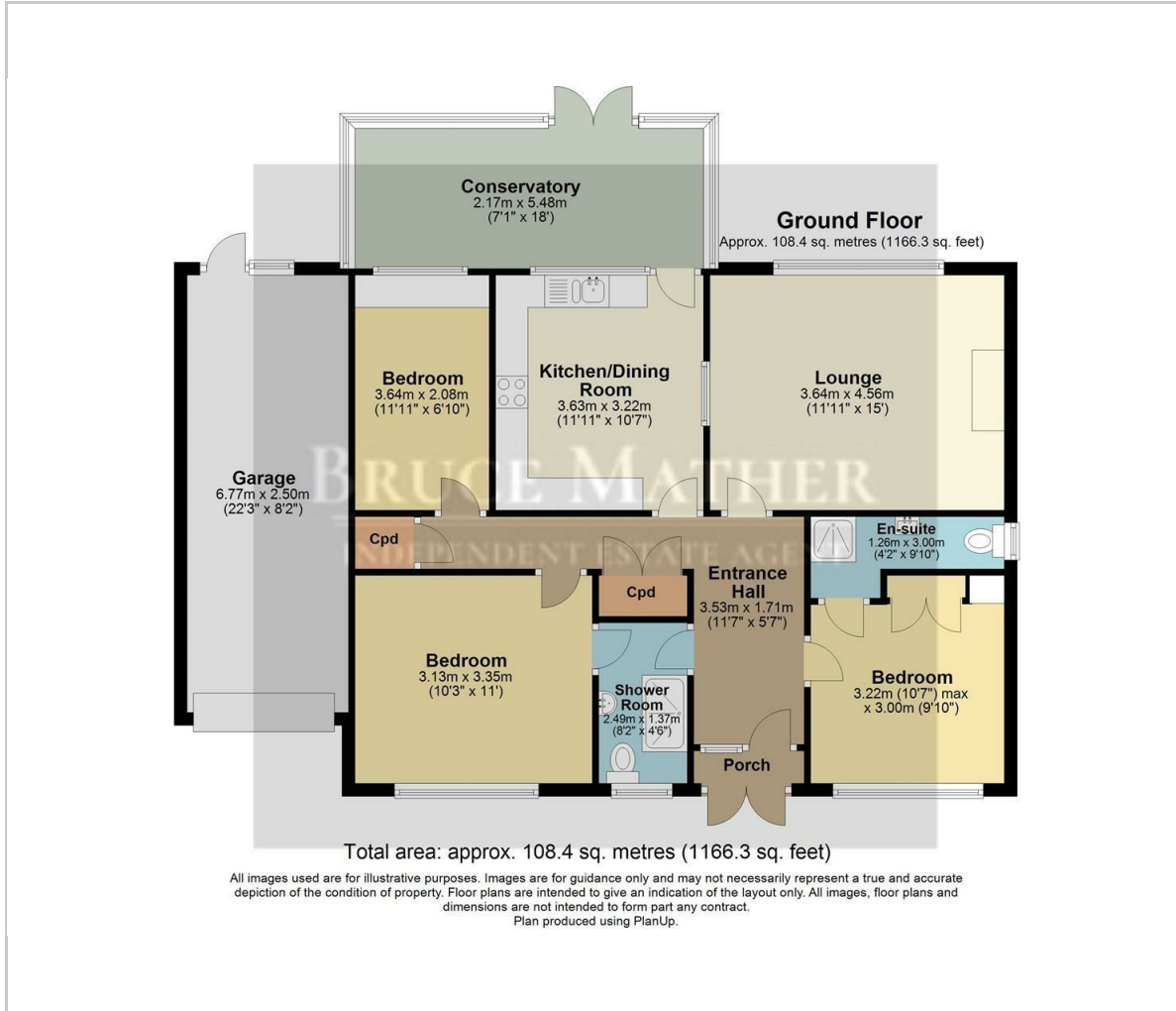
, Boston, PE21 9RW

A charming three bedroom detached bungalow, in good order with a south facing garden, on the outskirts of Boston sold with NO CHAIN. Set well back off the road with a lawn, beds and parking for several cars this cosy bungalow comprises of three bedrooms and two bathrooms which are also en-suite, a bright kitchen which leads out to conservatory and beyond to the garden, and finally a sitting room. There is a good sized garage down one side and to the rear is a manageable contained south facing garden which has a mix of a patio area, lawn and beds. Located right on the outskirts of Boston, where you can find schools, shops and local amenities. Please call Bruce Mather Estate Agents on 01205 365032 to arrange a viewing.





Floor Plan



Viewing

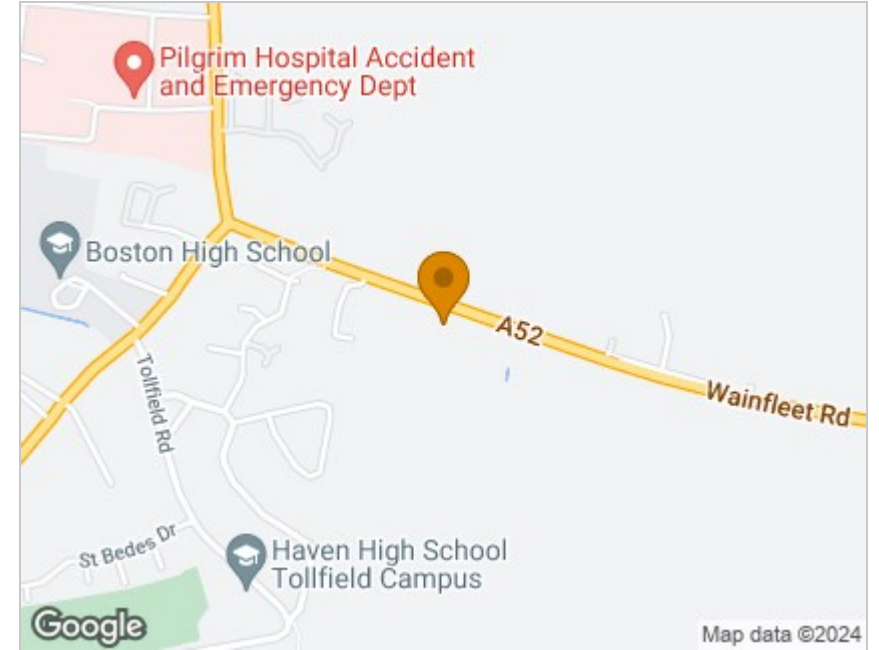
Please contact our Boston Residential Office on 01205 360 387 if you wish to arrange a viewing appointment for this property or require further information.

These particulars, whilst believed to be accurate are set out as a general outline only for guidance and do not constitute any part of an offer or contract. Intending purchasers should not rely on them as statements of representation of fact, but must satisfy themselves by inspection or otherwise as to their accuracy. No person in this firm's employment has the authority to make or give any representation or warranty in respect of the property.

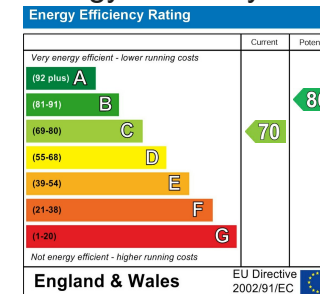
6 Pump Square, Boston, Lincs, PE21 6QW

Tel: 01205 360 387 Email: sales@brucemather.co.uk brucemather.co.uk

Area Map



Energy Efficiency Graph



Website Link

