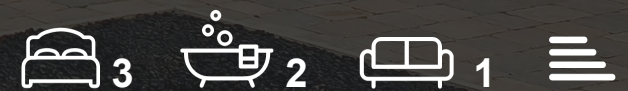


BRUCE MATHER
INDEPENDENT ESTATE AGENT



9 Sherridans Way
Sutterton, Boston, PE20 2EE

£375,000



9 Sherridans Way

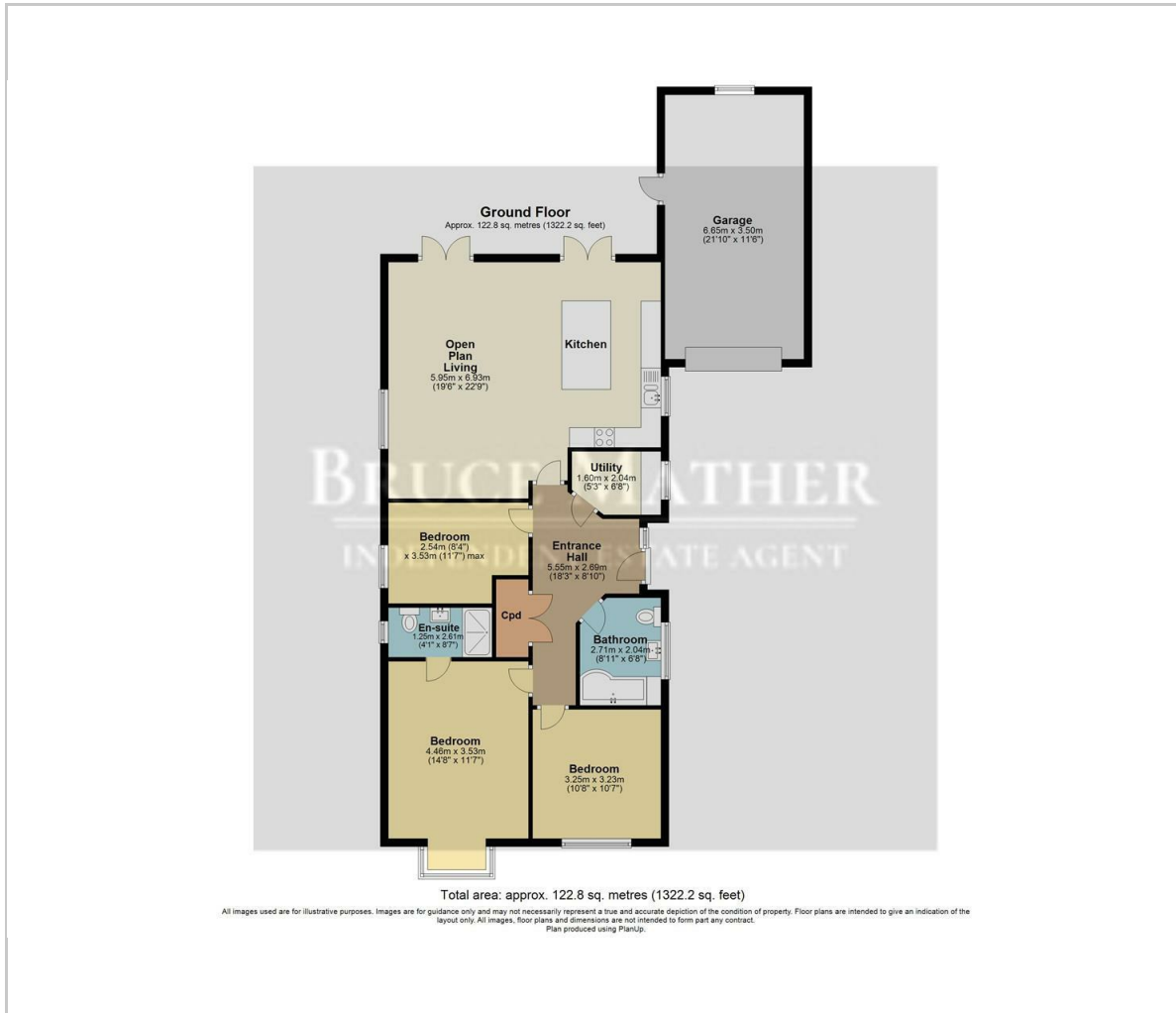
Sutterton, Boston, PE20 2EE

A private, BRAND NEW, modern three-bedroom bungalow on the edge of Sutterton. This wonderful new build has three double bedrooms, two bathrooms - one being ensuite. A stunning open plan kitchen diner (with an island) family/reception room which has high ceilings and leads to the garden through patio doors. The bungalow has underfloor heating and air sourced heat pump. This exciting new build comes with a garage and parking spaces as well as a lawned fenced in garden. Sutterton lies approximately six miles south-west of Boston and has a post office/general store, a popular pub, fish-and-chip shop, garden centre, doctors' surgery, and a village hall.





Floor Plan



Viewing

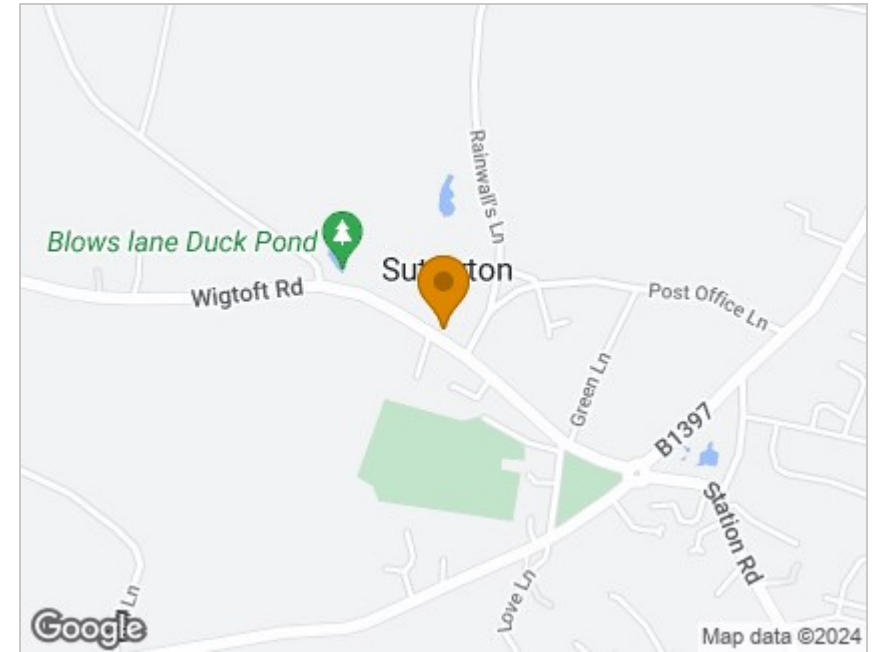
Please contact our Boston Residential Office on 01205 360 387 if you wish to arrange a viewing appointment for this property or require further information.

These particulars, whilst believed to be accurate are set out as a general outline only for guidance and do not constitute any part of an offer or contract. Intending purchasers should not rely on them as statements of representation of fact, but must satisfy themselves by inspection or otherwise as to their accuracy. No person in this firms employment has the authority to make or give any representation or warranty in respect of the property.

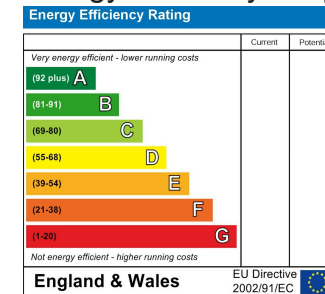
6 Pump Square, Boston, Lincs, PE21 6QW

Tel: 01205 360 387 Email: sales@brucemather.co.uk brucemather.co.uk

Area Map



Energy Efficiency Graph



Website Link

